

Transition to a 1.5°C World with the S&P PACT™ Indices (S&P Paris-Aligned & Climate Transition Indices)

Contributors

Mona Naqvi

Senior Director, Head of
ESG Product Strategy

North America

mona.naqvi@spglobal.com

Ben Leale-Green

Analyst, Research & Design
ESG Indices

[ben.leale-green@](mailto:ben.leale-green@spglobal.com)

[spglobal.com](mailto:ben.leale-green@spglobal.com)

The landmark Paris Agreement marked a sea change in the global fight against climate change.¹ Backed by empirical evidence from the UN Intergovernmental Panel on Climate Change (IPCC), ambition has since grown to limit global temperature rise to 1.5°C since pre-industrial levels.

To date, climate-conscious investors have largely focused on reducing relative portfolio carbon exposure, but divergent methodologies have made fertile ground for so-called “greenwashing.” While point-in-time analyses do not necessarily inform alignment with our needed transition to a low-carbon economy. However, a combination of groundbreaking new datasets and index innovation is emerging. Investors now have the choice to align with a scenario that may mitigate the most catastrophic impacts. The European Union (EU) is in the process of finalizing standards for defining a Climate-Transition Benchmark (CTB) and a Paris-aligned Benchmark (PAB), both of which use absolute measures to align with a 1.5°C trajectory rather than simply a relative carbon reduction.² Our S&P PACT Indices offer a powerful set of investment solutions to meet the proposed standards, in addition to other climate objectives. This new breed of sustainable climate indices therefore provides a pathway for investors to:

1. Go beyond the Paris Agreement and align investments with a 1.5°C trajectory toward achieving net-zero emissions by 2050;
2. Adopt a strategy compliant with the proposed standards for the EU CTBs and PABs and recommendations from the TCFD—accounting for the physical risks, transition risks, and opportunities arising from climate change; and
3. Address numerous climate objectives efficiently, while staying as close to the underlying index as possible with broad, diversified exposure.

¹ The Paris Agreement is an international treaty, sponsored by the UN Framework Convention on Climate Change (UNFCCC), to keep the increase in global average temperature rise to “well below 2°C above pre-industrial levels” that went into effect in November 2016.

² In December 2018, the EU enacted a law creating two new climate benchmarks via amendment EU 2019/2089. In September 2019, an EU-appointed Technical Expert Group (TEG) proposed minimum standards for these benchmarks in its [final report](#), which will be used by the EU to prepare and publish the final delegated acts, expected sometime in 2020.

This paper underscores how the S&P PACT Indices could help investors transition to a 1.5°C world and achieve other climate objectives.

Many are committed to reducing GHG emissions...

A SCIENCE-BASED APPROACH: THE IMPORTANCE OF CLIMATE TRANSITION

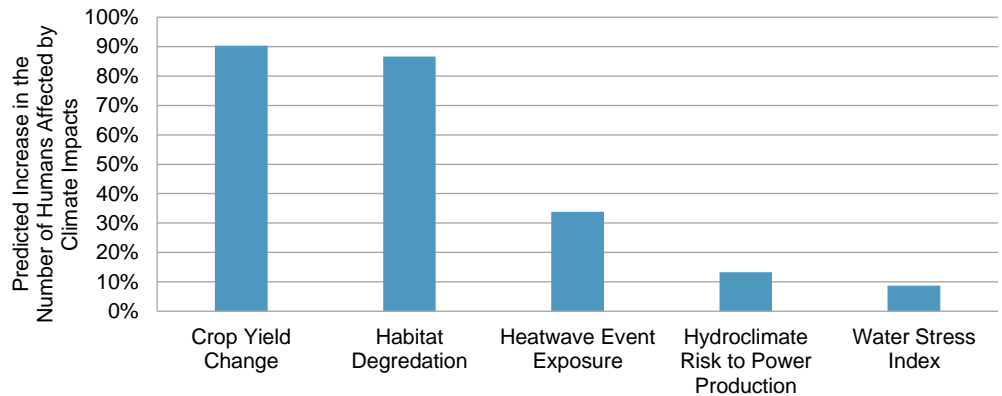
Few climate scientists would dispute the Earth’s climate is rapidly warming due to human activity, with potentially catastrophic impacts.³ Many are therefore committed to reducing greenhouse gas (GHG) emissions, and the goal is now not only the well below 2°C target of the Paris Agreement, but less than 1.5°C of warming since pre-industrial levels.⁴ Indeed, climate models reveal an ominous non-linear relationship between GHG emissions and several climate tipping points, which could set off dramatic and irreversible effects. For example, just 1-3°C of warming could melt the entire Greenland ice sheet, triggering a reversal in Atlantic Ocean currents, amounting to sea-level rise, heat accumulation in the Southern Ocean and, ultimately, further ice loss from the East Antarctic ice sheet.⁵ At higher levels of global warming, we would see even more severe consequences of this nature.⁶

...and the goal is now not only the well below 2°C target of the Paris Agreement...

The human implications of these complex and unprecedented interactions are potentially disastrous. With a rise of 2°C, significantly more people will likely face reduced crop yields, habitat degradation, heatwave exposure, hydro-climate risk to power production, and water stress than with 1.5°C of warming (see Exhibit 1). It seems that just an additional 0.5°C of warming between these two scenarios could have exponentially more devastating human consequences, let alone at higher warming scenarios.

Exhibit 1: Predicted Increase in the Human Impacts of Global Warming between a 2°C and 1.5°C Scenario

...but less than 1.5°C of warming since pre-industrial levels.



³ Numerous publications in peer-reviewed scientific journals highlight that more than 97% of climate scientists believe the earth’s climate is rapidly warming due to human activity. <https://iopscience.iop.org/article/10.1088/1748-9326/11/4/048002>.

⁴ Since the IPCC released its special report, *Global Warming of 1.5°C* (Masson-Delmotte et al., 2018), there has been growing interest in meeting the more ambitious 1.5° target than the commitments of the Paris Agreement focused on well below 2°C.

⁵ Keenan et al. 2016; Mengel and Levermann. 2014; Armour et al. 2016.

⁶ Steffen et al. 2018.

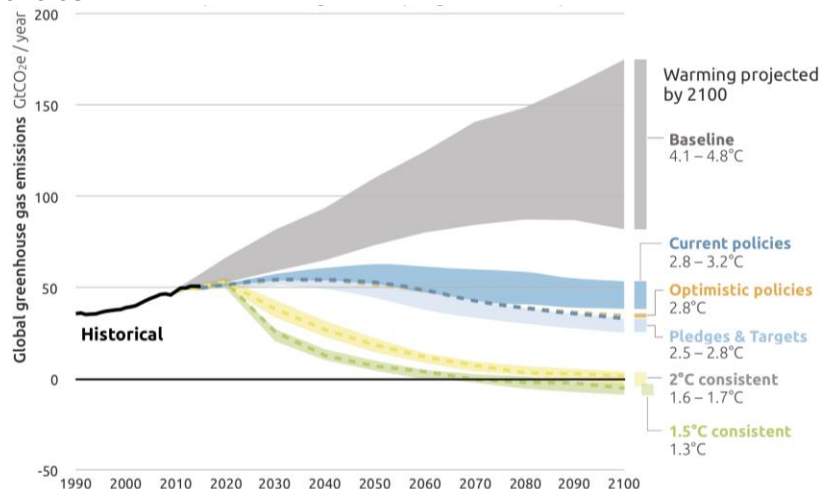
Source: IOP Science, as shown in Byers et al, 2018. Data as of May 2018. Chart is provided for illustrative purposes.

In January 2020, global land and ocean surface temperature was recorded at its highest level in 141 years, at 1.14°C above the 20th century average (NOAA National Centers for Environmental Information, 2020). However, snap assessments like these do not paint a complete picture, given the non-linear complexities of the climate system. Thus, it begs the question, **what trajectory are we on and is it aligned with a 1.5°C scenario?**

Just an additional 0.5°C of warming between the 1.5°C and 2°C scenarios could have exponentially more devastating human consequences.

In the absence of corrective action, global warming is expected to reach 4.1°C-4.8°C above pre-industrial levels by the end of this century.⁷ Under current policies, moderate estimates suggest that we are still likely to emit more than double the levels required to achieve a 1.5°C scenario by 2030 (see Exhibit 2). Ultimately, the answer will depend on the behavior of governments, policymakers, and market participants alike to transform the status quo and radically transition to a lower-carbon economy. From an investor’s perspective, this includes decisions on how and where to allocate their capital—as well as the benchmarks used to evaluate their investment performance.

Exhibit 2: Emissions and Warming Predictions Based on Current Pledges and Policies



In January 2020, global land and ocean surface temperature was recorded at its highest level in 141 years, at 1.14°C above the 20th century average...

Source: [Climate Action Tracker](#). Data as of December 2019. Chart is provided for illustrative purposes.

DEFINING STANDARDS FOR THE LOW-CARBON TRANSITION

EU Paris-Aligned and Climate Transition Benchmarks

In March 2018, the European Commission published its action plan⁸ to reorient capital flows toward investment for “sustainable and inclusive growth.” Key to this will be increased private sector environmental and

...which begs the question: what trajectory are we on and is it aligned with a 1.5°C scenario?

⁷ Temperatures | Climate Action Tracker, 2019

⁸ https://ec.europa.eu/info/publications/180308-action-plan-sustainable-growth_en

To increase private sector environmental expenditure, the EU is introducing the Climate Transition Benchmarks (CTBs) and Paris-aligned Benchmarks (PABs)...

climate-related expenditure. To this end, the EU is in the process of introducing minimum standards for two new climate benchmark labels to align investments with a 1.5°C trajectory and prevent climate index greenwashing. Specifically, these are the Climate Transition Benchmarks (CTBs) and Paris-aligned Benchmarks (PABs), both of which use absolute measures of becoming 1.5°C scenario compatible rather than simply a relative carbon reduction.

To ensure the labels are reliable and easy to recognize, only administrators that comply with the regulatory requirements can use them when marketing climate benchmarks in the EU. Exhibit 3 summarizes the current proposed minimum standards from the EU-appointed TEG’s final report for each of these new labels.⁹

...which use absolute measures of being 1.5°C scenario compatible rather than simply relative carbon reductive.

MINIMUM STANDARDS	CTB	PAB
Minimum Scopes 1, 2, and (3) GHG Emission Intensity Reduction Compared with the Underlying Benchmark	30%	50%
Scope 3 Phase-in Period	Up to four years	
Baseline Exclusions	Controversial weapons and societal norm violators	
Activity Exclusions	None	<ul style="list-style-type: none"> • Coal (≥ 1% revenues) • Oil (≥ 10% revenues) • Natural gas (≥ 50% revenues) • Electricity producers with lifecycle GHG emissions higher than 100 gCO2e/kWh (≥ 50% revenues)
Year-on-Year Self-Decarbonization of the Benchmark	At least 7% on average per year: in line with or beyond the decarbonization trajectory from the IPCC’s 1.5°C scenario (with no or limited overshoot)	
Minimum Green Share/Brown Share Ratio Relative Compared with Investable Universe (Voluntary)	At least equivalent	Significantly larger (factor 4)
Exposure Constraints	Minimum exposure to sectors highly exposed to climate issues is at least equal to equity market benchmark value.	
Corporate Target Setting	Weight increases considered for companies that set evidence-based targets under strict conditions to avoid greenwashing	
Immediate Disqualification	If misaligned with trajectory for two consecutive years	

Source: S&P Dow Jones Indices LLC, The EU Technical Expert Group on Sustainable Finance. Table is provided for illustrative purposes.

To ensure the EU CTB and PAB labels are reliable and easy to recognize...

The Task Force on Climate-related Financial Disclosures (TCFD)

Beyond the EU, global initiatives such as the G20’s Task Force on Climate-related Financial Disclosures (TCFD) have also sought to enhance market transparency on climate risks and opportunities to support sustainable investment. The TCFD’s final report¹⁰ gave recommendations for corporate and investor climate disclosure and underscored the importance of

...only administrators that comply with the regulatory requirements can use them when marketing climate benchmarks in the EU.

⁹ Please note that the EU is in the process of finalizing the minimum standards for CTBs and PABs, and these are subject to change. Any changes to the EU-delegated acts will be taken into consideration and potentially reflected in a revised methodology for the S&P PACT Indices.

¹⁰ <https://www.fsb-tcdf.org/wp-content/uploads/2017/06/FINAL-2017-TCFD-Report-11052018.pdf>

reporting on the financial impacts of climate-related risks and opportunities—comprising both transition and physical climate risks (see Exhibit 4).

The TCFD also gave recommendations for climate disclosure, underscoring the importance of reporting on the financial impacts of transition and physical climate risks.

Physical climate risks include more frequent and severe extreme weather events such as storms, hurricanes, and floods (acute impacts), as well as shifts in long-term weather patterns and sea-level rise (chronic impacts). Physical risk thereby threatens companies potentially facing asset write-downs, disruptions in supply chains, and costly insurance premiums for high-risk locations.

Transition risk, on the other hand, refers to the costs associated with the policy, legal, technological, and reputational risks from adapting to climate change. For example, if policymakers attempt to curb emissions with carbon taxes and emission trading schemes, certain companies may face higher operating costs that they may not be able to pass on. These might encourage them to substitute products or technologies for low-carbon alternatives that could create technological risk if assets are retired early. Meanwhile, shifts in consumer preferences and reputational damage to companies that are slow to adapt to a transition might erode brand value and ultimately decrease revenues. However, a transition to a low-carbon economy will likely create both winners and losers. A successful transition is expected to require about USD 1 trillion of investment each year in gainful areas such as low-carbon energy, resource efficiency, and sustainable products.¹¹

Physical climate risks include more frequent extreme weather events, as well as shifts in long-term weather patterns and sea-level rise.

Exhibit 4: TCFD Approach to Climate-related Risks and Opportunities



Source: TCFD final report (2017:8). Chart is provided for illustrative purposes.

Transition risk refers to the costs associated with policy, legal, technology, and reputation from adapting to climate change.

Transition and physical climate risks are not a priori connected. As the science points out, failure to transition to a low-carbon economy would increase the likelihood and severity of physical risks. While failure to mitigate physical risks would seem to suggest the market is not adequately transitioning. Even under a 1.5°C scenario, physical climate risks will likely occur more frequently and cause more damage than they do now. Neglecting both types could result in less climate risk mitigation than a standard market-cap-weighted index. A holistic, climate-aligned strategy,

¹¹ TCFD final report (June 2017), Executive Summary, Page ii. <https://www.fsb-tcfid.org/wp-content/uploads/2017/06/FINAL-2017-TCFD-Report-11052018.pdf>.

incorporating TCFD recommendations, must therefore address types of climate risk, as well as the opportunities arising from climate change.

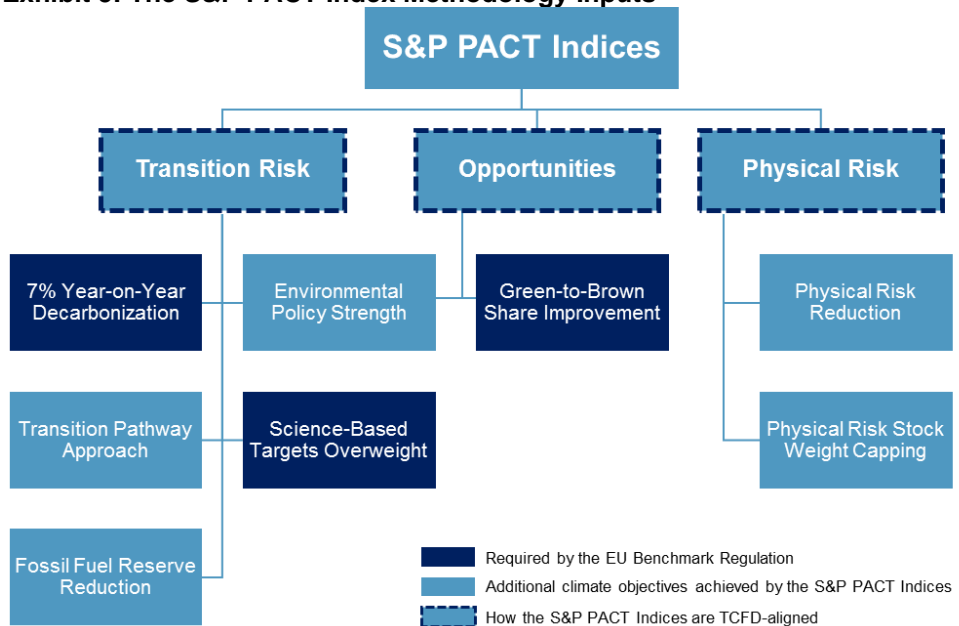
To align with the EU CTBs and PABs, S&P DJI has launched the S&P Paris-Aligned and Climate Transition Indices.

INTRODUCING THE S&P PACT INDICES

To meet the EU’s proposed minimum standards for CTBs and PABs, we have launched two new index series: the S&P Paris-Aligned Climate (PA) Indices and S&P Climate Transition (CT) Indices, respectively, collectively referred to as S&P PACT: the S&P Paris-Aligned & Climate Transition Indices. Both methodologies meet the respective EU requirements¹² and other climate objectives to become compatible with a 1.5°C scenario and recommendations from the TCFD (see Exhibit 5).

Exhibit 5: The S&P PACT Index Methodology Inputs

They meet the respective EU requirements and additional climate objectives to become compatible with a 1.5°C scenario and TCFD recommendations.



Source: S&P Dow Jones Indices LLC. Chart is provided for illustrative purposes.

Historically, they achieve these objectives without sacrificing performance.

The S&P PACT Indices’ Methodology is rooted in transition risks, physical risks, and the opportunities from climate change, as recommended by the TCFD. This, in addition to the inclusion of several other climate objectives, means the methodology goes beyond the EU’s proposed minimum standards to provide an even more robust and holistic investment solution for transitioning to a 1.5°C world. It achieves all of these objectives simultaneously, through an optimization that minimizes deviations from the underlying index, which has historically resulted in a broad and diversified index with similar performance to the benchmark. The various climate objectives included as inputs into the methodology are as follows.

¹² The S&P PACT Indices meet the proposed minimum standards for the EU CTBs and PABs based on the final report published by the EU TEG. The EU is in the process of finalizing the minimum standards, and therefore, these are subject to change.

1) Climate Objectives Required by the EU's Proposed Minimum Standards

- Reduce the GHG emissions intensity of the index at 7% year-on-year, to align with carbon neutrality by 2050, using scopes 1, 2, and 3 emissions for each company from inception.¹³
- Overweight companies with publicly disclosed science-based targets that meet certain thresholds as defined by the EU.
- Improve or maintain green-to-brown revenue share. For the S&P PA Index, increase the green-to-brown share of the index by a factor of 4; for the S&P CT Index, prevent any worsening of the green-to-brown share relative to the underlying index.

The S&P PACT Indices Methodology is rooted in transition risks, physical risks, and the opportunities from climate change...

2) Additional Climate Objectives Included for a More Holistic Approach

- Incorporate transition pathway models, recommended by the Science Based Targets initiative (SBTi), to assign companies with individual carbon budgets compatible with a 1.5°C trajectory. Ensure the weighted average budget, per dollar invested, is below zero at rebalance to give 1.5°C compatibility on a forward-looking basis.
- Decrease or maintain fossil fuel reserve exposure to limit the potential risk posed by stranded assets.
- Improve or maintain environmental policy strength, measured by the S&P DJI Environmental Score. For the S&P PA Index, increase exposure to companies with superior policies arguably better positioned for the low-carbon transition; for the S&P CT Index, prevent any worsening of environmental policy strength.
- Dynamically cap individual company risk exposure to physical risks to mitigate tail risk from acute climate hazards (e.g., storms and floods).
- Reduce or maintain the weighted average physical climate risk exposure of the index to mitigate long-term effects of chronic physical risks (e.g., sea-level rise).

...meaning it goes beyond the EU's proposed minimum standards to provide an even more robust investment solution.

¹³ The GHG Protocol classifies a company's GHG emissions into three scopes. Scope 1 emissions are direct emissions from owned or controlled sources. Scope 2 emissions are indirect emissions from the generation of purchased energy. Scope 3 emissions are all indirect emissions (not included in scope 2) that occur in the company's value chain—including both upstream and downstream emissions. The EU benchmark regulation only requires Scope 3 emissions to be phased in within four years, but the S&P PACT Index Methodology incorporates all GHG scopes 1, 2, and 3 from inception.

HOW THE S&P PACT INDICES GO BEYOND THE PARIS AGREEMENT AND HELP ALIGN INVESTMENTS WITH THE 1.5°C CLIMATE GOAL

A Transition Pathway Approach

The S&P PACT Indices use Trucost data and models to assess constituents' GHG emissions as compared to the 1.5°C scenario compatible budget.

The S&P PACT Indices use forward-looking data and models from Trucost, part of S&P Global, to assess the GHG emissions of each constituent and their GHG emissions compared with a 1.5°C scenario compatible budget. These budgets may be set in two ways—both of which were developed by leading academics¹⁴ and are supported by the SBTi.

The budgets reflect a company's share of the required decarbonization rate for the world to transition to a 1.5°C scenario.

The budgets reflect a company's share of the required decarbonization rate for the world to transition to a 1.5°C scenario from each company's base-year emissions. For example, if all nations were to cut their GHG emissions per unit of GDP by 5% per year, global GHG emissions would be 50% lower in 2050 than in 2010, so long as the economy continues to grow at its historical rate of 3.5% per year.¹⁵ As such, this suggested 5% year-on-year reduction may be translated into individual company budgets based on their GHG emissions per unit of value-added (gross profit) to the global economy, otherwise known as the GEVA approach.¹⁶ This approach is used when companies have diverse business activities, or when their business activities do not have established transition pathways defined by IEA climate scenario models.

However, for companies with operations concentrated in certain high-emitting activities,¹⁷ sector-specific budgets are defined in terms of a given unit of output (for example, tons of carbon and carbon equivalents (tCO₂e) per ton of crude steel produced). This method, known as the Sectoral Decarbonization Approach (SDA),¹⁸ permits sectors to decarbonize at varying speeds, depending on the opportunities available given the current technologies within each sector.

For companies with operations concentrated in certain high-emitting activities, sector-specific budgets are defined.

Together, these budgets assign each company a maximum amount of emissions each year. Trucost compares these budgets with forward-looking estimates and realized GHG emissions for companies. Exhibit 6 illustrates what the individual company emission trajectories might look like. In this way, Trucost models company emissions toward a trajectory consistent with a 1.5°C scenario in their transition pathway models. This enables the S&P PACT Indices to reweight companies, so the index as a whole is 1.5°C compatible, on a forward-looking basis, at rebalance.

¹⁴ As referenced in footnotes 16 and 18.

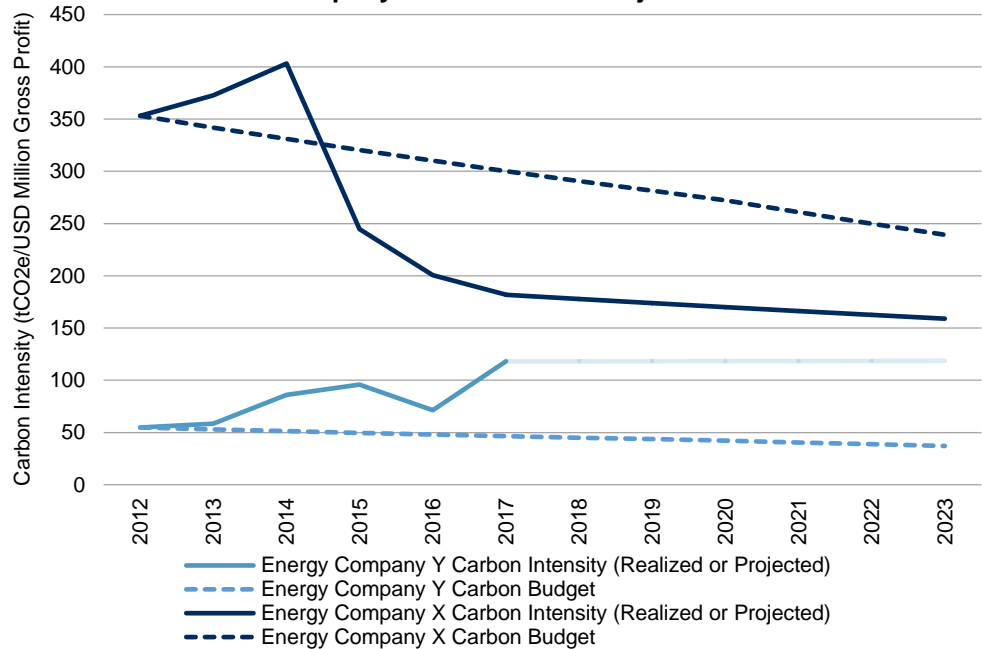
¹⁵ Science Based Targets initiative, 2020. <https://sciencebasedtargets.org/existing-methodologies/>.

¹⁶ Randers, 2012.

¹⁷ These include power (GWh), cement (tons), steel (tons), aluminum (tons), and air transport (passenger miles).

¹⁸ Krabbe et al., 2015.

Exhibit 6: Illustrative Company GHG Emission Trajectories



Together, the GEVA and SDA approaches assign each company a maximum amount of GHG emissions each year.

The Trucost transition pathway models enable S&P PACT Indices to reweight companies, so the index is 1.5°C compatible, on a forward-looking basis.

Source: Trucost, part of S&P Global. The GHG emissions intensity is based on scopes 1 and 2 emissions to avoid double counting when setting individual company budgets. Chart is provided for illustrative purposes.

Rewarding Companies with Science-Based Targets

To enhance exposure of companies aligned with a 1.5°C scenario, the S&P PACT Indices overweight companies with publicly disclosed science-based targets (SBTs) that adhere to the following criteria (see Exhibit 7), as per the EU’s proposed minimum standards, to prevent climate index greenwashing.

Exhibit 7: Proposed EU Criteria for Companies with SBTs

CRITERIA FOR COMPANY SBTs

1. The targets are publicly disclosed and aligned with a 1.5°C scenario.
2. The targets incorporate all scopes 1, 2, and 3 emissions.
3. Companies sufficiently disclose their scopes 1, 2, and 3 emissions.
4. Companies must exhibit 7% annualized decarbonization over the past three years.
5. The targets must represent an annualized decarbonization rate of 7% when accounting for scopes 1, 2, and 3 (both upstream and downstream) targets, assuming the companies’ current composition of emissions.

Source: The EU Technical Expert Group on Sustainable Finance. Table is provided for illustrative purposes.

The S&P PACT Indices overweight companies with publicly disclosed science-based targets that adhere to the EU’s proposed minimum standards.

If a company discloses SBTs, it demonstrates that it is actively thinking about and managing its transition to a low-carbon future and is thus more likely to succeed in reducing its exposure to transition risks. However, any company that discloses SBTs must be held accountable to ensure it achieves what it claims to do. Hence, the importance of setting such stringent criteria before overweighting companies in climate indices seeking either EU CTB or PAB labels. The S&P PACT Index Series rewards

Unlike the EU's proposed minimum standards, the S&P PACT Indices Methodology includes scopes 1, 2, and 3 from the start.

companies that meet the above criteria by increasing their standing in the index with at least a collective 20% overweight. This collective overweight function allows for some companies to be overweighted by more than this and potentially for some to be underweighted. This thereby provides the flexibility required to incorporate numerous other climate objectives in the S&P PACT Index Series Methodology.

The Treatment of Scope 3 Emissions

At the activity level, the DNSH principle instructs that contributing to one environmental objective should not significantly harm any other environmental objectives.

The EU's proposed minimum standards provide up to a four-year grace period for phasing in scope 3 emissions. However, the S&P PACT Indices' Methodology includes scopes 1, 2, and 3 from the start.¹⁹ Both upstream and downstream scope 3 emissions are key to understanding a complete picture of company emissions throughout the value chain. This is especially true since the ratio of scopes 1 and 2 emissions with scope 3 emissions is not constant across sectors. As such, incorporating scope 3 emissions helps to ensure a more holistic assessment of a company's overall transition risk.

Index Exclusions and the Principle of “Do No Significant Harm”

To meet the EU's proposed minimum standards, the S&P PACT Indices make all of these exclusions, and go even further.

In addition to the primary goal of transitioning to a 1.5°C scenario, the EU's proposed minimum standards espouse a principle of “Do No Significant Harm” (DNSH). At the security level, this means ensuring that the pursuit of environmental objectives is not at the expense of social norms. Thus, the proposed standards demand baseline exclusions of companies with direct controversial weapons exposure and companies at risk of violating global social norms, measured by their performance against the principles of the UN Global Compact. At the activity level, the DNSH principle instructs that contributing to one environmental objective should not significantly harm any other environmental objectives. As such, the regulation requires the exclusion of companies embroiled in controversies arising from practices that significantly harm one of several environmental objectives.²⁰

To meet the EU's proposed minimum standards, the S&P PACT Indices make the above exclusions, and go even further—by additionally excluding companies with direct exposure to tobacco and those involved in material public controversies pertaining to broader environmental, social, and governance (ESG) issues, not just the various environment-related

¹⁹ The GHG Protocol classifies a company's GHG emissions into three scopes. Scope 1 emissions are direct emissions from owned or controlled sources. Scope 2 emissions are indirect emissions from the generation of purchased energy. Scope 3 emissions are all indirect emissions (not included in scope 2) that occur in the value chain of the company, including both upstream and downstream emissions. (Greenhouse Gas Protocol. https://ghgprotocol.org/sites/default/files/standards_supporting/FAQ.pdf).

²⁰ These include: 1) climate change mitigation; 2) climate change adaptation; 3) sustainable use and protection of water and marine resources; 4) transition to a circular economy, waste prevention and recycling; 5) pollution prevention and control; and 6) protection of healthy ecosystems.

controversies stipulated, for a more sustainable climate index.²¹ Further, unrelated to the DNSH principle, benchmarks seeking to obtain the more ambitious EU PAB label must additionally exclude various fossil fuel and power generation companies based on business activities. Exhibit 8 describes the exclusions of the S&P PACT Indices in detail.

Benchmarks seeking to obtain the more ambitious EU PAB label must additionally exclude various fossil fuel and power generation companies based on business activities.

Exhibit 8: S&P PACT Index Series Exclusions	
EXCLUSION	THRESHOLD
ESG EXCLUSIONS	
Controversial Weapons	Any direct exposure of 25% or greater ownership
Low UN Global Compact Score	Worst 5% globally
Controversies (SAM MSA)	Daily filtering, screening, and analyzing of controversies related to companies within the index; index committee reviews and excludes worst offenders
Tobacco	Any direct exposure of 25% or greater ownership
FOSSIL FUEL OPERATIONS AND POWER GENERATION (ONLY APPLIES TO THE S&P PA INDICES)	
Coal	1% or more of revenue derived from coal exploration or processing activities
Oil	10% or more of revenue derived from oil exploration or processing activities
Natural Gas	50% or more of revenue derived from natural gas exploration or processing activities
Highly Intensive Electricity Generation	50% or more of revenue derived from electricity generation with a GHG intensity of lifecycle GHG emissions above 100 gCO ₂ e/kWh

Source: S&P Dow Jones Indices LLC. Table is provided for illustrative purposes.

TWO BIRDS, ONE STONE: HOW THE S&P PACT INDICES ALIGN WITH THE EU'S PROPOSED MINIMUM STANDARDS AND TCFD RECOMMENDATIONS

Accounting for Physical Climate Risks

Unlike transition risk, which can affect companies in any location, specific locations have increased likelihood of physical climate risk. Thus, climate modeling datasets and hazard models must be coupled with geolocation-specific, asset-level data. Trucost's climate change physical risk dataset—which includes the impact of wildfires, cold waves, heatwaves, water stress, sea-level risk, floods, and hurricanes—is unparalleled in this regard, within investable products.

Exhibit 9 summarizes Trucost's physical risk methodology. In addition to assessing a company's exposure to physical climate risks, Trucost also determines a company's sensitivity to these risks, based on the types of asset and business operations affected. For example, an IT firm's corporate offices are generally less sensitive to water stress than a food and beverage company's manufacturing plants, as the former is much less

Climate modeling datasets and hazard models must be coupled with geolocation-specific, asset-level data.

²¹ This is achieved through the use of Media & Stakeholder Analysis (MSA) from SAM, part of S&P Global. For more information, visit https://portal.csa.spglobal.com/survey/documents/MSA_Methodology_Guidebook.pdf.

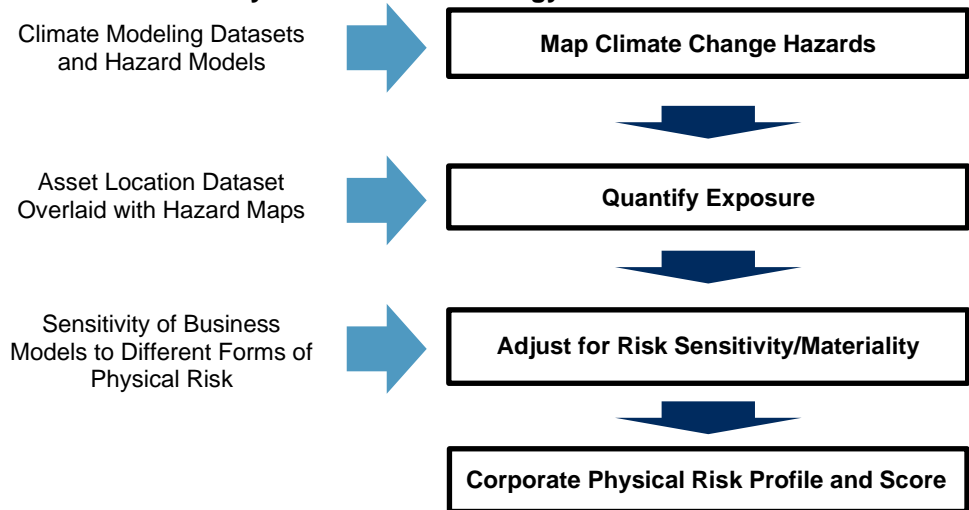
water intensive. However, the IT firm’s office might be more sensitive to heatwaves due to falling worker productivity and overheating equipment.

Trucost’s dataset allows the S&P PACT Index Series to go beyond the requirements of the EU CTB and PAB labels...

Trucost’s dataset allows the S&P PACT Index Series to go beyond the requirements of the EU CTB and PAB labels, capping individual company exposure to physical risk and reducing the physical climate risk exposure of the index overall. The former helps to mitigate tail risk from acute climate hazards, such as hurricanes and wildfires, while the latter serves to mitigate the long-term effects of chronic physical risks like rising sea levels.

Exhibit 9: Trucost Physical Risk Methodology

...capping individual company exposure to physical risk and reducing the physical climate risk exposure of the index overall.



Source: Trucost, part of S&P Global. Chart is provided for illustrative purposes.

Sizing up the Opportunities

From an investor’s perspective, the consequences of climate action (or lack thereof) can lead to both gains and losses. Ignoring the opportunities does not allow investors to benefit from the low-carbon transition. For example, while a 1.5°C scenario implies fossil fuels would need to fall from 83% of primary energy in 2020 to about 33% in 2050, the slack will likely be picked up by renewables, expected to grow from 15% to about 60% over the same period.²² To account for this, the S&P PA Indices make adjustments to companies’ weights that are involved in power generation, improving the green-to-brown ratio by overweighting companies with more revenues from green power generation activities relative to brown. The weights are accounted for so that the green-to-brown ratio of the index is either maintained in the S&P CT Indices or improved by at least a factor of four for the S&P PA Indices, relative to the underlying benchmark. These adjustments further demonstrate the holistic approach that has been adopted to align the S&P PACT Indices with recommendations from the EU-appointed TEG and the TCFD (see Exhibit 10).

From an investor’s perspective, the consequences of climate action (or lack thereof) can lead to gains and losses.

²² Rogelj, 2018.

To deepen alignment with the TCFD framework, the S&P PACT Indices go beyond the EU’s proposed minimum standards.

Exhibit 10: Green and Brown Power Generation Activities Assessed in the S&P PACT Indices

GREEN POWER GENERATION	BROWN POWER GENERATION
Biomass Power Generation	Coal Power Generation
Geothermal Power Generation	Petroleum Power Generation
Hydroelectric Power Generation	Natural Gas Power Generation
Solar Power Generation	
Wave and Tidal Power Generation	
Wind Power Generation	
Nuclear Electric Power Generation	

Source: S&P Dow Jones Indices LLC. Table is provided for illustrative purposes.

A More Holistic Approach to Transition Risk

To deepen alignment with the TCFD framework, the S&P PACT Indices go beyond the EU’s proposed minimum standards and incorporate the following additional objectives for a more holistic approach to transition risk.

The S&P PA Indices reduce the fossil fuel reserve exposure by a minimum of 80%...

i. Mitigating Stranded Asset Risk: To mitigate the possibility of exposure to costly asset write-downs, the S&P PA Indices reduce the fossil fuel reserve exposure by a minimum of 80%, while the S&P CT Indices maintain exposure so it is no worse than the underlying index. This is important because the achievement of even a 2°C scenario requires that 80% of all known—proven and probable—fossil fuel reserves must remain firmly within the ground.²³ The reason for this is that the GHG emissions that would otherwise be released from their combustion would be so significant that the resultant rise in global temperatures would likely far exceed 2°C of warming since pre-industrial levels. Thus, for the more ambitious goal of transitioning to a 1.5°C world, the curbing of fossil fuels must be even greater. However, still to this day, the valuations of fossil fuel companies tend to assume that these reserves—listed as assets on company balance sheets—will eventually be realized. To the extent that carbon-limiting regulation is successful in achieving the goals of the Paris Agreement (let alone more stringent climate action), these assets may become “stranded,” implying a potentially systemic mispricing of fossil fuel companies as currently overvalued—with potential risk for any investment strategy that continues to hold them.

...while the S&P CT Indices maintain exposure so it is no worse than the underlying index.

ii. Environmental Policy Strength: Companies with strong environmental policies are arguably better equipped to deal with the risks posed by the low-carbon transition. For this reason, the S&P PACT Indices seek to improve (PAB label) or maintain (CTB label) environmental policy strength, as measured by the S&P DJI Environmental Score. This score provides insights into the financially material aspects of a company’s climate strategy,

The S&P PACT Indices seek to improve or maintain environmental policy strength, as measured by the S&P DJI Environmental Scores.

²³ Carbon Tracker, 2011.

In the S&P PACT Indices Methodology, the climate objectives serve as optimization constraints...

...where the objective function is to minimize active share while accommodating the climate requirements.

Minimizing active share helps to reduce the impact of the absolute decarbonization on tracking error.

environmental policy and management systems, electricity generation, environmental business risks and opportunities, low-carbon strategy, recycling strategy, co-processing, and more. The S&P PA Indices ensures a weighted average increase of S&P DJI Environmental Score relative to the underlying index by 20% of the possible improvement. The S&P CT Indices prevents any worsening of environmental policy strength. S&P DJI Environmental Scores, available through S&P DJI ESG Scores,²⁴ are based upon the renowned SAM Corporate Sustainability Assessment, which ranks as the highest quality among ESG rating providers, according to leading sustainability professionals (Rate the Raters Survey, SustainAbility, 2019).²⁵

MAINTAINING BROAD, DIVERSIFIED EXPOSURE

The Benefits of Minimizing Active Share

In the S&P PACT Indices Methodology, the climate objectives discussed thus far serve as optimization constraints—where the objective function is to minimize active share while accommodating the climate requirements.

This matters especially because a transition to a 1.5°C world will likely require an absolute reduction in global GHG emissions. Thus, in addition to an initial 30% and 50% carbon reduction relative to the underlying index for the CTBs and PABs, respectively, the EU's proposed minimum standards require a 7% year-on-year self-decarbonization. This target is unrelated to the emissions trajectory of the underlying benchmark. This means that at any given point in time, the precise decarbonization of the index relative to the benchmark is unknown. For this reason, minimizing active share helps to reduce the impact of the absolute decarbonization—which is needed to align with a net-zero emissions pathway by 2050 (i.e., a 1.5°C scenario)—on tracking error.

Exhibit 11 illustrates the potential future carbon intensity trajectories for the CTBs, PABs, and the underlying benchmark (top panel), as well as the implications of the emissions trajectory of the underlying benchmark on the relative carbon intensity reduction that will be required for the CTBs and PABs (bottom panel). Note the initial reductions of 30% and 50% emissions relative to the underlying benchmark for the CTB and PAB versions, respectively.

²⁴ To learn more about S&P DJI Environmental and S&P DJI ESG Scores, visit <https://spj.com/topic/esg-scores>

²⁵ Approximately 70% of respondents to this annual survey of sustainability professionals had more than 10 years of experience. Visit <https://sustainability.com/our-work/reports/rate-raters-2019/> to learn more.

Exhibit 11: Hypothetical Future GHG Intensity Trajectories and Relative GHG Intensity Reduction Requirements to Retain EU PAB and CTB Status and Align with a 1.5°C Scenario

Potential Future GHG Emissions Intensity Trajectories for the PAB and CTB

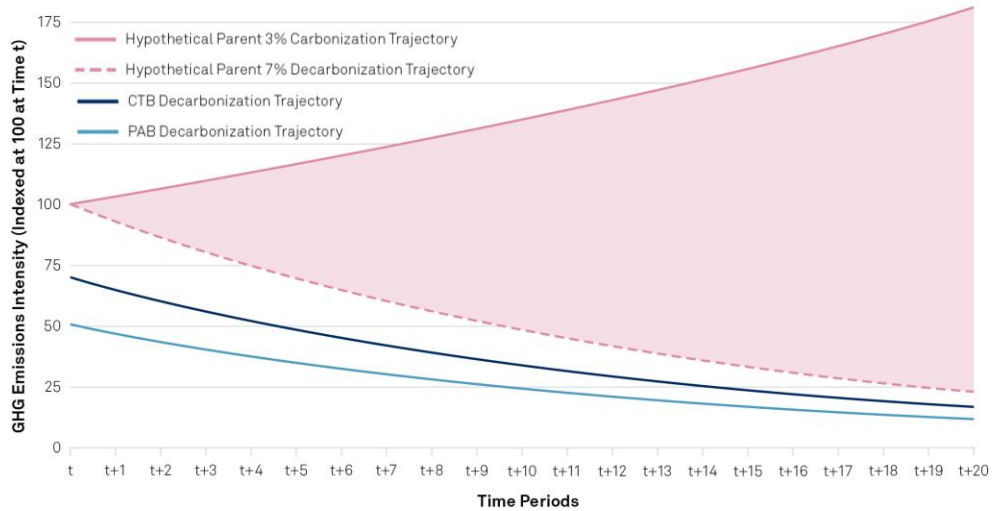
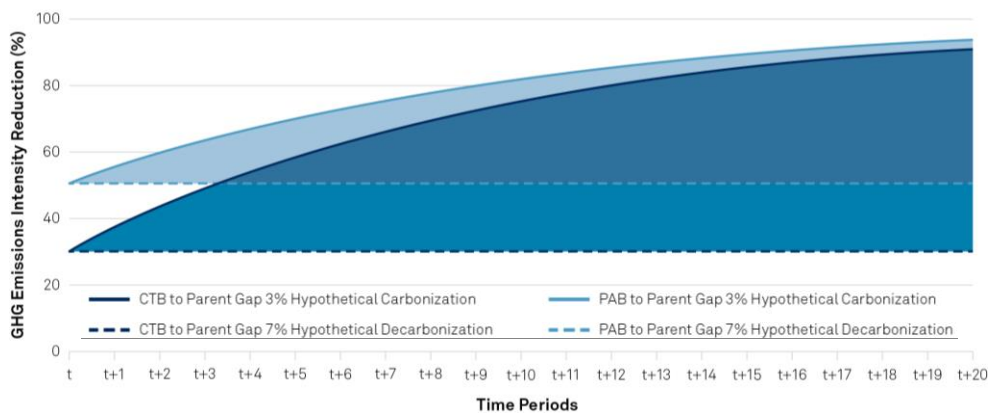


Exhibit 11 shows the initial reductions of 30% and 50% emissions relative to the underlying benchmark for the CTB and PAB versions, respectively.

Potential Future GHG Emissions Intensity Reduction Estimations for the PAB and CTB



Source: S&P Dow Jones Indices LLC. Charts are provided for illustrative purposes.

We have high confidence that an absolute reduction in GHG emissions is required to limit warming to 1.5°C since pre-industrial levels.

The future GHG emissions intensity trajectory of the underlying benchmark is unknown. However, we have high confidence that an absolute reduction in GHG emissions is required to limit global warming to within 1.5°C since pre-industrial levels. As such, the 7% year-on-year decarbonization target required by the EU CTB and PAB labels means the future required decarbonization relative to the underlying benchmark is unknown, since we do not know how quickly the benchmark would decarbonize (if at all). If the underlying benchmark decarbonizes at a rate of less than 7% year-on-year, then the implied decarbonization relative to the underlying index (bottom panel) will grow exponentially. Using an optimization to minimize active share helps reduce the possibility of high tracking error between the index and its underlying benchmark, and may be particularly useful if the overall market fails to decarbonize at a sufficient rate over time. Furthermore, strategies that target a specific level of tracking error or active share may find their methodology does not facilitate a solvable solution if the required decarbonization increases.

Summary of S&P PACT Indices Methodology

The methodology first excludes ineligible constituents from the underlying benchmark universe (see Exhibit 8). Then, based on the eligible constituents that remain, the methodology assigns weights by optimizing to minimize the differences in weights to the underlying index, while achieving all the climate objectives (see Exhibit 12).

Exhibit 12: S&P PACT Index Constraints Relative to the Underlying Benchmark			
CONSTRAINT	PAB	CTB	DATA SOURCE
TRANSITION RISK-RELATED CONSTRAINTS			
Weighted Average GHG Emissions per U.S. Dollar Invested (relative to 1.5°C budget)	≤ 0	≤ 0	Trucost
GHG Emissions Intensity ²⁶	50% lower	30% lower	Trucost
Decarbonization Trajectory (adjusted for enterprise value growth).	WACI must stay below the 7% year-on-year trajectory	WACI must stay below the 7% year-on-year trajectory	Trucost
Exposure to Companies with Science-Based Targets (based on 1.5°C scenario and 7% decarbonization)	Increase collective index weight of all companies with SBTs by 20% overall	Increase collective index weight of all companies with SBTs by 20% overall	Trucost/SBTi
Fossil Fuel Reserve Exposure	80% lower	No higher	Trucost
Environmental Score	20% higher	No lower	S&P DJI ESG Scores
Revenue from High Climate Impact Sectors ²⁷	Maintain at least same proportion	Maintain at least same proportion	Trucost
Weight of Non-Disclosing Companies	Capped at x 1.1	Capped at x 1.1	Trucost
PHYSICAL RISK-RELATED CONSTRAINTS			
Physical Risk Exposure	10% lower	No higher	Trucost
Physical Risk Cap	Dynamic cap based on the level of physical risk of each stock	Dynamic cap based on the level of physical risk of each stock	Trucost
OPPORTUNITY-RELATED CONSTRAINTS			
Green-to-Brown Revenue Share from Power Generation	4x higher	No lower	Trucost
INDEX CONSTRUCTION RULES			
Constituent Weights	±2%	±2%	-
Minimum Weight	0.01%	0.01%	-
Liquidity	Company weight capped based on an investment of EUR 1 billion and the length of time it would take to trade, based on the company's three-month median daily value traded	Company weight capped based on an investment of EUR 1 billion and the length of time it would take to trade, based on the company's three-month median daily value traded	-
Diversification	Individual stock weights capped at 5%	Individual stock weights capped at 5%	-

Source: S&P Dow Jones Indices LLC. Table is provided for illustrative purposes.

²⁶ Calculated using weighted average carbon intensity (WACI), which is measured as tCO₂e divided by enterprise value including cash (EVIC), based on Trucost emissions data that account for all scopes 1, 2, and 3 emissions from inception.

²⁷ High climate impact sectors are defined by The EU Technical Expert Group on Sustainable Finance (2019).

RESULTS AND PERFORMANCE

On April 20, 2020, the first S&P PACT Indices were launched...
 were launched...

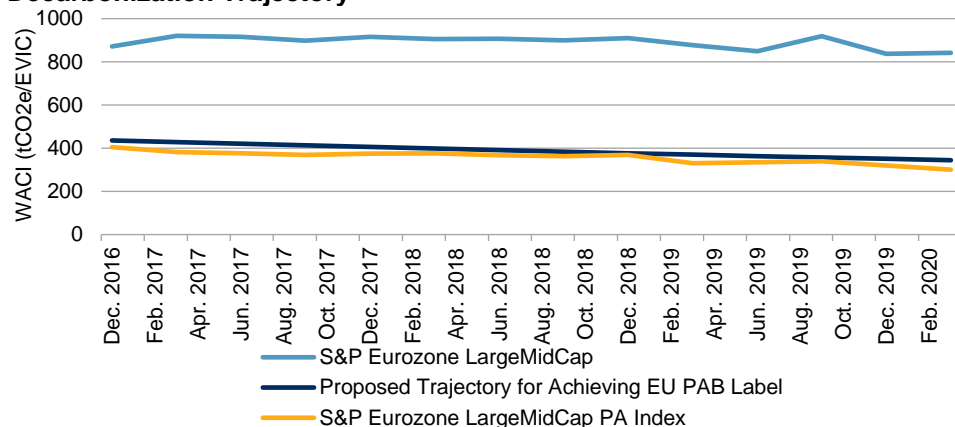
On April 20, 2020, the first S&P PACT Indices were launched—including the [S&P Eurozone LargeMidCap PA Index](#) and [S&P Eurozone LargeMidCap CT Index](#).²⁸ The following sections explore the climate impacts and performance of the first indices from the series.

GHG Emissions Intensity

Exhibit 13 illustrates the GHG emissions intensity of the [S&P Eurozone LargeMidCap](#) and the S&P Eurozone LargeMidCap PA Index, against the decarbonization trajectory as proposed by the EU’s minimum standards for PABs.

Exhibit 13: GHG Emissions Intensity over Time versus the Proposed Decarbonization Trajectory

...including the S&P Eurozone LargeMidCap PA Indices...



Source: S&P Dow Jones Indices LLC. Data as of March 2020. Weighted average carbon intensity (WACI) is inflation adjusted using quarterly average weights and measured as tCO₂e divided by enterprise value including cash (EVIC), based on Trucost emissions data that account for all scopes 1, 2, and 3 emissions from inception. Chart is provided for illustrative purposes and reflects hypothetical historical performance. Please see the Performance Disclosure at the end of this document for more information regarding the inherent limitations associated with back-tested performance.

...which satisfied both criteria of a 50% lower GHG emissions intensity than the underlying index and a 7% year-over-year self-decarbonization trajectory.

As Exhibit 13 shows, the S&P PA Indices Methodology satisfied both criteria of: (1) a 50% lower GHG emissions intensity than the underlying benchmark and (2) a 7% year-on-year self-decarbonization trajectory.

The first quarter of 2020 proved a stern test for the S&P PACT Indices Methodology, due to high levels of market volatility, causing falling EVIC, the denominator used for calculating the GHG emissions intensity. Over this period, the EVIC fell by 14%. Controlling for fluctuating EVIC minimizes market impact on the 7% year-on-year self-decarbonization, allowing company emissions to drive the decarbonization, rather than EVIC itself. Thus, despite the volatility over this period, this approach enabled the S&P Eurozone LargeMidCap PA Index to satisfy both criteria.

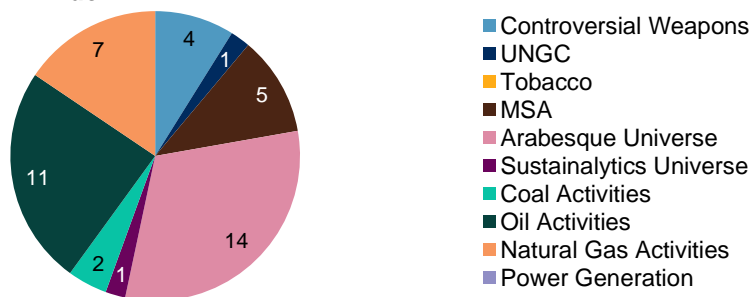
²⁸ The S&P PACT Indices will additionally include PA and CT versions of other widely tracked regional and country-specific indices in Europe, the U.S., and developed markets.

Index Exclusions

As of the index launch in April 2020, 173 of the 254 constituents of the S&P Eurozone LargeMidCap were included in the S&P Eurozone LargeMidCap PA Index. Of these 173 constituents, 39 were ineligible due to the exclusion criteria. Exhibit 14 highlights the rationale for each of these exclusions. The remaining 43 companies were not selected due to their inability to align with the various climate goals of the index, which means their optimized weights would not meet the required 1 basis point threshold.

The S&P PACT Indices are designed to track the benchmark index as closely as possible.

Exhibit 14: Baseline and Activity-Related Exclusions from the S&P Eurozone LargeMidCap PA Index



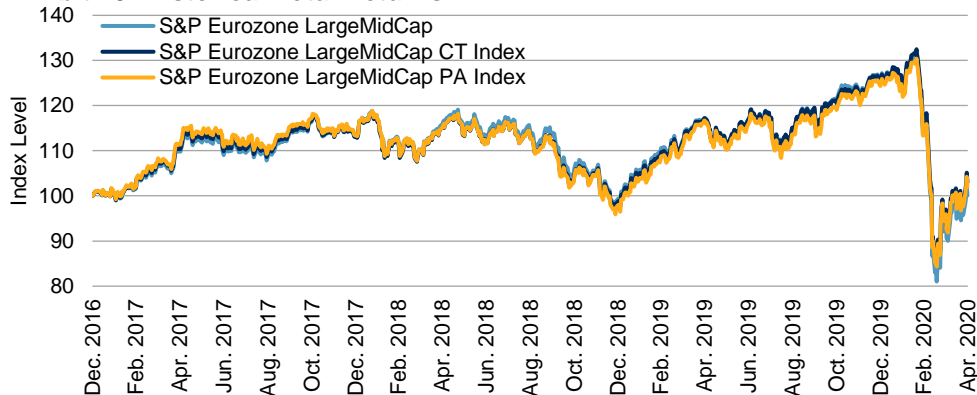
Source: S&P Dow Jones Indices LLC. Chart is provided for illustrative purposes.

Risk and Return

The S&P PACT Indices are designed to track the underlying benchmark as closely as possible, while simultaneously satisfying all constraints outlined in Exhibit 12. For the S&P Eurozone LargeMidCap PA Index, the strategy exhibited 1.64% of tracking error with excess returns of 2.05% compared with the underlying benchmark over the past year (see Exhibits 15 and 16).

Both of the S&P PACT Indices outperformed the S&P Eurozone LargeMidCap over the past one-year period and since inception.

Exhibit 15: Historical Total Returns



Source: S&P Dow Jones Indices LLC. Data as of April 30, 2020. Index performance based on total returns in EUR. Chart is provided for illustrative purposes and reflects hypothetical historical performance. Please see the Performance Disclosure at the end of this document for more information regarding the inherent limitations associated with back-tested performance.

Both of the S&P PACT Indices outperformed the S&P Eurozone LargeMidCap over the past one-year period and since inception (see Exhibit 16). Risk-based active return attribution showed 85% of the S&P Eurozone LargeMidCap PA Index’s outperformance may be explained by a

specific effect—that is, returns that cannot be explained by risk model factors. This unexplained alpha could be explained by a compensated risk premium associated with the S&P PACT Indices' Methodology, other factors not incorporated in the risk model used, or other sources. A similar story was true of the S&P Eurozone LargeMidCap CT Index, although a higher percentage of active returns can be explained by the risk factors.

The potentially disastrous impacts associated with rising global temperatures underscore the importance of climate action.

Investors and other market participants therefore have a critical role to play when it comes to financing a low-carbon transition

The S&P PACT Indices supply the market with sustainable versions of S&P DJI benchmarks that are designed to align investments with a 1.5°C scenario and to achieve net-zero emissions by 2050.

Exhibit 16: Risk/Return Characteristics

CHARACTERISTIC	S&P EUROZONE LARGEMIDCAP	S&P EUROZONE LARGEMIDCAP CT INDEX	S&P EUROZONE LARGEMIDCAP PA INDEX
ANNUALIZED RETURN			
One-Year (%)	-14.64	-12.11	-12.59
Since Inception (%)	0.03	0.90	0.59
EXCESS RETURN			
One-Year (%)	-	2.53	2.05
Since Inception (%)	-	0.87	0.56
VOLATILITY			
One-Year (%)	26.40	25.38	25.39
Since Inception (%)	17.39	16.83	16.95
TRACKING ERROR			
One-Year (%)	-	2.13	2.36
Since Inception (%)	-	1.37	1.64
OTHER CHARACTERICS			
Active Share (%)	-	15.92	29.62
Stock Count	255	215	173

Source: S&P Dow Jones Indices LLC. Data as of Jan. 1, 2020. Attribution has been calculated using Axioma risk models. Index performance based on total returns in EUR. Past performance is no guarantee of future results. Table is provided for illustrative purposes and reflects hypothetical historical performance. Please see the Performance Disclosure at the end of this document for more information regarding the inherent limitations associated with back-tested performance.

CONCLUSION

The potentially disastrous impacts associated with rising global temperatures underscore the importance of climate action. Investors and other market participants therefore have a critical role to play when it comes to financing a low-carbon transition. Regardless, the perils of climate change represent financially material risks for investor portfolios that need to be managed. To that end, the S&P PACT Indices supply the market with sustainable versions of S&P DJI benchmarks that are designed to align investments with a 1.5°C scenario and achieve net-zero emissions by 2050. The indices draw upon S&P Global's market-leading environmental data and models to not only meet but exceed new technical standards proposed by the EU for Paris-Aligned and Climate-Transition Benchmarks, as well as TCFD recommendations—by accounting for the physical risks, transition risks, and financial opportunities arising from climate change. Numerous climate objectives are simultaneously incorporated while minimizing deviations from the underlying benchmark, resulting in broad, diversified exposure. The S&P PACT Indices thus provide a formidable new investor toolkit for adhering to our collective “pact” of transitioning to a 1.5°C world.

WORKS CITED

- Armour, K. C., Marshall, J., Scott, J. R., Donohoe, A., & Newsom, E. R. (2016). Southern Ocean Warming Delayed by Circumpolar Upwelling and Equatorward Transport. *Nature Geoscience*, 9, 549-554.
- Byers et al. (2018). Global exposure and vulnerability to multi-sector development and climate change hotspots. *IOP Science*.
- Carbon Tracker. (2011). *The Carbon Bubble*.
- Keenan, T. F., Prentice, I. C., Canadell, J. G., Williams, C. A., Wang, H., Raupach, M., & Collatz, G. J. (2016). Recent pause in the growth rate of atmospheric CO₂ due to enhanced terrestrial carbon uptake. *Nature Commun*, 7:13428.
- Krabbe, O., Linthorst, G., Blok, K., Crijns-Graus, W., van Vuuren, D., Höhne, N., . . . Pineda, A. C. (2015). Aligning Corporate Greenhouse-Gas Emissions Targets with Climate Goals. *Nature Climate Change*.
- Masson-Delmotte, V., Zhai, P., Pörtner, H. O., Roberts, D., Skea, J., Shukla, P. R., . . . Waterfield, T. (2018). *Global warming of 1.5°C. An IPCC Special Report on the impacts of global warming of 1.5°C*. IPCC.
- Mengel, M., & Levermann, A. (2014). Ice Plug Prevents Irreversible Discharge From East Antarctica. *Nature Climate Change*, 4, 451-455.
- NOAA National Centers for Environmental Information. (2020). *State of the Climate: Global Climate Report for January 2020*. NOAA. Retrieved from <https://www.ncdc.noaa.gov/sotc/global/202001>
- Randers, J. (2012). Greenhouse gas emissions per unit of value added (“GEVA”) – A corporate guide to voluntary climate action. *Journal Energy Policy*.
- Rogelj, J. D. (2018). *Mitigation Pathways Compatible with 1.5°C in the Context of Sustainable Development*. Retrieved from Intergovernmental Panel on Climate Change: https://www.ipcc.ch/site/assets/uploads/sites/2/2019/02/SR15_Chapter2_Low_Res.pdf
- Science Based Targets Initiative. (2019, April). *Science-Based Target Setting Manual*. Retrieved from <https://sciencebasedtargets.org/wp-content/uploads/2017/04/SBTi-manual.pdf>
- Steffen, W., Rockström, J., Richardson, K., Lenton, T. M., Folke, C., Liverman, D., . . . Schellnhuber, H. J. (2018). Trajectories of the Earth System in the Anthropocene. *PNAS*, 115(33), 8252-8259.
- SustainAbility. (2019). *Rate the Raters 2019: Expert View on ESG Ratings*.
- TCFD. (2017). *Final Report: Recommendations of the Taskforce on Climate Related Financial Disclosures*.
- Temperatures | Climate Action Tracker. (2019, December 10). Retrieved from Climate Analytics and NewClimate Institute: <https://climateactiontracker.org/global/temperatures/>
- The EU Technical Expert Group on Sustainable Finance. (2019). *TEG Final Report on Climate Benchmarks and Benchmarks’ ESG Disclosures*.
- Trucost. (2019). Trucost Scenario Alignment Model.
- UNFCCC. (2015). *The Paris Agreement*.

PERFORMANCE DISCLOSURE

The S&P Eurozone LargeMidCap Paris-Aligned Climate Index and S&P Eurozone LargeMidCap Climate Transition Index were launched April 20, 2020. All information presented prior to an index's Launch Date is hypothetical (back-tested), not actual performance. The back-test calculations are based on the same methodology that was in effect on the index Launch Date. However, when creating back-tested history for periods of market anomalies or other periods that do not reflect the general current market environment, index methodology rules may be relaxed to capture a large enough universe of securities to simulate the target market the index is designed to measure or strategy the index is designed to capture. For example, market capitalization and liquidity thresholds may be reduced. Complete index methodology details are available at www.spdji.com. Past performance of the Index is not an indication of future results. Prospective application of the methodology used to construct the Index may not result in performance commensurate with the back-test returns shown.

S&P Dow Jones Indices defines various dates to assist our clients in providing transparency. The First Value Date is the first day for which there is a calculated value (either live or back-tested) for a given index. The Base Date is the date at which the Index is set at a fixed value for calculation purposes. The Launch Date designates the date upon which the values of an index are first considered live: index values provided for any date or time period prior to the index's Launch Date are considered back-tested. S&P Dow Jones Indices defines the Launch Date as the date by which the values of an index are known to have been released to the public, for example via the company's public website or its datafeed to external parties. For Dow Jones-branded indices introduced prior to May 31, 2013, the Launch Date (which prior to May 31, 2013, was termed "Date of introduction") is set at a date upon which no further changes were permitted to be made to the index methodology, but that may have been prior to the Index's public release date.

The back-test period does not necessarily correspond to the entire available history of the Index. Please refer to the methodology paper for the Index, available at www.spdji.com for more details about the index, including the manner in which it is rebalanced, the timing of such rebalancing, criteria for additions and deletions, as well as all index calculations.

Another limitation of using back-tested information is that the back-tested calculation is generally prepared with the benefit of hindsight. Back-tested information reflects the application of the index methodology and selection of index constituents in hindsight. No hypothetical record can completely account for the impact of financial risk in actual trading. For example, there are numerous factors related to the equities, fixed income, or commodities markets in general which cannot be, and have not been accounted for in the preparation of the index information set forth, all of which can affect actual performance.

The Index returns shown do not represent the results of actual trading of investable assets/securities. S&P Dow Jones Indices LLC maintains the Index and calculates the Index levels and performance shown or discussed, but does not manage actual assets. Index returns do not reflect payment of any sales charges or fees an investor may pay to purchase the securities underlying the Index or investment funds that are intended to track the performance of the Index. The imposition of these fees and charges would cause actual and back-tested performance of the securities/fund to be lower than the Index performance shown. As a simple example, if an index returned 10% on a US \$100,000 investment for a 12-month period (or US \$10,000) and an actual asset-based fee of 1.5% was imposed at the end of the period on the investment plus accrued interest (or US \$1,650), the net return would be 8.35% (or US \$8,350) for the year. Over a three year period, an annual 1.5% fee taken at year end with an assumed 10% return per year would result in a cumulative gross return of 33.10%, a total fee of US \$5,375, and a cumulative net return of 27.2% (or US \$27,200).

GENERAL DISCLAIMER

Copyright © 2020 S&P Dow Jones Indices LLC. All rights reserved. STANDARD & POOR'S, S&P, S&P 500, S&P 500 LOW VOLATILITY INDEX, S&P 100, S&P COMPOSITE 1500, S&P MIDCAP 400, S&P SMALLCAP 600, S&P GIVI, GLOBAL TITANS, DIVIDEND ARISTOCRATS, S&P TARGET DATE INDICES, GICS, SPIVA, SPDR and INDEXOLOGY are registered trademarks of Standard & Poor's Financial Services LLC, a division of S&P Global ("S&P"). DOW JONES, DJ, DJIA and DOW JONES INDUSTRIAL AVERAGE are registered trademarks of Dow Jones Trademark Holdings LLC ("Dow Jones"). These trademarks together with others have been licensed to S&P Dow Jones Indices LLC. Redistribution or reproduction in whole or in part are prohibited without written permission of S&P Dow Jones Indices LLC. This document does not constitute an offer of services in jurisdictions where S&P Dow Jones Indices LLC, S&P, Dow Jones or their respective affiliates (collectively "S&P Dow Jones Indices") do not have the necessary licenses. Except for certain custom index calculation services, all information provided by S&P Dow Jones Indices is impersonal and not tailored to the needs of any person, entity or group of persons. S&P Dow Jones Indices receives compensation in connection with licensing its indices to third parties and providing custom calculation services. Past performance of an index is not an indication or guarantee of future results.

It is not possible to invest directly in an index. Exposure to an asset class represented by an index may be available through investable instruments based on that index. S&P Dow Jones Indices does not sponsor, endorse, sell, promote or manage any investment fund or other investment vehicle that is offered by third parties and that seeks to provide an investment return based on the performance of any index. S&P Dow Jones Indices makes no assurance that investment products based on the index will accurately track index performance or provide positive investment returns. S&P Dow Jones Indices LLC is not an investment advisor, and S&P Dow Jones Indices makes no representation regarding the advisability of investing in any such investment fund or other investment vehicle. A decision to invest in any such investment fund or other investment vehicle should not be made in reliance on any of the statements set forth in this document. Prospective investors are advised to make an investment in any such fund or other vehicle only after carefully considering the risks associated with investing in such funds, as detailed in an offering memorandum or similar document that is prepared by or on behalf of the issuer of the investment fund or other investment product or vehicle. S&P Dow Jones Indices LLC is not a tax advisor. A tax advisor should be consulted to evaluate the impact of any tax-exempt securities on portfolios and the tax consequences of making any particular investment decision. Inclusion of a security within an index is not a recommendation by S&P Dow Jones Indices to buy, sell, or hold such security, nor is it considered to be investment advice.

These materials have been prepared solely for informational purposes based upon information generally available to the public and from sources believed to be reliable. No content contained in these materials (including index data, ratings, credit-related analyses and data, research, valuations, model, software or other application or output therefrom) or any part thereof ("Content") may be modified, reverse-engineered, reproduced or distributed in any form or by any means, or stored in a database or retrieval system, without the prior written permission of S&P Dow Jones Indices. The Content shall not be used for any unlawful or unauthorized purposes. S&P Dow Jones Indices and its third-party data providers and licensors (collectively "S&P Dow Jones Indices Parties") do not guarantee the accuracy, completeness, timeliness or availability of the Content. S&P Dow Jones Indices Parties are not responsible for any errors or omissions, regardless of the cause, for the results obtained from the use of the Content. THE CONTENT IS PROVIDED ON AN "AS IS" BASIS. S&P DOW JONES INDICES PARTIES DISCLAIM ANY AND ALL EXPRESS OR IMPLIED WARRANTIES, INCLUDING, BUT NOT LIMITED TO, ANY WARRANTIES OF MERCHANTABILITY OR FITNESS FOR A PARTICULAR PURPOSE OR USE, FREEDOM FROM BUGS, SOFTWARE ERRORS OR DEFECTS, THAT THE CONTENT'S FUNCTIONING WILL BE UNINTERRUPTED OR THAT THE CONTENT WILL OPERATE WITH ANY SOFTWARE OR HARDWARE CONFIGURATION. In no event shall S&P Dow Jones Indices Parties be liable to any party for any direct, indirect, incidental, exemplary, compensatory, punitive, special or consequential damages, costs, expenses, legal fees, or losses (including, without limitation, lost income or lost profits and opportunity costs) in connection with any use of the Content even if advised of the possibility of such damages.

S&P Global keeps certain activities of its various divisions and business units separate from each other in order to preserve the independence and objectivity of their respective activities. As a result, certain divisions and business units of S&P Global may have information that is not available to other business units. S&P Global has established policies and procedures to maintain the confidentiality of certain non-public information received in connection with each analytical process.

In addition, S&P Dow Jones Indices provides a wide range of services to, or relating to, many organizations, including issuers of securities, investment advisers, broker-dealers, investment banks, other financial institutions and financial intermediaries, and accordingly may receive fees or other economic benefits from those organizations, including organizations whose securities or services they may recommend, rate, include in model portfolios, evaluate or otherwise address.