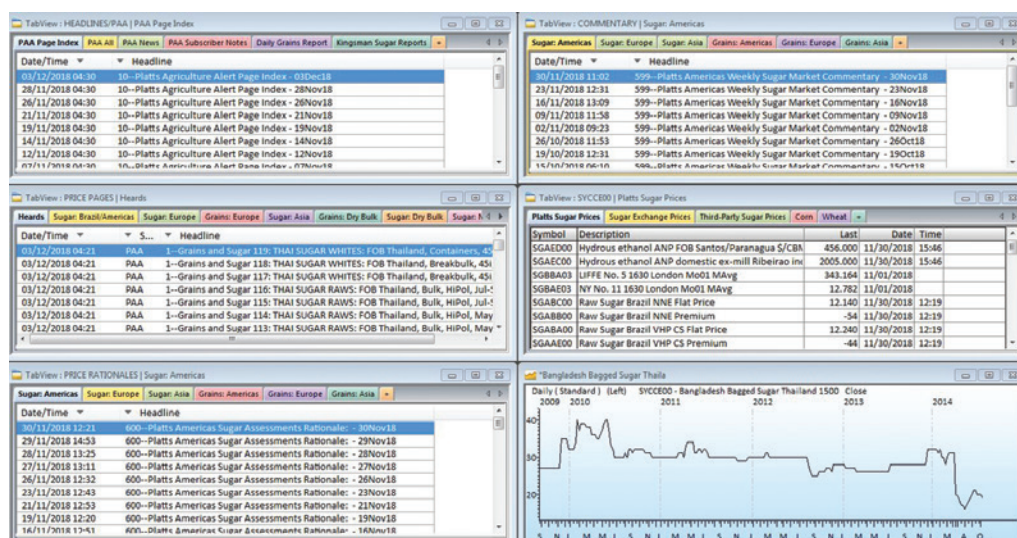


Platts Agriculture Alert

A Page reference guide for PAA users
Many Markets. One Voice.



Platts Agriculture Alert – PAA



Platts Agriculture Alert (PAA) provides up-to-the-minute developments, price discovery, and market commentary for the sugar, grains, and oilseed markets, ensuring you have the critical information you need in your real-time platform of choice, to make profitable decisions. Platts agricultural price assessments are backed by robust methodology so that you can act decisively and with confidence. This quick guide to Platts Agriculture Alert is designed to improve your user experience by providing you essential information to help you discover and navigate through the vast array of the PAA content more efficiently.

It includes page numbers/codes to assessments and commentary by region for key content.

This document is updated on a regular basis so be sure to periodically check that you are using the most recent

version of the document by going to www.spglobal.com/platts/plattscontent/_assets/_files/en/symbol-directories/page-directories/agriculture-alert-page-directory.pdf.

Platts Agriculture Alert (PAA) Basic Service

PAA begins with the basic service, providing you with access on your platform of choice to Platts' daily assessments, market heards, news, commentary, and rationales. Users may purchase PAA as a stand-alone product or as an add-on to Platts Biofuels Alert (PBF).

Platts PAA Master Page Index

Market on Close

| | |
|---------------|---------|
| Global Heards | PAA0001 |
|---------------|---------|

News

| | |
|--------------------------------------|---------|
| PAA News | PAA0100 |
| PAA Subscriber Notes and Corrections | PAA1500 |

Market Assessments - Sugar

| | |
|-------------------------|---------|
| Brazil/Americas Daily | PAA0510 |
| Europe Daily | PAA1430 |
| Asia Daily | PAA2510 |
| Europe Weekly | PAA1432 |
| Europe Monthly Averages | PAA1514 |

Market Assessments - Grains

| | |
|-------------------------------------|---------|
| US Wheat Daily | PAA0440 |
| Latin America Corn Daily | PAA0620 |
| Europe Wheat Daily | PAA1440 |
| Asia Wheat Daily | PAA2440 |
| US Wheat Monthly Averages | PAA0612 |
| Europe Wheat Monthly Averages | PAA1612 |
| Asia Wheat Monthly Averages | PAA2612 |
| Latin America Corn Monthly Averages | PAA0621 |

Market Assessments - Oilseeds

| | |
|---|---------|
| Asia Oilseeds Assessments | PAA2800 |
| Asia Oilseeds Monthly Averages | PAA2801 |
| Latin America Oilseeds Assessments | PAA0800 |
| Latin America Oilseeds Monthly Averages | PAA0801 |
| North America Oilseeds Assessments | PAA0810 |
| North America Oilseeds Monthly Averages | PAA0811 |
| European Oilseeds Assessments | PAA1810 |
| European Oilseeds Monthly Averages | PAA1811 |

Market Assessments - Dried Distiller Grains (DDGs)

| | |
|---------------------------|---------|
| Americas Daily | PAA0501 |
| Americas Weekly Averages | PAA0502 |
| Americas Monthly Averages | PAA0503 |

Market Commentaries - Sugar

| | |
|----------------------------------|--------------|
| Global Daily | PAA3599 |
| Global Weekly | PAA3600 |
| Americas Weekly | PAA0599 |
| Europe Weekly | PAA1599 |
| India-Asia Weekly | PAA2599 |
| EU Weekly Sugar Report | PAA1601-1602 |
| Europe Monthly Analysis | PAA1603-1604 |
| India-Asia Sugar Market Analysis | PAA1605-1606 |

Market Commentaries - Grains

| | |
|--------------------------|---------|
| US Daily | PAA0699 |
| Europe Daily | PAA1699 |
| Asia Wheat Daily | PAA2699 |
| Asia Corn Daily | PAA2688 |
| Latin America Corn Daily | PAA0698 |

Market Commentaries - Oilseeds

| | |
|--|---------|
| Asia Soybean Market Commentary | PAA2899 |
| Brazil Soybean Market Commentary | PAA0899 |
| US Soybean Market Commentary | PAA0898 |
| European Sunflower Oil Market Commentary | PAA1899 |

Market Commentaries - Dried Distiller Grains (DGGs)

| | |
|----------------|---------|
| Americas Daily | PAA0504 |
|----------------|---------|

Market Rationales - Sugar

| | |
|----------------|---------|
| Americas Daily | PAA0600 |
| Europe Daily | PAA1600 |
| Asia Daily | PAA2600 |

Market Rationales - Grains

| | |
|----------------------|---------|
| US Daily | PAA0700 |
| Europe Daily | PAA1700 |
| Asia Wheat Daily | PAA2700 |
| Asia Corn Daily | PAA2710 |
| Brazil Corn Daily | PAA0629 |
| Argentina Corn Daily | PAA0634 |

Market Rationales - Oilseeds

| | |
|--|---------|
| Asia Soybean Assessment Rationale | PAA2895 |
| Brazil Soybean Assessment Rationale | PAA0895 |
| US Soybean Assessment Rationale | PAA0896 |
| European Ukraine Sunflower Oil Rationale | PAA1898 |

Market Rationales - Dried Distiller Grains (DDGs)

| | |
|---|---------|
| US Dried Distiller Grains (DDGs) Rationales | PAA0505 |
|---|---------|

Freight

| | |
|---------------------------------------|---------|
| Dry Bulk Freight - Grains Assessments | PAA3938 |
| Dry Bulk Freight - Sugar Assessments | PAA3940 |
| Dry Bulk Freight - Sugar Commentary | PAA3941 |

Forex Rates

| | |
|--------------------------------|---------|
| Platts Agriculture Forex Rates | PAA1442 |
|--------------------------------|---------|

Other Content

| | |
|---|---------|
| Sugar - Exchange Data | PAA3010 |
| Sugar - Non-Platts Data | PAA3110 |
| Sugar - ICE Settlement Prices | PAA3210 |
| Sugar - Future Volumes and OI Trades, COT | PAA3310 |
| Weather Commentary | PAA3601 |
| Grains and Oilseeds - Non-Platts Data | PAA3211 |

For more information, please contact the Platts office nearest you:

North America

New York

2 Penn Plaza, 25th Floor
New York, NY 10121-2298, USA
P: +1-800-PLATTS8 (toll-free)
P: +1-212-904-3070 (direct)

Boston

225 Franklin Street, 14th Floor
Boston, MA 02110 USA
P: +1 800-752-8878
P: +1 617-530-8300

Denver

1800 Larimer Street, Suite 2000
Denver, CO 80202, USA
P: +1-720-264-6600

Princeton

One Independence Way
Princeton, NJ 08540, USA
P: +1-800-PLATTS8 (toll-free)

Houston

Heritage Plaza
1111 Bagby Street, Suite 2200
Houston, TX 77002, USA
P: +1-800-PLATTS8 (toll-free)

Pittsburgh

424 South 27th Street, Suite 306
Pittsburgh, PA 15203, USA
P: +1-412-431-4370

Washington, D.C.

1200 G Street NW, Suite 1000
Washington, DC 20005, USA
P: +1-212-904-3070

Latin America

Buenos Aires

Av. Leandro N. Alem 815 – 3th. Floor
(C1001AAD) Buenos Aires Argentina
Tel +5411 3724 350

São Paulo

Av Brigadeiro Faria Lima
201 21st floor
São Paulo – SP Brasil – 05626-100 –
Brazil
P: +55-11-3818-4100

Europe, Middle East and Africa

London

20 Canada Square
9th Floor, Canary Wharf
London E14 5LH, UK
P: +44-20-7176-6111

Dubai

DIFC, The Gate Precinct
Building 1, Level 05
P.O. Box 506650
Dubai, UAE
P: +971-4-372-7100

Moscow

Business Center
Mokhovaya
4/7 Vozdvizhenka Street
Building 2, 7th Floor, 125009
Moscow, Russia
P: +7-495-783-4141

Lausanne

Galerie St-François A
1003 Lausanne, Switzerland
P: +41-21-321-1440

Asia-Pacific

Singapore

12 Marina Boulevard
#23-01 Marina Bay
Financial Centre Tower 3
Singapore 018982
P: +65-6532-2800

Beijing

Suite 1601, 16/F Tower D
Beijing CITC
A6 Jianguo Menwai Avenue
Chaoyang District
Beijing 100022, China
P: +86-10-6569-2929

Hong Kong

Unit 6901, Level 69
International Commerce Centre
1 Austin Road West
Kowloon, Hong Kong
P: +852-2841-1035

Shanghai

33/F Shanghai Plaza
138 Huaihai Road (M)
Shanghai 200021, China
P: +86-21-5110-5488

Tokyo

Marunouchi Kitaguchi
Building, 28th Floor
1-6-5 Marunouchi
Tokyo 100-0005, Japan
P: +81-3-4550-8300

Melbourne

Level 45, 120 Collins Street
Melbourne
VIC 3000, Australia
P: +61-3-9631-2000