

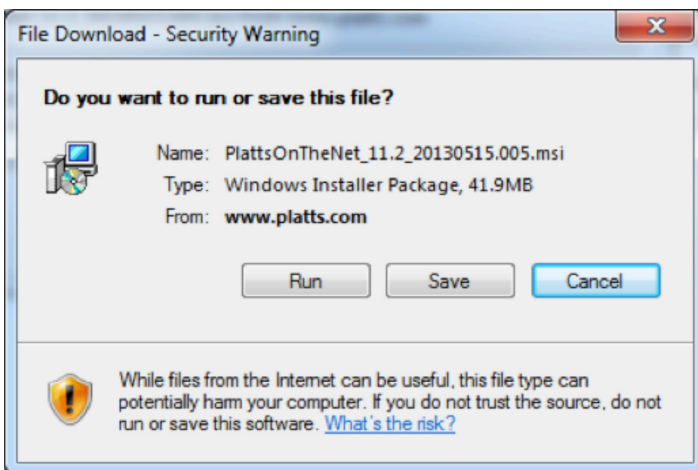
# HOW TO DOWNLOAD AND INSTALL PLATTS ON THE NET (POTN) SOFTWARE

## WELCOME

Platts will provide you with an email containing a User Name, Domain, Password and software download location.

Alternatively, you may find the installation file here:  
[http://www.platts.com/IM.Platts.Content/SubscriberServices/SoftwareUserManuals/PlattsOnTheNet\\_11.2\\_20130515.005.msi](http://www.platts.com/IM.Platts.Content/SubscriberServices/SoftwareUserManuals/PlattsOnTheNet_11.2_20130515.005.msi)

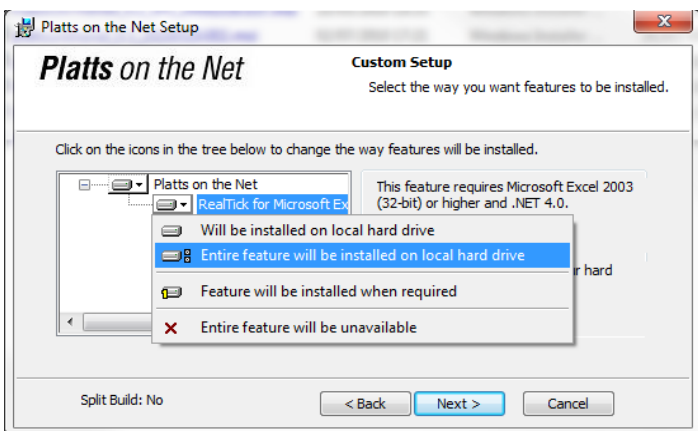
Download the Platts on the Net (POTN) software. Select **Run**  
The only other question will be whether to use Custom or Complete.



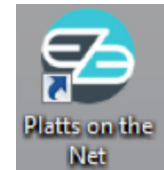
Click Save or Run and then click the "Next" button two times to advance to the Custom Setup dialog box:

Click on the dropdown to expand the RealTick for Microsoft Excel® setup options. Select "Entire feature will be installed on local hard drive"

Click on "Next" and "Install" on the following dialog box

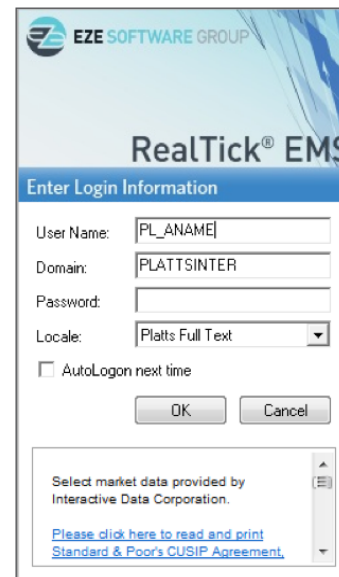


After the download is complete, an icon will be placed on your desktop.



Platts will provide you with a User Name, Domain and Password. The Locale will be **Platts Full Text**. The Domain will be noted in your welcome email. It may be one of the following: PLATTSASIA; PLATTSEMEA; PLATTSNAMER; PLATTSSAMER; PLATTSTRIAL

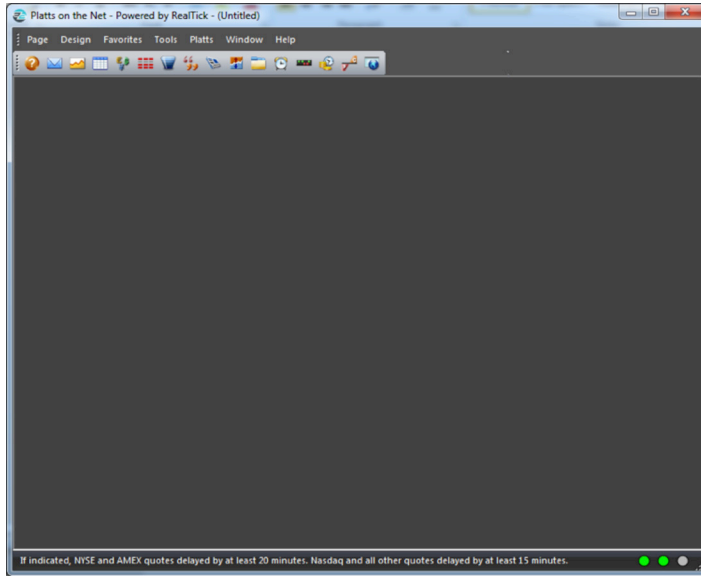
The sign on screen will appear on a gray background. It may take a few minutes to finish the connection the first time.



Enter the information and click OK. When a connection to the RealTick permissions server is completed, you will be prompted to change to a permanent password. Passwords are case sensitive.

**Note:** Platts does not have access to your password although we can reset it for you if necessary.

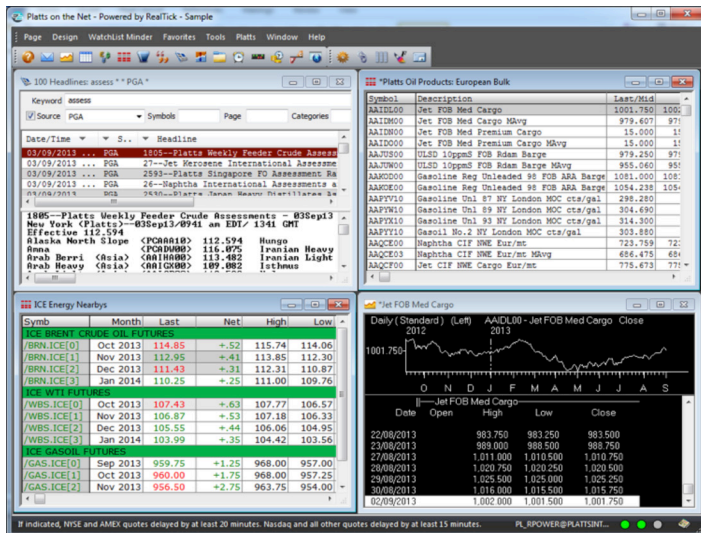
Once access is complete you will see a grey screen or with a menu bar and icons along the top or, if you have custom pages saved, your pages will show.



**NOTES:** If the program does not access to this point, there may be a connectivity issue with your company's firewalls or security rules. Please download the **Firewall document** from [www.platts.com](http://www.platts.com) > Subscriber's Support >Software & User Manuals and provide it to your IT Department. Platts Client Service will assist; please contact [support@platts.com](mailto:support@platts.com).

If you use Microsoft Excel with Platts on the Net, please refer to <http://www.platts.com/software-user-manuals> before using your Excel files. Alternatively, please contact your local Platts Client Service specialist or [support@platts.com](mailto:support@platts.com) for further assistance.

### Custom Desktop / Page



FOR MORE INFORMATION, PLEASE CONTACT THE PLATTS SALES OFFICE NEAREST YOU:

Web [www.platts.com](http://www.platts.com)  
E-mail [support@platts.com](mailto:support@platts.com)

NORTH AMERICA  
+1-800-PLATTS8 (toll-free)  
+1-212-904-3070 (direct)

EMEA  
+44-(0)20-7176-6111

LATIN AMERICA  
+54-11-4804-1890

ASIA-PACIFIC  
+65-6530-6430

RUSSIA  
+7-495-783-4141