

Platts on the Net

LME Set Up

London Metal Exchange (LME)

LME Exchange Data requires a different approach for MarketMinder setup. Platts has created several module views that can be easily brought onto a desktop.

To access the predefined LME pages, select **Page, Open**.

Predefined LME Exchange Summary Page

The screenshot displays a complex data interface with several tables. The top table lists various LME contracts with columns for Bid, Offer, and Last Price. Below it are sections for 'LME 3 Month Ring', 'LME Cash Ring', and 'LME 3 Month Ring Official', each containing detailed market data for different metals and contracts.

Use of Favorites to customize LME Exchange pages

The modules included in the predefined pages and others are also set up in the **FAVORITES** section to be easily copied onto your page view.

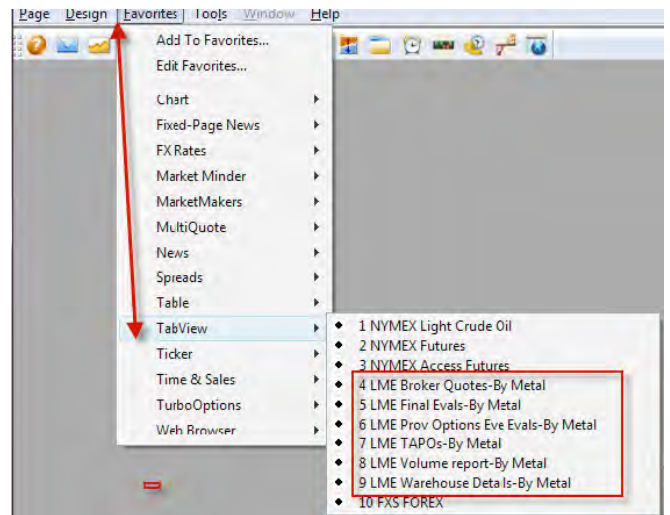
LME Exchange data modules are available under the **MarketMinder, MultiQuote** and **TabView** section of Favorites. Simply select and it will be placed on your desktop. Please save the page after the import if you want to attach this view to you desktop.

Favorites – MarketMinder Selections:



Contract	Last Price	Bid	Offer	Time	Bid/Ask	ATime	Ask Date	Trade Vol	Lot Vol	Quote	Condition
LME Ring Alum Alloy Fed 3M		216.00	216.00	18:01	2310.00 / 2320.00	18:01	2/16/2011				K2
LME Ring Aluminum Fed 3M	2504.00			18:00	2504.00 / 2505.00	18:00	2/16/2011	100	1253		K2
LME Ring Copper Fed 3M	2841.00			17:58	2841.00 / 2842.00	17:58	2/16/2011	10	250		K2
LME Ring Lead Fed 3M	2592.00			17:43	2592.00 / 2593.00	17:43	2/16/2011	25	35		K2
LME Ring Nickel Fed 3M	2850.00			17:48	2857.00 / 2860.00	17:48	2/16/2011	30	60		K2
LME Ring Tin Fed 3M	3250.00			17:56	3249.00 / 3250.00	17:56	2/16/2011	1	6		K2
LME Ring Zinc Fed 3M	2486.00			17:50	2486.00 / 2487.00	17:50	2/16/2011	52	108		K2

Favorites - MultiQuote Selections:



The **LME Composite Screen** is a snapshot of the Market.

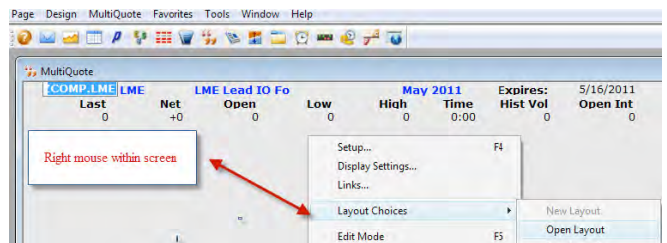
In the event that the screen does not populate when retrieved, do the following:

Place cursor on top of screen, right mouse and select LME Composite.mqt.
The screen will fill in. Please save to the desktop.

Select **Favorite > MultiQuote** for a snapshot of Warehouse Stocks.

Interoffice / Broker				Cash			
BTTime	Bid	Ask	ATime	BTTime	Bid	Ask	ATime
PB	0:00	00	0:00	16:44	2445.00	2450.00	16:44
ZN	21:01	2470.00	2480.00	21:01	MANF	18:50	2520.00
CU	21:00	9930.00	9955.00	21:00	MANF	16:56	9930.00
AL	21:00	2488.00	2498.00	21:00	MANF	17:00	2520.00
SN	0:00	00	0:00	17:00	20500.00	20500.00	16:59
NI	8:05	00	0:00	17:15	20400.00	20400.00	17:15
AA	0:00	00	0:00	13:41	2310.00	2320.00	13:41
NA	0:00	00	0:00	13:41	2480.00	2490.00	13:41

Warehouse Stocks				Warrants			
Symbol	In	Out	Total	Net	Live	Cancelled	Low
PB	75	325	297,250	-250	275,675	21,575	16.44
ZN	25	125	708,925	-100	705,275	3,650	18.50
CU	4,125	750	405,800	+3,375	392,225	13,575	16.56
AL	3,850	6,150	4,597,925	-2,300	4,313,725	284,200	17.00
SN	150	50	17,670	+100	16,760	910	16.59
NI	204	150	130,098	-150	125,268	4,830	17.15
AA	200	60	79,540	-60	79,440	100	13.41

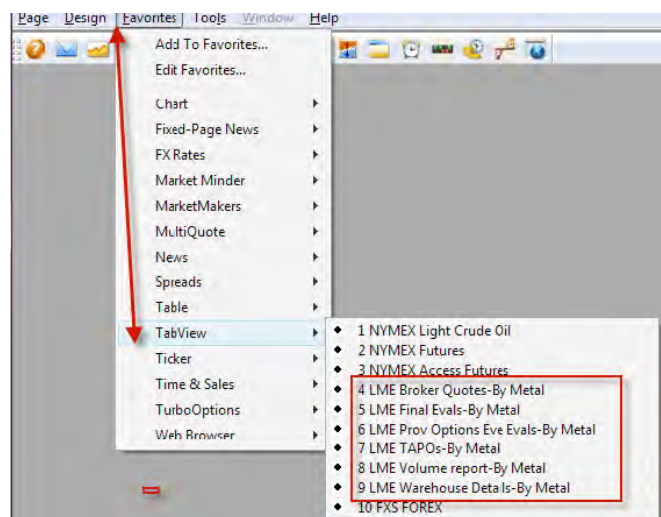


	In	Out	Total	Net	Live	Cancelled
PB	75	325	297,250	-250	275,675	21,575
ZN	25	125	708,925	-100	705,275	3,650
CU	4,125	750	405,800	+3,375	392,225	13,575
AL	3,850	6,150	4,597,925	-2,300	4,313,725	284,200
SN	150	50	17,670	+100	16,760	910
NI	204	150	130,098	-150	125,268	4,830
AA	200	60	79,540	-60	79,440	100

A more detailed view is available under the TabView section (below)

TabView pages are set up with tabs at the top indicating the different metals. Click on the tab to bring forward specific information.

Favorites - TabView:



TabView : LME BROKER QUOTES | ZN

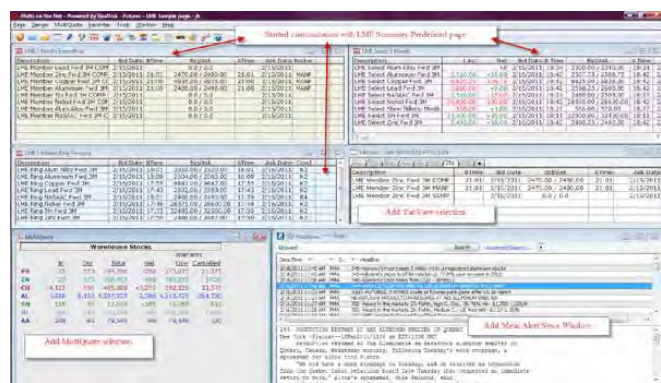
Description	RTime	Bid Date	Bid/Ask	ΔTime	Ask Date
LME Member Zinc Fwd 3M COMP	21:01	2/15/2011	2470.00 / 2480.00	21:01	2/15/2011
LME Member Zinc Fwd 3M MANSF	21:01	2/15/2011	2470.00 / 2480.00	21:01	2/15/2011
LME Member Zinc Fwd 3M SEMP		2/15/2011	0.0 / 0.0		2/15/2011

Example of TabView Warehouse Details Report:

TabView : WAREHOUSE DETAILS | LME

Description	Close	Open	In	Out	Moves	Warrens	Cancelled	Trade Date
LME NASSAC Ingotz Warehouse Stock Movements	26,600	26,600	0	0	0	0	0	2/16/2011
LME NASSAC Ingotz BALT Warehouse Stock Movements	8,800	8,800	0	0	0	0	0	2/16/2011
LME NASSAC Ingotz CHIC Warehouse Stock Movements	5,200	5,200	0	0	0	0	0	2/16/2011
LME NASSAC Ingotz DETR Warehouse Stock Movements	11,000	11,000	0	0	0	0	0	2/16/2011
LME NASSAC Ingotz LOUV Warehouse Stock Movements	0	0	0	0	0	0	0	2/16/2011
LME NASSAC Ingotz OWEN Warehouse Stock Movements	0	0	0	0	0	0	0	2/16/2011
LME NASSAC Ingotz STLO Warehouse Stock Movements	0	0	0	0	0	0	0	2/16/2011
LME NASSAC Lg Sow Warehouse Stock Movements	3,480	3,480	0	0	0	0	0	2/16/2011
LME NASSAC Lg Sow BALT Warehouse Stock Movements	3,320	3,320	0	0	0	0	0	2/16/2011
LME NASSAC Lg Sow CHIC Warehouse Stock Movements	160	160	0	0	0	0	0	2/16/2011
LME NASSAC Lg Sow DETR Warehouse Stock Movements	0	0	0	0	0	0	0	2/16/2011
LME NASSAC Lg Sow LOUV Warehouse Stock Movements	0	0	0	0	0	0	0	2/16/2011
LME NASSAC Lg Sow OWEN Warehouse Stock Movements	0	0	0	0	0	0	0	2/16/2011
LME NASSAC Lg Sow STLO Warehouse Stock Movements	0	0	0	0	0	0	0	2/16/2011
LME NASSAC Sm Sow Warehouse Stock Movements	39,240	39,240	0	0	0	0	0	2/16/2011
LME NASSAC Sm Sow BALT Warehouse Stock Movements	0	0	0	0	0	0	0	2/16/2011
LME NASSAC Sm Sow CHIC Warehouse Stock Movements	58,800	58,800	0	0	0	0	0	2/16/2011
LME NASSAC Sm Sow DETR Warehouse Stock Movements	22,800	22,800	0	0	0	0	0	2/16/2011
LME NASSAC Sm Sow LOUV Warehouse Stock Movements	1,380	1,380	0	0	0	0	0	2/16/2011
LME NASSAC Sm Sow OWEN Warehouse Stock Movements	0	0	0	0	0	0	0	2/16/2011
LME NASSAC Sm Sow STLO Warehouse Stock Movements	5,800	5,800	0	0	0	0	0	2/16/2011
LME NASSAC T-Bar Warehouse Stock Movements	7,760	7,760	0	0	0	0	0	2/16/2011
LME NASSAC T-Bar BALT Warehouse Stock Movements	3,360	3,360	0	0	0	0	0	2/16/2011
LME NASSAC T-Bar CHIC Warehouse Stock Movements	0	0	0	0	0	0	0	2/16/2011
LME NASSAC T-Bar DETR Warehouse Stock Movements	4,400	4,400	0	0	0	0	0	2/16/2011
LME NASSAC T-Bar LOUV Warehouse Stock Movements	0	0	0	0	0	0	0	2/16/2011
LME NASSAC T-Bar OWEN Warehouse Stock Movements	0	0	0	0	0	0	0	2/16/2011
LME NASSAC T-Bar STLO Warehouse Stock Movements	0	0	0	0	0	0	0	2/16/2011
LME NASSAC Tot Warehouse Stock Movements	137,080	137,080	0	0	0	0	0	2/16/2011
LME NASSAC Tot BALT Warehouse Stock Movements	15,640	15,640	0	0	0	0	0	2/16/2011
LME NASSAC Tot CHIC Warehouse Stock Movements	78,800	78,800	0	0	0	0	0	2/16/2011
LME NASSAC Tot DETR Warehouse Stock Movements	37,400	37,400	0	0	0	0	0	2/16/2011
LME NASSAC Tot LOUV Warehouse Stock Movements	1,380	1,380	0	0	0	0	0	2/16/2011
LME NASSAC Tot OWEN Warehouse Stock Movements	0	0	0	0	0	0	0	2/16/2011
LME NASSAC Tot STLO Warehouse Stock Movements	5,800	5,800	0	0	0	0	0	2/16/2011

Customized desktops can be set up using a combination of retrieval methods, including setting up the Metal Alert News service, as outlined in the Alert Service instructions. As with most Windows applications, **save the desktop** before making changes so the changes can be dismissed if you do not like the results.



NORTH AMERICA

New York

2 Penn Plaza, 25th Floor
New York, NY 10121-2298, USA
P: +1-800-PLATTS8 (toll-free)
P: +1-212-904-3070 (direct)

Boston

225 Franklin Street, 14th Floor
Boston, MA 02110 USA
P: +1 800-752-8878
P: +1 617-530-8300

Denver

1800 Larimer Street, Suite 2000
Denver, CO 80202, USA
P: +1-720-264-6600

Hightstown

148 Princeton-Hightstown Road
Hightstown, NJ 80021, USA
P: +1-800-PLATTS8 (toll-free)

Houston

Heritage Plaza
1111 Bagby Street, Suite 2200
Houston, TX 77002, USA
P: +1-800-PLATTS8 (toll-free)

Pittsburgh

424 South 27th Street, Suite 306
Pittsburgh, PA 15203, USA
P: +1-412-431-4370

Washington, D.C.

1200 G Street NW, Suite 1000
Washington, DC 20005, USA
P: +1-212-904-3070

LATIN AMERICA

Buenos Aires

Tte. Gral. Juan D. Perón 346, 6th Floor
(C1038AAH) Buenos Aires, Argentina
P: +54-11-4121-4810

São Paulo

Av Brigadeiro Faria Lima
201 21st floor
São Paulo – SP Brasil – 05626-100 –
Brazil P: +55-11-3818-4100

EUROPE, MIDDLE EAST AND AFRICA

London

20 Canada Square
12th Floor, Canary Wharf
London E14 5LH, UK
P: +44-20-7176-6111

Dubai

DIFC, The Gate Precinct
Building 1, Level 05
P.O. Box 506650
Dubai, UAE
P: +971-4-372-7100

Moscow

Business Centter
Mokhovaya
4/7 Vozdvizhenka Street
Building 2, 7th Floor, 125009
Moscow,
Russia
P: +7-495-783-4141

Stavanger

Øvre Holmegate 1
4006 Stavanger

ASIA-PACIFIC

Singapore

12 Marina Boulevard
#23-01 Marina Bay
Financial Centre Tower 3
Singapore 018982
P: +65-6532-2800

Beijing

Suite 1601, 16/F Tower D Beijing CITC
A6 Jianguo Menwai Avenue
Chaoyang District
Beijing 100022, China
P: +86-10-6569-2929

Hong Kong

Unit 6901, Level 69 International
Commerce Centre 1 Austin Road West
Kowloon, Hong Kong
P: +852-2841-1035

Shanghai

33/F Shanghai Plaza
138 Huaihai Road (M)
Shanghai 200021, China
P: +86-21-5110-5488

Tokyo

Marunouchi Kitaguchi Building,
28th Floor
1-6-5 Marunouchi
Tokyo 100-0005, Japan
P: +81-3-4550-8300

Melbourne

Level 45, 120 Collins Street
Melbourne
VIC 3000, Australia
P: +61-3-9631-2000