

Platts on the Net

History Database

Add Platts Database to Alert Services

In addition to working within Platts Alert Services to keep abreast of the latest global news and events, daily market assessments are created by Platts editorial teams. These assessments are available in each Alert Service in text news format. By referring to the Page Directory, you will be able to pinpoint specific assessment pages you wish to track and set them up on a desktop.

As an example page 6 of PGA (Platts Global Alert) will populate daily after the Editors assess the market, in this case Singapore. To use Mogas 97 unleaded as an example the assessment indicated = 110.03 /l and 110.07 /h.

Adding Platts Database service, it is easy to retrieve historic information using the example of Singapore Mogas 97. Platts assigns a symbol (also known as code) to each assessment in the database. While there are many avenues to retrieve symbol information, using the Platts Symbol Tree within POTN is easy and effective. To access the Symbol Tree, select **Favorites > MarketMinder > Platts Symbol Tree**.

On the left side of the screen, open up the tree by selecting each level until the assessments you need appear on the right side. The display on the right will display all assessments within the category. Scroll down the description field until you find the assessment you need.

Note: The table can be sorted by setting the cursor on the field name at the top of a column. Right mouse click will display a pop-up with options for the table.

In the example, Mogas 97 shows the current assessment with date. It matches the assessment on the example PGA Page 6 above.

6--Platts Singapore Products Assessments - 16Feb11
 Singapore (Platts)--16Feb11/0603 am EST/ 1103 GMT

Product	Price	Price	Price
Mogas 97 unl	-110.03-110.07-		15.30/15.34 *
Mogas 95 unl	-108.61-108.65-		13.88/13.92 *
Mogas 92 unl	-106.29-106.33-		11.56/11.60 *
Mogas 92 unl		-106.33-106.37-	-0.06/-0.02 **
Naphtha	-95.24-95.28-		-94.71-94.75-
Spot Phynaphtha	-94.66-94.70-		-0.10/0.00
Kero	-117.74-117.78-		-117.69-117.73-
Gasoil 10ppm	-118.26-118.30-		2.38/2.42
Gasoil 50ppm	-117.81-117.85-		1.93/1.97
Gasoil 0.05% S	-117.04-117.08-		1.16/1.20
Gasoil 0.25% S	-116.50-116.54-		0.62/0.66
Gasoil Reg 0.5%	-115.65-115.69-		-0.23/-0.19

*Diff to Naphtha MOPS strip **Diff to Mogas 92 unl MOPS strip
 ***Diff to Gasoil Reg 0.5% MOPS Strip
 Spore Fuel/LSWR: p42. Arab Gulf/Japan Products: p43. Spore paper quotes: p209

Platts Oil Products Singapore

Symbol	Description	Last/Unit	High	Low	Date
AAJF00	Cin Demurrage NR FOB Spore MArg	14175.00	0	0	1/31/2011
AAJG00	Diry Demurrage NR FOB Spore	25000.00	0	0	2/14/2011
AAJH00	Diry Demurrage NR FOB Spore MArg	17800.00	0	0	2/14/2011
AAJY00	Exp Spot Spd Spore 1/Blk 10V	84.86	84.70	84.64	2/14/2011
AAJY02	Exp Spot Spd Spore 1/Blk 10V MArg	84.74	84.70	84.74	2/14/2011
AAJZ00	Gasoil 0.5 S Pure Crpg	115.87	115.84	115.84	2/14/2011
AAJZ02	Gasoil 0.5 Pure Crpg Ppr LstMo	115.92	115.84	115.80	2/14/2011
AAJZ05	Gasoil 0.5 Pure Crpg Ppr 2ndMo	114.19	114.21	114.11	2/14/2011
AAJZ08	Gasoil 0.5 Pure Crpg Spd V Mops	-10	-0.09	-10	2/14/2011
AAJZ10	Gasoil 0.5 Pure Crpg Spd V Mops	-20	-1.9	-20	2/14/2011
AAJZ12	Gasoil 10PPM FOB Spore 4/Blk	114.28	114.30	114.26	2/14/2011
AAJZ15	Gasoil 10PPM FOB Spore 4/Blk MArg	110.69	110.71	110.67	2/14/2011
AAJZ18	Del 2M Spore Crpg FOB	116.65	116.64	116.65	2/14/2011
AAJZ20	Del 2M Spore SpreadMOPS	.64	.66	.62	2/14/2011
AAJZ22	Del 10 PPM Crp Australia	122.67	122.69	122.65	2/14/2011
AAJZ25	Del 10 PPM Crp Australia MArg	115.97	115.99	115.95	2/14/2011
AAJZ28	Del 10PPM vs Del 0.5 MOPS Strip	2.40	2.42	2.38	2/14/2011
AAJZ30	Del 50ppm FOB Spore Crp 4/Blk	117.53	117.55	117.51	2/14/2011
AAJZ32	Del 50ppm FOB Spore Crp 4/Blk MArg	115.15	115.16	115.14	2/14/2011
AAJZ35	Del 50ppm vs 0.5A FOB Spore	1.95	1.97	1.93	2/14/2011
AAJZ38	Del 50ppm vs 0.5A FOB Spore MArg	1.59	1.61	1.57	2/14/2011
AAJZ40	Del 50ppm vs 0.5A FOB Spore MArg	117.76	117.78	117.74	2/14/2011
AAJZ42	Del 50ppm vs 0.5A FOB Spore MArg	117.71	117.73	117.69	2/14/2011
AAJZ45	Del 50ppm vs 0.5A FOB Spore MArg	117.73	117.74	117.71	2/14/2011
AAJZ48	Del 50ppm vs 0.5A FOB Spore MArg	.09	.07	.09	2/14/2011
AAJZ50	Del 50ppm vs 0.5A FOB Spore MArg	-11	-0.09	-11	2/14/2011
AAJZ52	MOPS Gasoil 0.5A Strip 1/Blk	115.85	115.90	115.84	2/14/2011
AAJZ55	MOPS Gasoil 0.5A Strip 1/Blk MArg	105.20	105.20	105.20	2/14/2011
AAJZ58	MOPS Mero Strip 4/Blk	117.71	117.73	117.69	2/14/2011
AAJZ60	MOPS Mero Strip 4/Blk MArg	110.50	110.52	110.48	2/14/2011
AAJZ62	MOPS Naphtha Strip 1/Blk	84.73	84.75	84.71	2/14/2011
AAJZ65	MOPS Naphtha Strip 1/Blk MArg	84.48	84.50	84.46	2/14/2011
AAJZ68	MOPS Naphtha Strip 1/Blk MArg	84.50	84.50	84.50	2/14/2011
AAJZ70	MOPS Naphtha Strip 1/Blk MArg	84.20	84.10	83.40	2/14/2011
AAJZ72	Mogas 92 Del Singapore Cargo	104.31	104.33	104.29	2/14/2011
AAJZ75	Mogas 95 Del Singapore Cargo	109.63	109.65	109.61	2/14/2011
AAJZ78	Mogas 97 Del Singapore Cargo	110.03	110.07	110.00	2/14/2011
AAJZ80	Naphtha 0.5 Pure FOB Spd V Mops 10V	.28	.33	.23	1/31/2011
AAJZ82	Naphtha Singapore Cargo	95.24	95.24	95.24	2/14/2011
AAJZ85	Naphtha Spore Crpg Ppr 1Mo	84.73	84.73	84.73	2/14/2011
AAJZ88	Naphtha Spore Crpg Ppr 2Mo	84.55	84.57	84.53	2/14/2011
AAJZ90	Naphtha Spore Crpg Spd V MOPS	-0.55	-0.50	-1.0	2/14/2011
AAJZ92	Spore Gasoil 0.5A Crpg	117.04	117.04	117.04	2/14/2011

Tables and Charts can be easily created with a **drag/drop** function once the assessment is identified in the table.

Place the cursor over the target symbol and hold the left mouse down until the arrow turns into a circle with a line. Continue to hold the mouse down and drag it up to the table or chart icon.

As you hover over the chart or table icon, a drop-down will appear with pre-defined templates or Favorites. Slide the cursor over the desired template and release. The chart or table will appear on the desktop.

You can create a table by repeating the same steps above but substituting the Table icon for the Chart icon.

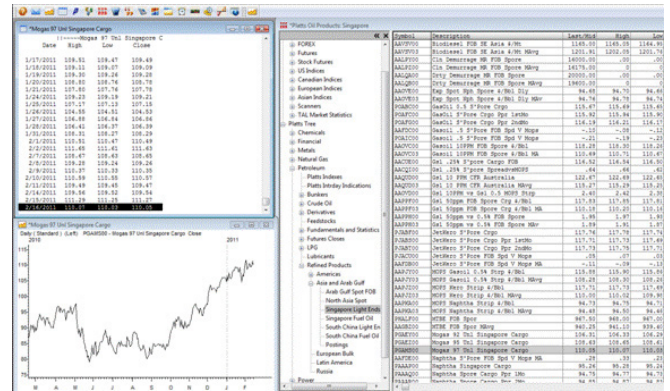
With two quick steps we have set up a table and a chart with historic information on the Mogas 97 assessment.

If you use this type of instant view often, it is suggested that you save this view as a desktop/page. Once saved, it is easy to drag any symbol over to a chart or table, which will then replace the data for a new view. If you would like to add a second symbol to the chart or table, hold the **Ctrl** key down while you drag the symbol over.

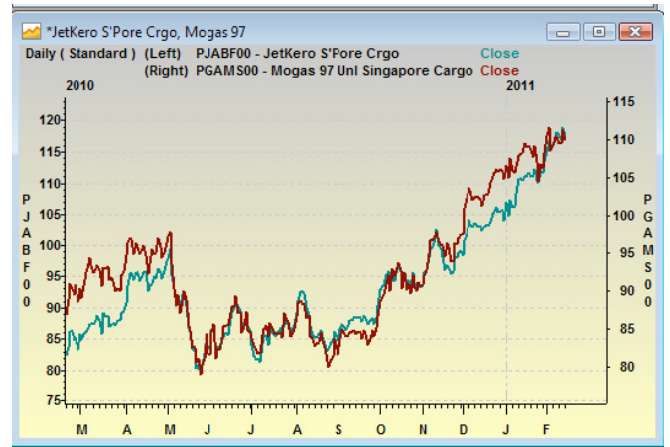
The examples below are basic. It is possible to add dimension and customize the charts and tables with color, line style change, time period displayed, overlaid studies, etc.

To activate the **customization window**, right mouse within the desired pane and select **Display and Analysis**. If you would like to re-use this format on another desktop, save it as a Favorite. To do this, select Favorites from the top bar and select Add To and add a name. This will save the format. When on a new desktop retrieve the saved format by selecting **Favorites > Charts** and the named format.

To customize a table, use the same steps as a chart. You will note the Display and Analysis window is very similar.



Simple Customized Chart



Simple Customized Table

*Mogas 97 Unl Singapore Cargo			
Date	High	Low	Close
1/19/2011	109.30	109.26	109.28
1/20/2011	108.80	108.76	108.78
1/21/2011	107.80	107.76	107.78
1/24/2011	109.23	109.19	109.21
1/25/2011	107.17	107.13	107.15
1/26/2011	104.55	104.51	104.53
1/27/2011	106.88	106.84	106.86
1/28/2011	106.41	106.37	106.39
1/31/2011	108.31	108.27	108.29
2/1/2011	110.51	110.47	110.49
2/2/2011	111.65	111.61	111.63
2/7/2011	108.67	108.63	108.65
2/8/2011	109.28	109.24	109.26
2/9/2011	110.37	110.33	110.35
2/10/2011	110.59	110.55	110.57
2/11/2011	109.49	109.45	109.47
2/14/2011	109.56	109.52	109.54
2/15/2011	111.29	111.25	111.27
2/16/2011	110.07	110.03	110.05

NORTH AMERICA

New York

2 Penn Plaza, 25th Floor
New York, NY 10121-2298, USA
P: +1-800-PLATTS8 (toll-free)
P: +1-212-904-3070 (direct)

Boston

225 Franklin Street, 14th Floor
Boston, MA 02110 USA
P: +1 800-752-8878
P: +1 617-530-8300

Denver

1800 Larimer Street, Suite 2000
Denver, CO 80202, USA
P: +1-720-264-6600

Hightstown

148 Princeton-Hightstown Road
Hightstown, NJ 80021, USA
P: +1-800-PLATTS8 (toll-free)

Houston

Heritage Plaza
1111 Bagby Street, Suite 2200
Houston, TX 77002, USA
P: +1-800-PLATTS8 (toll-free)

Pittsburgh

424 South 27th Street, Suite 306
Pittsburgh, PA 15203, USA
P: +1-412-431-4370

Washington, D.C.

1200 G Street NW, Suite 1000
Washington, DC 20005, USA
P: +1-212-904-3070

LATIN AMERICA

Buenos Aires

Tte. Gral. Juan D. Perón 346, 6th Floor
(C1038AAH) Buenos Aires, Argentina
P: +54-11-4121-4810

São Paulo

Av Brigadeiro Faria Lima
201 21st floor
São Paulo – SP Brasil – 05626-100 –
Brazil P: +55-11-3818-4100

EUROPE, MIDDLE EAST AND AFRICA

London

20 Canada Square
12th Floor, Canary Wharf
London E14 5LH, UK
P: +44-20-7176-6111

Dubai

DIFC, The Gate Precinct
Building 1, Level 05
P.O. Box 506650
Dubai, UAE
P: +971-4-372-7100

Moscow

Business Centter
Mokhovaya
4/7 Vozdvizhenka Street
Building 2, 7th Floor, 125009
Moscow,
Russia
P: +7-495-783-4141

Stavanger

Øvre Holmegate 1
4006 Stavanger

Norway

P: +47-51-89-06-66

ASIA-PACIFIC

Singapore

12 Marina Boulevard
#23-01 Marina Bay
Financial Centre Tower 3
Singapore 018982
P: +65-6532-2800

Beijing

Suite 1601, 16/F Tower D Beijing CITC
A6 Jianguo Menwai Avenue
Chaoyang District
Beijing 100022, China
P: +86-10-6569-2929

Hong Kong

Unit 6901, Level 69 International
Commerce Centre 1 Austin Road West
Kowloon, Hong Kong
P: +852-2841-1035

Shanghai

33/F Shanghai Plaza
138 Huaihai Road (M)
Shanghai 200021, China
P: +86-21-5110-5488

Tokyo

Marunouchi Kitaguchi Building,
28th Floor
1-6-5 Marunouchi
Tokyo 100-0005, Japan
P: +81-3-4550-8300

Melbourne

Level 45, 120 Collins Street
Melbourne
VIC 3000, Australia
P: +61-3-9631-2000