



# IHS Fairplay AISLive: Release Notes Version 7





## AISSLive: New Release March 2013

---

Dear Valued Subscriber,

We have spent the last year making significant improvements to the navigation, usability and features in AISSLive and appreciate your patience. We have heard your feedback and listened. We have taken your suggestions on board and are now ready to unveil the newest version of AISSLive. Version 7 contains some great enhancements to the service and performance with new features we trust you will find valuable.

We are committed to constantly improving AISSLive and are proud of the great enhancements that version 7 will provide to our subscribers.

Enjoy and please keep the suggestions coming.

Thank you

IHS Fairplay Product Management Team

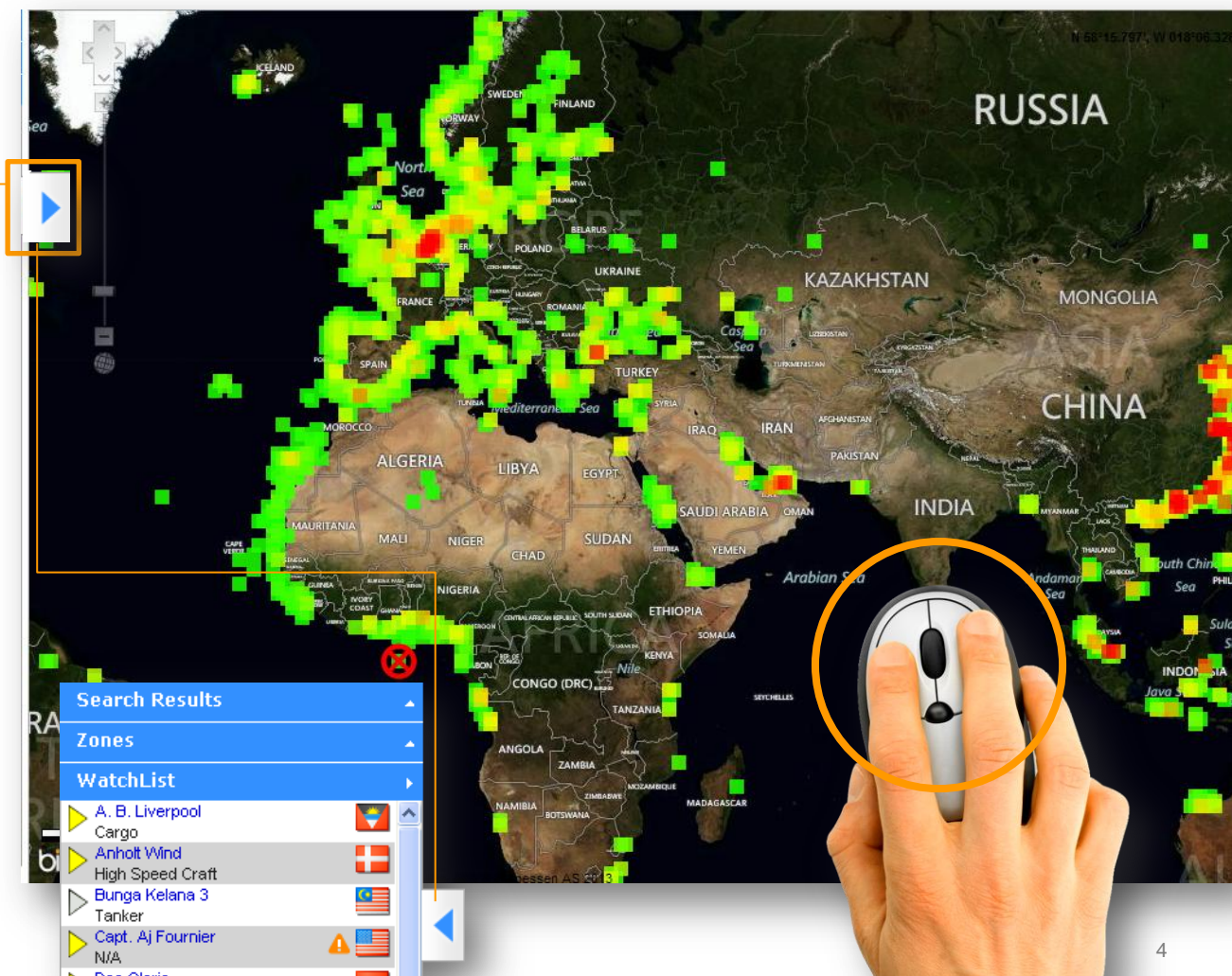


# AISLive: Summary of Enhancements: Version 7

Navigation	Page No.
Changes to Map Navigation	4
Updated Search Panel	5
Ship/Port Details Pop-up	6
Data	
Verified Ship and Ports Data	7
Services	
Ship Track History	8
Distance Tables (Module)	9-10
Ship Watch Service	11
Ship Watch & Port Callings Quotas	12
Adding Ships to Ship Watch	13
Alerts Admin Screen	14
Daily Noon Report & Improved Data Grid View	15
Help Centre	17
Contact us	19

# Navigation: Changes to Map Navigation

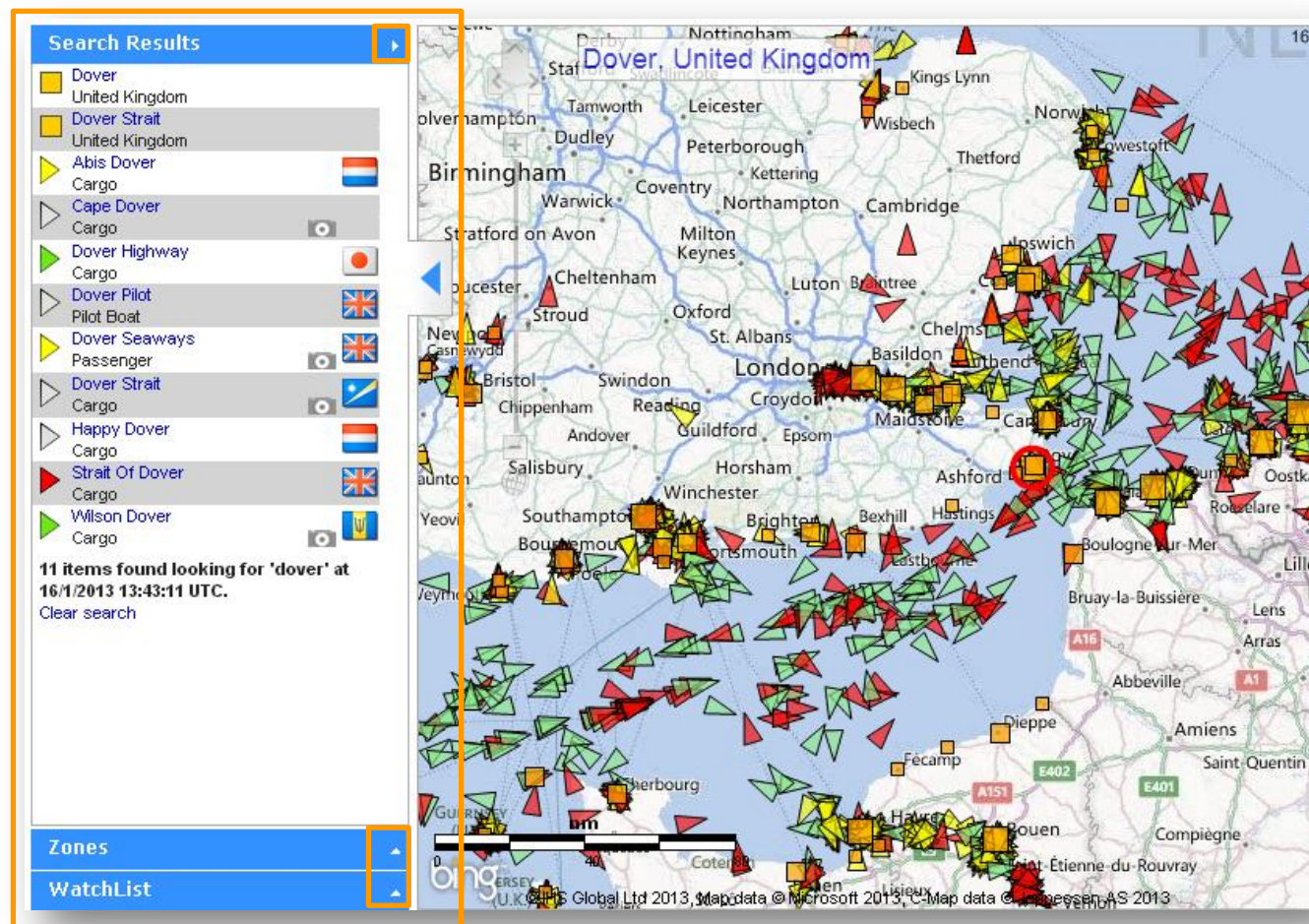
- New **arrow** button added to maximise map  
*Click arrow to open/close panel*
- Use the **mouse wheel** to navigate through various levels of zoom quickly
- Simply **drag** the map to move the map around quickly and with ease.
- **Click** on the map to display details panel for the nearest ship or port
- Improved performance when displaying Bing Maps and satellite imagery





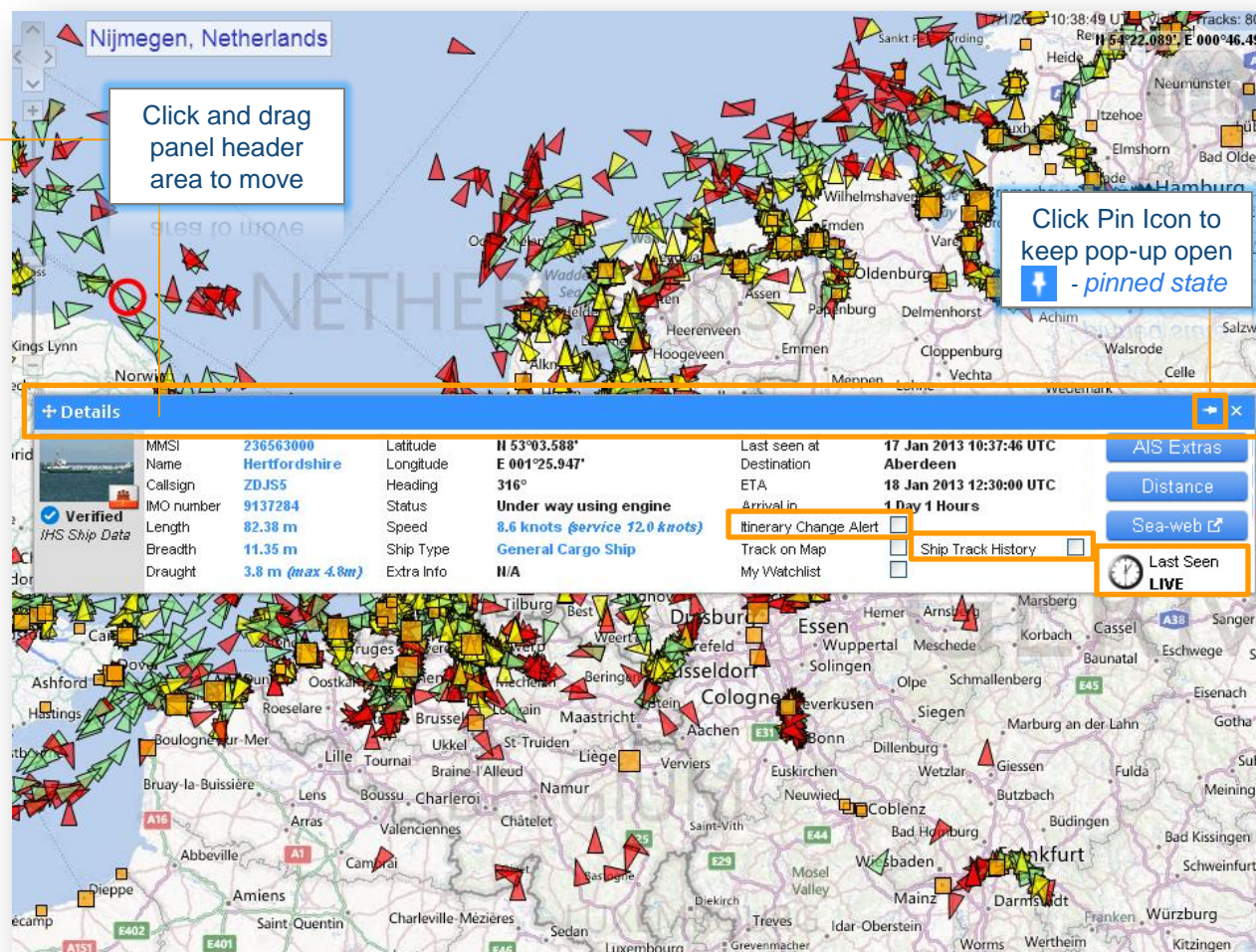
# Navigation: Updated Search Panels

- Collapse/expand left panel allows you to display each section one at a time.
- Click on the required panel header to open:  
[Search Results](#)  
[Zones](#)  
[WatchList](#)



# Navigation: Details Pop-up

- The Details pop-up is now **moveable** and can be placed anywhere on the screen.
- Click on the **pin icons** to keep the Details pop-up open/auto hidden over the map.
- New Last Seen clock added to clearly indicate the age of the message.
- Additional Itinerary Change Alert tells you when an ETA or destination changes.
- New 72 hour Ship Track History appears directly on the map with enhanced interactive version in **AIS Extras**.













# AISLive Data: Verified Ship Data

## Message as displayed in AISLive Version 6.0

	MMSI	<b>235050393</b>	Latitude	<b>N 50°37.263'</b>	Last seen at	<b>17/1/2013 11:32:41 UTC</b>	
	Name	<b>Csav Rio Grande</b>	Longitude	<b>W 001°02.684'</b>	Destination	<b>For Orders</b>	
	Callsign	<b>MIEL</b>	Heading	<b>229°</b>	ETA	<b>12/1/2013 19:00:00 UTC</b>	
	IMO number	<b>9308807</b>	Length	<b>182 m</b>	Ship Type	<b>Cargo</b>	
	Status	<b>Anchored</b>	Beam	<b>31 m</b>	Extra Info		
	Speed	<b>0.1 knots</b>	Draught	<b>7.9 m</b>	<input type="checkbox"/> Track this ship	<input type="checkbox"/> WatchList	

## Message as displayed in AISLive Version 7.0 - NEW

Details							
	MMSI	<b>235050393</b>	Latitude	<b>N 50°37.263'</b>	Last seen at	<b>17 Jan 2013 11:45:44 UTC</b>	   
	Name	<b>CSAV Rio Grande</b>	Longitude	<b>W 001°02.683'</b>	Destination	<b>For Orders</b>	
	Callsign	<b>MIEL</b>	Heading	<b>233°</b>	ETA	<b>12 Jan 2013 19:00:00 UTC</b>	
	IMO number	<b>9308807</b>	Status	<b>Anchored</b>	Arrival in	<b>N/A</b>	
	Length	<b>182.80 m</b>	Speed	<b>0.1 knots (service 20.0 knots)</b>	Itinerary Change Alert	<input type="checkbox"/>	
	Breadth	<b>31.50 m</b>	Ship Type	<b>Vehicles Carrier</b>	Track on Map	<input type="checkbox"/>	
	Draught	<b>7.9 m (max 9.0m)</b>	Extra Info	<b>N/A</b>	My Watchlist	<input type="checkbox"/>	

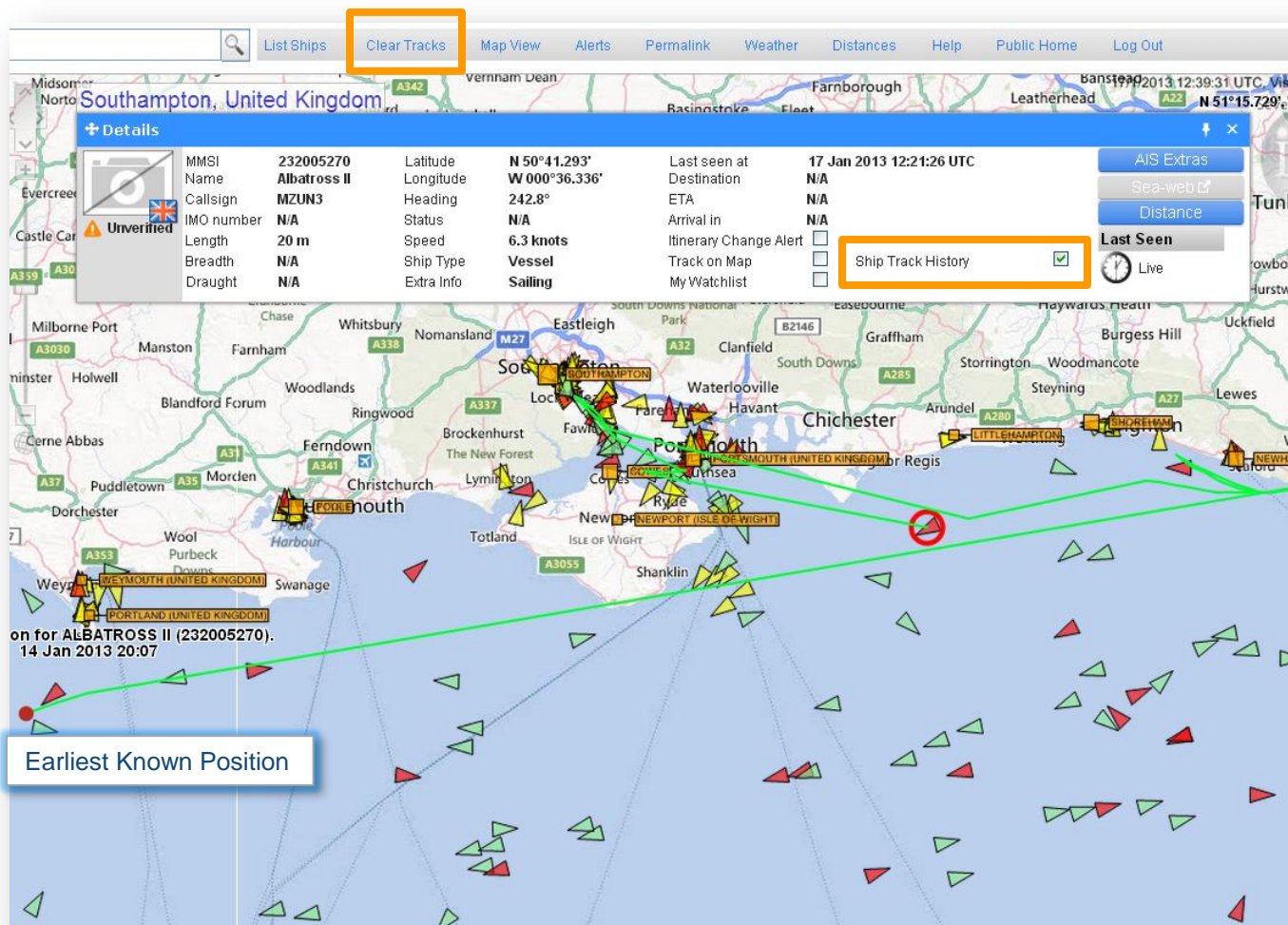
The verified data is shown in **blue** in the AIS message as shown above. This includes:-  
 LR/IMO Number, MMSI, Name, Callsign, Length, Breadth, Draught, Speed & Ship Type.

▪ Users can enjoy **verified data**. Using our ships and ports databases we have enhanced the data displayed with IHS Ship/port data to supply more accurate and complete information.

▪ Improvements in layout and format of information provide a better user experience and allow you to perform routine tasks more efficiently.

# Services: Ship Track History

- By clicking on **Ship Track History** in the Details pop-up, the real time position of the ship appears directly on the map.
- The **Ship Track History** holds movements up to 72 hours old.
- Multiple ship tracks can be displayed on the map.
- Select **Clear Tracks** from the main menu to clear all ship tracks on the map.





# Services: Distance Tables (Module)

- The new Distance Tables tool enables users to calculate an accurate time of arrival to verify that provided in the AIS message (input by the crew)

- Users can link to the Distance tables by either the menu link or by clicking on the Distance button on the Ship Details pop-up.

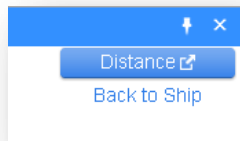


The screenshot displays the IHS web interface. At the top, a navigation bar includes links: List Ships, Clear Tracks, Map View, Alerts, Permalink, Weather, **Distances** (highlighted with an orange box), Help, Public Home, and Log Out. Below this, a 'Details' pop-up window for the ship 'Charleston Express' is shown. The ship's details include MMSI (367168640), Name (Charleston Express), Callsign (WDD6126), IMO number (9243162), Length (243.35 m), Breadth (32.20 m), Draught (9.1 m), Latitude (N 49°32.311'), Longitude (W 003°44.210'), Heading (68°), Status (Under way using engine), Speed (18.7 knots), and Ship Type (Container Ship). On the right side of the pop-up, there are buttons for 'AIS Extras', 'Sea-web', and 'Distance' (highlighted with an orange box). Below the 'Distance' button is a 'Last Seen' section with a clock icon and the word 'Live'. A second, larger 'Details' pop-up is shown below the first, titled 'Nautical Distances' and 'Provided by Veson'. It displays 'Start Position: N 49°32.311' W 003°44.210'', 'Speed: 18.7', and 'Destination: Antwerp'. A text box labeled 'Links to Veson Distance Tables' points to the 'Distance' button in this pop-up. In the top right corner of this pop-up, there are buttons for 'Distance' and 'Back to Ship'.

\* The distance tables function is only available to subscribers of the module

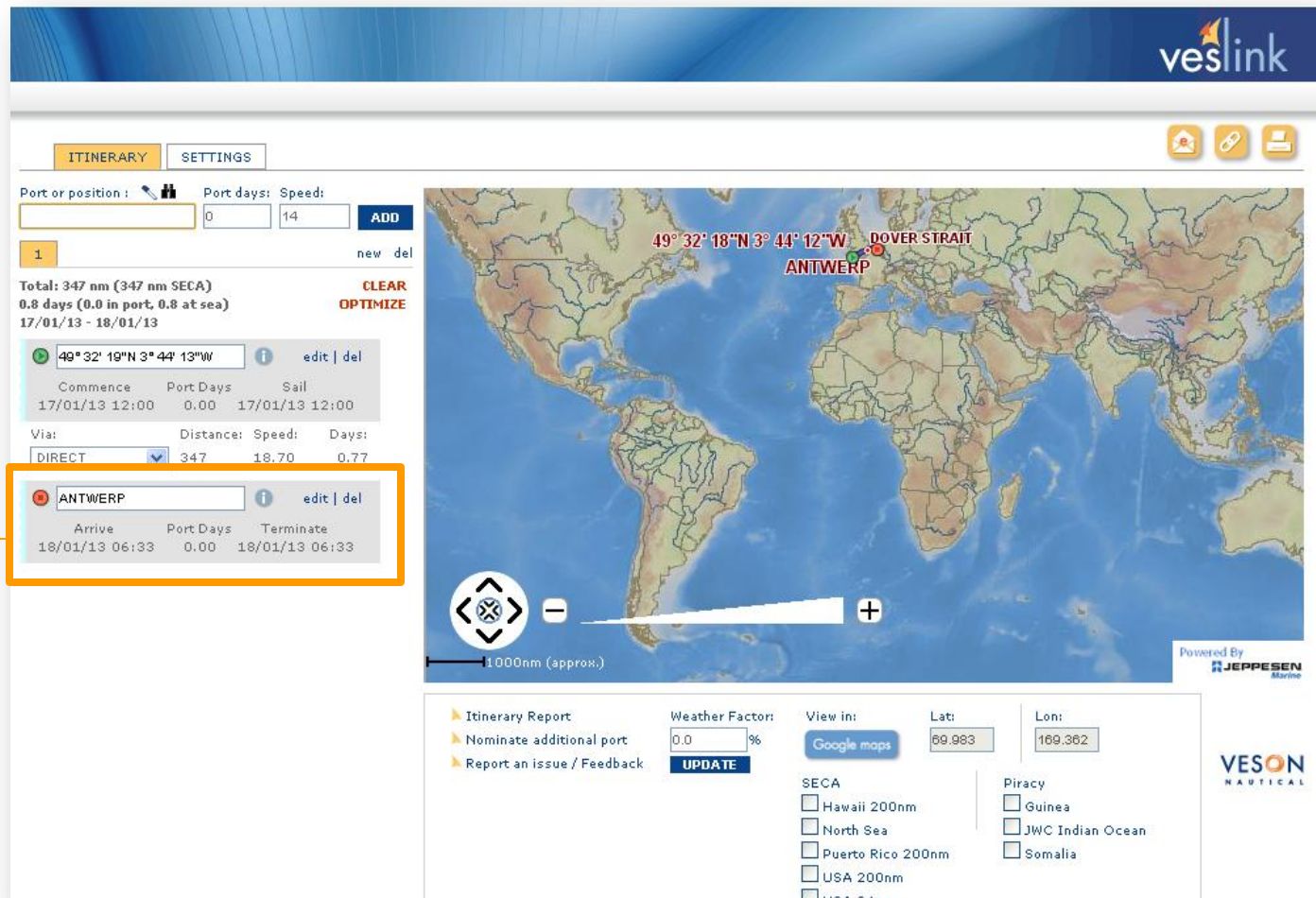
# Services: Distance Table (Module)

- The Distance button on the Distance Details pop-up opens the distance tables.



- The system will work out the estimated time of arrival using the ships reported destination, current position and speed.

\* For detailed information on how to use the service please go to the Help Centre on AISLive.



**ITINERARY** | **SETTINGS**

Port or position :  Port days:  Speed:  **ADD**

1 new del

Total: 347 nm (347 nm SECA)  
0.8 days (0.0 in port, 0.8 at sea)  
17/01/13 - 18/01/13 CLEAR OPTIMIZE

Commence	Port Days	Sail
17/01/13 12:00	0.00	17/01/13 12:00

Via:  Distance:  Speed:  Days:

**ANTWERP** edit | del

Arrive	Port Days	Terminate
18/01/13 06:33	0.00	18/01/13 06:33

Weather Factor:  % **UPDATE**

View in: **Google maps**

Lat:  Lon:

SECA

- ☐ Hawaii 200nm
- ☐ North Sea
- ☐ Puerto Rico 200nm
- ☐ USA 200nm
- ☐ USA 240nm

Piracy

- ☐ Guinea
- ☐ JWC Indian Ocean
- ☐ Somalia

Powered By **JEPPESEN** Marine

**VESON** NAUTICAL

## Services: Ship Watch (Alerts and WatchList)

The Ship Watch service has been improved and now includes:


- **WatchList**  
Now available to **ALL users**.  
*Existing Plus users receive a higher quota.*
- **Itinerary Change Alert - NEW**  
If the ship changes destination or estimated time of arrival an email is sent automatically.
- **Alert Service Maintenance**  
Combined alert allowance for AISLive alert services and WatchList. The quotas on alerts are now maintained by the WatchList and are more easily managed.







## Services: Adding Ships to Ship Watch



**Verified**  
IHS Ship Data

MMSI	304070991	Latitude	11 51°22.207'	Last seen at	12 Dec 2012 15:28:35 UTC
Name	Bellini	Longitude	E 003°44.899'	Destination	Oostende
Callsign	V2AS2	Heading	False	ETA	12 Dec 2012 18:00:00 UTC
IMO number	9157014	Status	Under way using engine	Arrival in	2 Hours 31 Minutes
Length	93.97 m	Speed	15.4 knots (svc 13.0 knots)	Itinerary Change Alert	<input checked="" type="checkbox"/>
Breadth	12.50 m	Ship Type	Chemical Products Tanker	Track on Map	<input type="checkbox"/>
Draught	4.0 m (max 4.7m)	Extra Info	N/A	My Watchlist	<input checked="" type="checkbox"/>

AIS Extras

Sea-web

Distance

Last Seen

Live

- To add ships tick:  
My WatchList **or** Itinerary Change Alert.  
All ships will be added to the WatchList and quota
- When adding ships to the Alert Zones these will also be added to the WatchList and become part of the WatchList quota

Search Results

Zones

WatchList

Cargo		
Azalea		
Tanker		
Bellini		
Tanker		
Bereket		
Cargo		
City Of Mumbai		
Cargo		
Courage		
Tanker		
Flanders Tenacity		
Tanker		
Gdf Suez Global Energy		



## Services: Alerts Admin Screen

### 3 New Alert Admin Tabs

#### Port Arrivals Alerts:

(For Plus users only)

Plus users can now see a list of all the port arrival alerts set up and can amend/delete the alert as required including change of email address.

#### Itinerary Change Alerts:

All users can see a list of all Itinerary Change Alerts set up and change the email address the alert will be sent to.

#### Daily Noon Reports Alerts:

To start receiving the reports click on *Activate noon report*. Users can then select the email address that the noon report will be sent too. To stop the report click on *Deactivate*.

Main Menu – Alerts Link

Clear Tracks Map View **Alerts** Permalink Weather Distances Help Public Home Log Out

Zone Entry Alerts Port Arrival Alerts Itinerary Change Alerts Daily Noon Report

Activate Noon Report

Email Address	Action
aislive@aislive.com	Edit Deactivate

### WatchList Ships

Number of Ships: 49

NAME	RECEIVED(UTC)	MMSI	IMO	POSITION	DISTANCE	AVGSpeed	DESTINATION
AB LIVERPOOL	16 Jan 2013 at 16:29	304010873	9125683	51°00'N, 002°10'E	0.00	0.00	DUNKIRK
ANHOLT WIND	16 Jan 2013 at 16:27	219016873	9657557	56°24'N, 010°55'E	0.00	0.00	ANHOLT V
BUNGA KELANA 3	09 Jan 2013 at 09:16	533411000	9178331	14°00'N, 060°27'E	0.00	0.00	RICHARD
CAPT. AJ FOURNIER	17 Jan 2013 at 16:29	367091750	11	40°38'N, 074°10'E	0.00	0.00	NEWARK I
DEO GLORIA	16 Jan 2013 at 16:29	245488000	7711074	51°26'N, 003°36'E	7.12	7.18	SLIJKGAT
ETAGAS	15 Jan 2013 at 04:16	306131000	8712570	01°22'N, 104°25'E	0.00	0.00	JIP NIT
FEI XIONG 3	17 Jan 2013 at 16:29	412355140	134296704	31°49'N, 120°54'E	0.00	0.00	YANGSHA
FUGRO ADVENTURER	14 Jan 2013 at 01:40	352509000	9261152	25°55'N, 051°35'E	0.00	0.00	AS-H
GAS ONE	16 Jan 2013 at 16:25	353230000	9527001	31°34'N, 121°17'E	0.00	0.00	CN.CJK
GASCHEM ARCTIC	08 Jan 2013 at 14:57	636091782	9371672	05°49'N, 080°16'E	0.00	0.00	ANYER
GLOBAL IROQUOIS	24 Dec 2012 at 20:47	576295000	8758287	30°05'N, 093°19'E	0.00	0.00	CARLYSS
HAKUSEI MARU NO.23	16 Jan 2013 at 16:29	431400208	9078660	34°01'N, 133°14'E	2.61	2.79	>JP IHA OI
HARVEY PIONEER	16 Jan 2013 at 16:29	367446970	9559949	04°04'N, 039°39'E	0.01	0.01	SECURITY





## Services: Daily Noon Report & Improved Data Grid View

Zone Entry Alerts	Port Arrival Alerts	Itinerary Change Alerts	Daily Noon Report
-------------------	---------------------	-------------------------	-------------------

Activate Noon Report

### WatchList Ships

Number of Ships: 52

NAME	RECEIVED(UTC)	MMSI	IMO	POSITION	DISTANCE ⓘ	AVGSpeed	DESTINATION	ETA	HEADING
AB LIVERPOOL	20 Jan 2013 at 11:28	304010873	9125683	51°19'N, 003°49'E	0.00	0.00	TERNEUZEN	18 Jan 2013 at 18:00	159° at 0.0 knots
ANHOLT WIND	20 Jan 2013 at 11:27	219016873	9657557	56°24'N, 010°55'E	0.00	0.00	ANHOLT WINDFARM	31 Dec 9999 at 23:59	277° at 0.0 knots
BUNGA KELANA 3	09 Jan 2013 at 09:16	533411000	9178331	14°00'N, 060°27'E	0.00	0.00	RICHARDS BAY	28 Jan 2013 at 06:00	119° at 10.6 knots
CAPT. AJ FOURNIER	21 Jan 2013 at 11:16	367091750	11	40°38'N, 074°10'E	0.00	0.00	NEWARK BAY	31 Dec 9999 at 23:59	279° at 0.0 knots
DEO GLORIA	20 Jan 2013 at 11:29	245488000	7711074	51°26'N, 003°35'E	0.00	0.00	SLIJKGAT	31 Dec 9999 at 23:59	305° at 0.0 knots
ECLIPS	20 Jan 2013 at 11:27	244710000	9126924	26°31'N, 078°45'E	0.00	0.00	FREEPORT	26 Jul 2013 at 06:00	142° at 0.0 knots
ETAGAS	15 Jan 2013 at 04:16	306131000	8712570	01°22'N, 104°25'E	0.00	0.00	JIP NIT	22 Jan 2013 at 23:00	047° at 12.3 knots
FEI XIONG 3	21 Jan 2013 at 11:13	412355140	134296704	30°52'N, 122°12'E	0.00	0.00	NANTOOHAN	22 Jan 2013 at 12:00	355° at 5.5 knots
FUGRO ADVENTURER	21 Jan 2013 at 11:27	253500000	9284153	26°26'N, 051°55'E	0.00	0.00	W. C. WHELFIELD	21 Jan 2013 at 11:20	185° at 7.8 knots

New Fields added to the Data Grid View:-

- Received(UTC)
- Position
- Distance
- AVG Speed

The new “Noon Report” email is generated daily between 12.00-13.00 UTC.

The fields of information are a subset of those displayed for the WatchList

# AISLive on your iPAD & Tablet



The new release of AISLive 7 (Full version) is now accessible on:  
iPad, Google Nexus and Samsung Tab etc

Some features in BETA



# Services: Help Centre

## Customer Help:

The new Help Centre resource is accessible via the main menu Help link



The Help Centre allows you to quickly locate and access:

- Support documents
- Training and Webinars
- Contact details
- Latest product news
- Station Hosts Monitor Area

## Maritime Community:

Join IHS Maritime on Twitter and LinkedIn

## AISLive Help Centre

### Support Documents

#### Getting Started:

- [AISLive User Guide](#)
- [AISLive Alerts User Guide](#)
- [AISLive FAQ](#)
- [AISLive Installation Kit Information](#)  
Add your port to the AISLive Network
- [Advertise](#)  
Advertise your services: Build your presence locally, regionally and internationally.

### Station Hosts

Are you a station host? Monitor your stations connectivity to the AISLive network.

- [Go to AISLive Monitor Area](#)

### Related Products and Services

- [Sea-web](#)
- [Movements Data Feeds for System Integration](#)
- [MDA Watchkeeper](#)
- [Market Intelligence Network](#)
- [Ships Expected](#)

### E-Learning

AISLive runs a customer webinar programme. Join the team as they discuss how to get the most out of your subscription.

[Next Webinar Dates and Registration](#)

#### Previous Webinars:

- [24/25 October 2012](#)  
Optimize resources by using real time positional and arrival information. Track your competition and identify new business opportunities.  
30 mins duration
- [27/29 September 2011](#)  
This webinar showcases the latest release of AISLive and covers new features and enhancements to the existing service and introduces the exciting new service AISLive PLUS.
- [16/17 February 2011](#)  
The very first webinar looks at setting up trigger zones and email alerts.

Click on the date to go to the recording information to playback or download webinar.

### Resources

#### What's New in AISLive?

Latest product news and updates.

- [AISLive 7 - Feb 2013 \(pdf\)](#)
- [AISLive 6 - Oct 2011 \(pdf\)](#)

[AISLive Mobile App](#)  
The ultimate take-anywhere live ship position resource for maritime professionals.

[AISLive LAYAR App](#)  
We have a "points of interest" (POI) layer available for the augmented reality phone browser app "LAYAR"


### Contact Us

[Customer Care Enquiries](#)  
[Sales Enquiries](#)

### Community

[Follow IHS Maritime on Twitter](#)  
[Join IHS Maritime on LinkedIn](#)





# AISLive Optimise Performance

For best performance and user experience please use:  
[Firefox 6+](#), [Chrome \(latest version\)](#), [Safari \(Latest version\)](#)

AISLive is also fully compatible with Internet Explorer 7 and above.



## AISLive: Version 7

---

We hope you have found this document useful.

If you have any questions regarding the product and recent upgrades please do not hesitate to contact us at:

**[customer.support@ihs.com](mailto:customer.support@ihs.com)**

**General Enquiries:**

**Tel: +44 (0) 1344 328300**

We welcome your feedback to help with future developments.

Thank you  
IHS Fairplay Product Management Team