

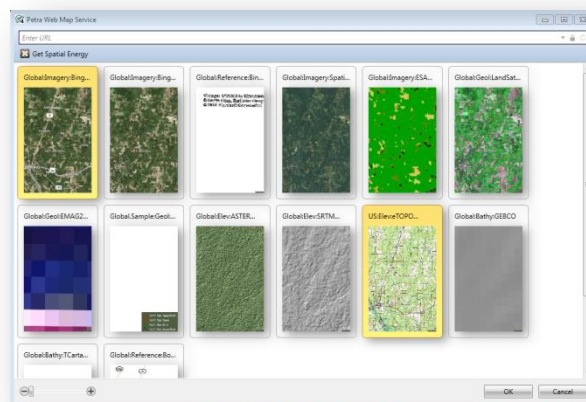
## IHS Set to Release Petra 2014

IHS is excited to announce the release of Petra 2014 coming mid-year! IHS continues to develop and introduce highly requested feature functionality to significantly improve workflow efficiencies and includes interface and usability improvements. In conjunction, we are updating the version numbering methodology across our IHS Energy software portfolio to a more consistent year-based version number.

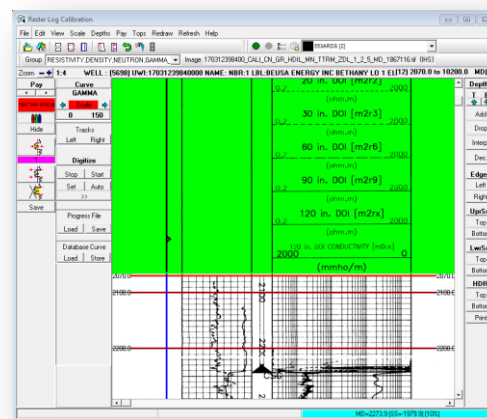
In mid-2014, Standard Edition will be updated from version 3.x and Workgroup Edition will be updated from version 4.x.

Some of the improved functionality includes:

**Multiple WMS Sources.** Users can now leverage multiple web map services (WMS) servers with transparency settings along with a new tree view of servers and layers in the imagery settings window. In addition, a new dialog box to select layers contains a thumbnail image of the layer to preview the data before adding to a map. Users can easily select which servers they would like to utilize from the imagery setting view in the Map Module.



The **Raster Calibration Module** is a non-modal function within Petra that gives users the ability to utilize the tool and functionality while editing other windows and modules. Also, users can now leverage top aliases in the module as well in order to increase the accuracy of their interpretation.



**Directional Survey Loading.** In order to increase the workflow efficiency of users who update well path information consistently, users can now copy and paste directional survey information directly into the location tab instead of only utilizing an import file.

**Data Management.** Companies now have the ability to utilize, save, and load more import templates to maintain the corporate standards they have adopted for data import. Most import operations within Petra will now maintain the selections and options for data import operations which can be used by all interpreters.

Measured Depth	True Vertical Depth	Inc	Azimuth
50.00	50.00	0.000	N8.080E
50.00	50.00	0.380	N10.570W
450.00	449.98	0.670	N13.220W
849.00	848.93	1.160	N29.510W
1299.00	1298.78	1.820	N40.570W
1749.00	1748.56	1.850	N7.840W
2199.00	2198.36	1.410	N10.910E
2649.00	2648.27	1.130	N20.200E
3099.00	3098.22	0.500	N5.360E
3549.00	3548.21	0.290	N4.400E
3999.00	3998.20	0.270	N7.080E
4449.00	4448.20	0.460	N5.680W
4899.00	4898.18	0.580	N33.740W
5349.00	5348.16	0.470	N39.320W
5799.00	5798.14	0.510	N31.400W
6249.00	6248.12	0.530	N48.580W
6699.00	6698.10	0.660	N70.080W
7149.00	7148.06	0.800	N70.760W
7599.00	7598.03	0.940	N38.820W
8049.00	8048.00	0.710	N32.760W
8499.00	8497.96	0.830	N41.110W

## Multiple Petra Platforms

IHS will continue to support, develop and maintain multiple Petra platforms - Petra Standard Edition (formerly version 3.x), resides on the DBISAM platform, and Petra Workgroup Edition (formerly version 4.x), relies on the ElevateDB engine. Our goal is to ensure that both versions are feature-equivalent, so you will continue to receive the enhancements that benefit your business.

IHS Petra 2014 Standard Edition (formerly version 3.x)	<p>Designed to support single-user or small team interpretation workflows.</p> <p>Petra Standard Edition's reliable, easy to use capabilities make it the ideal platform for customers who are looking for an all-encompassing geological solution for their exploration, development, and production analysis needs, with limited IT or administrative overhead. We anticipate that Petra Standard Edition will support geological interpretation workflows for the majority of our customers.</p>
IHS Petra 2014 Workgroup Edition (formerly version 4.x)	<p>Designed to support large teams working concurrently on shared Petra projects, including simultaneous data loading workflows.</p> <p>Petra Workgroup Edition provides scalability, database management, and user permissions management for customers who require workgroup support and performance solutions. This solution typically requires increased IT support and infrastructure. The Workgroup Edition was designed and is more suited for large companies with large multi-team environments. IHS is happy to provide contract services as an option to assist, as needed.</p>

We greatly appreciate your feedback, which has guided our overall product strategy and look forward to our continued partnership of building software that addresses your workflow needs. We especially appreciate your intense loyalty for Petra, and we will strive to improve Petra's power, flexibility and ease of use, both now and in the future.