



# IHS Maritime: AISLive Premium v1 Release Notes





## AISLive: AISLive Premium v1 - New Release, April 2013

---

We are very excited to announce a brand new service to our extensive suite of movement products. AISLive Premium is a new service that combines all the great features of *Standard & Plus* but with an added dimension - *the inclusion of satellite data for mid ocean coverage*.

AISLive Premium enables you to save time and money by optimising your resources and gain an edge on your competition as well as helping you identify and develop new business opportunities.

We trust you will find the new AISLive Premium service will help you meet your fleet tracking and port management needs.

IHS Maritime Product Management Team



# AISLive Premium v1: Summary of Service

Benefits and Value	Page No.
How can AISLive Premium help your business?	4
Data	
Satellite & Terrestrial Movements Coverage	5-7
Verified IHS Ship Data	8
Comprehensive IHS Port Information	9
Additional Information	10
Services	
Multiple Layered Maps	11
Ship Track History	12-13
Distance Tables	14
Ship Watch Service (WatchList & Alerts)	15
Ship Watch Service (Port Movements & Alerts)	16
Optimise Performance	17



## Benefits: How can AISLive Premium help your business?





## Data: Satellite & Terrestrial Movements Coverage

AISLive Premium enables you to track live ship positions with unrivalled AIS coverage, analyse the risk profiles of ships entering your waters and watch the global flow of commodities across the waves.

IHS Maritime is currently the leading provider of combined satellite and terrestrial AIS ship position, movement and port calling information.

Users will enjoy live coverage of ship positions and movements along the world's critical maritime trade routes, including deep ocean, for asset tracking or risk assessment.



### Confidence

Have absolute **confidence** and **trust** in the data sources allowing you to make your smart business critical decisions and planning with ease.



# AISLive Premium

## Don't lose sight of your ship

AISLive Coverage: *Terrestrial Network*



AISLive Premium Coverage: *Satellite & Terrestrial Network*



AISLive Premium: Includes combined satellite and terrestrial coverage of ship movements  
Greater visibility for your fleets' deep sea and offshore movements

# Data: Satellite & Terrestrial Movements

AISLive Premium enables you to track all the ships including deep sea movements



## Operational Efficiency

Follow your fleets global movements including deep sea coverage to keep track of their routes, speeds and arrival times.



## Domain Awareness

Using AISLive Premium gives you a clear picture of all the ship movements in your domain, providing a clear picture of ships sailing in all your waters




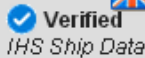

## Identifying Movement Trends

Using the deep sea movements get a clear picture of global movements to identify movement trends and competitor movements






## Data: Verified IHS Ship Data



MMSI	<b>235050393</b>	Latitude	<b>N 50°37.263'</b>	Last seen at	<b>17 Jan 2013 11:45:44 UTC</b>
Name	<b>CSAV Rio Grande</b>	Longitude	<b>W 001°02.683'</b>	Destination	<b>For Orders</b>
Callsign	<b>MIEL</b>	Heading	<b>233°</b>	ETA	<b>12 Jan 2013 19:00:00 UTC</b>
IMO number	<b>9308807</b>	Status	<b>Anchored</b>	Arrival in	<b>N/A</b>
Length	<b>182.80 m</b>	Speed	<b>0.1 knots (service 20.0 knots)</b>	Itinerary Change Alert	<input type="checkbox"/>
Breadth	<b>31.50 m</b>	Ship Type	<b>Vehicles Carrier</b>	Track on Map	<input type="checkbox"/>
Draught	<b>7.9 m (max 9.0m)</b>	Extra Info	<b>N/A</b>	My Watchlist	<input type="checkbox"/>

[AIS Extras](#)  
[Sea-web](#)  
[Distance](#)  
**Last Seen**  
 **Live**

### Enjoy verified data.

Using our ships and ports databases we have enhanced the data displayed with IHS ship/port data to supply more accurate and complete information.

The verified data is shown in **blue** in the AIS message as shown above.

#### This includes:-

LR/IMO Number

Ship name

Length

Draught

Ship Type

MMSI

Callsign

Breadth

Speed



### Confidence

Have absolute **confidence** and **trust** in the data sources allowing you to make your smart business critical decisions and planning with ease.



## Data: Comprehensive IHS Port Information

AISLive Premium provides comprehensive details of over 11,000 ports & terminals including a complete description of the port and all of the relevant facilities, pre-arrival and navigation details, berths and cargo, tanker berths, plans and mooring diagrams, contact details of port service providers and agents, port photographs, and AIS movements in the port in the last 24 hours with an alert service.



### Operational Efficiency

- Use the quality data to comply with ISPS code regulations.
- Obtain the most recent information, 24 hours a day, on port news and developments for planning a port call.
- Find specific services at worldwide ports



### Competitor Analysis

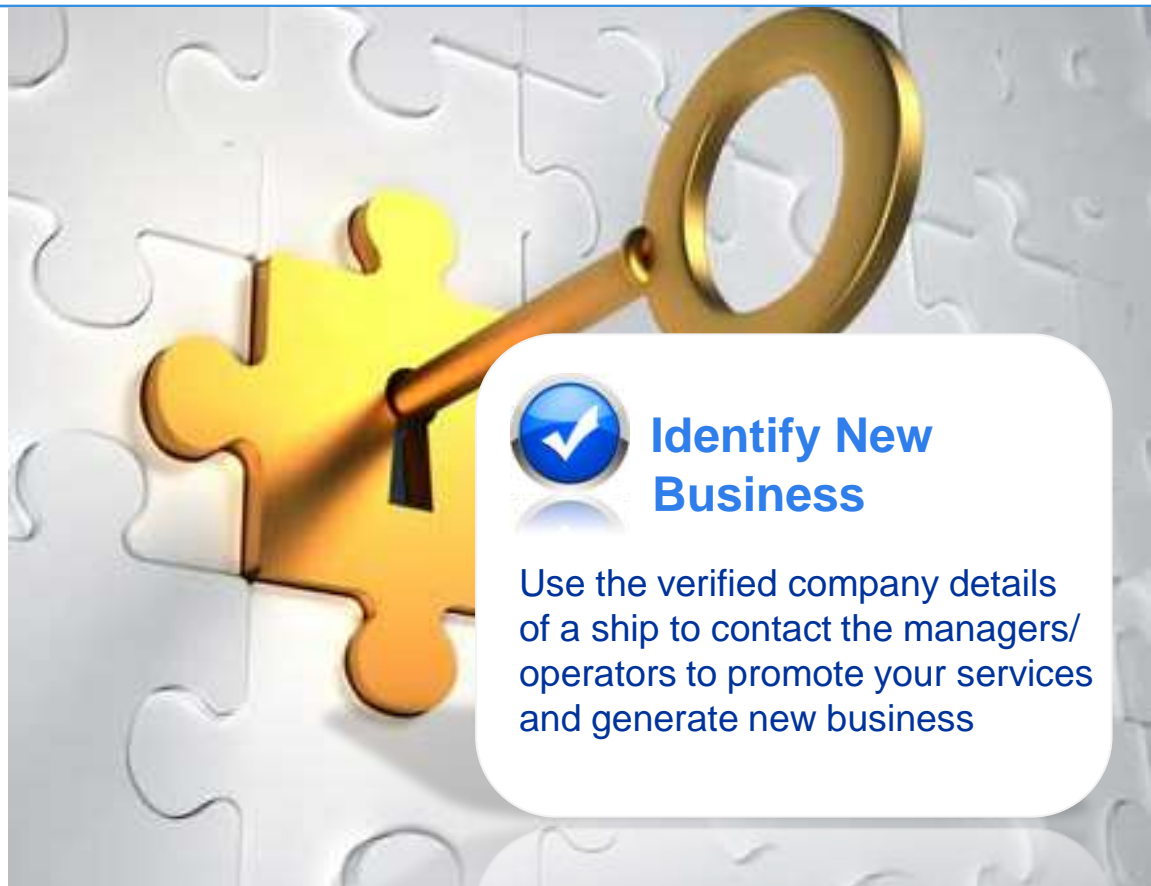
- Gain a competitive advantage by using the most accurate, current, and comprehensive data available
- Use the invaluable data to conduct market and competitor research



## Data: Additional Information

AISLive Premium also provides:-

- Ownership information of the ship and valuable contact information
- The last 50 port callings of the ship
- Over 170,000 images of vessels
- Ship tracks for the last 7 days
- Events Timeline
- Weather information



# Services: Multiple Layered Maps

AISLive Premium uses dynamic interactive chart technology.

With 5 different map views, AISLive users can select the mapping charts of choice.

AISLive Premium uses 16 levels of zoom with interactive charts that are simple to use and easy to navigate.

## AISLive: State of the Art Mapping Tool

Multiple layered maps with greater visibility and navigation



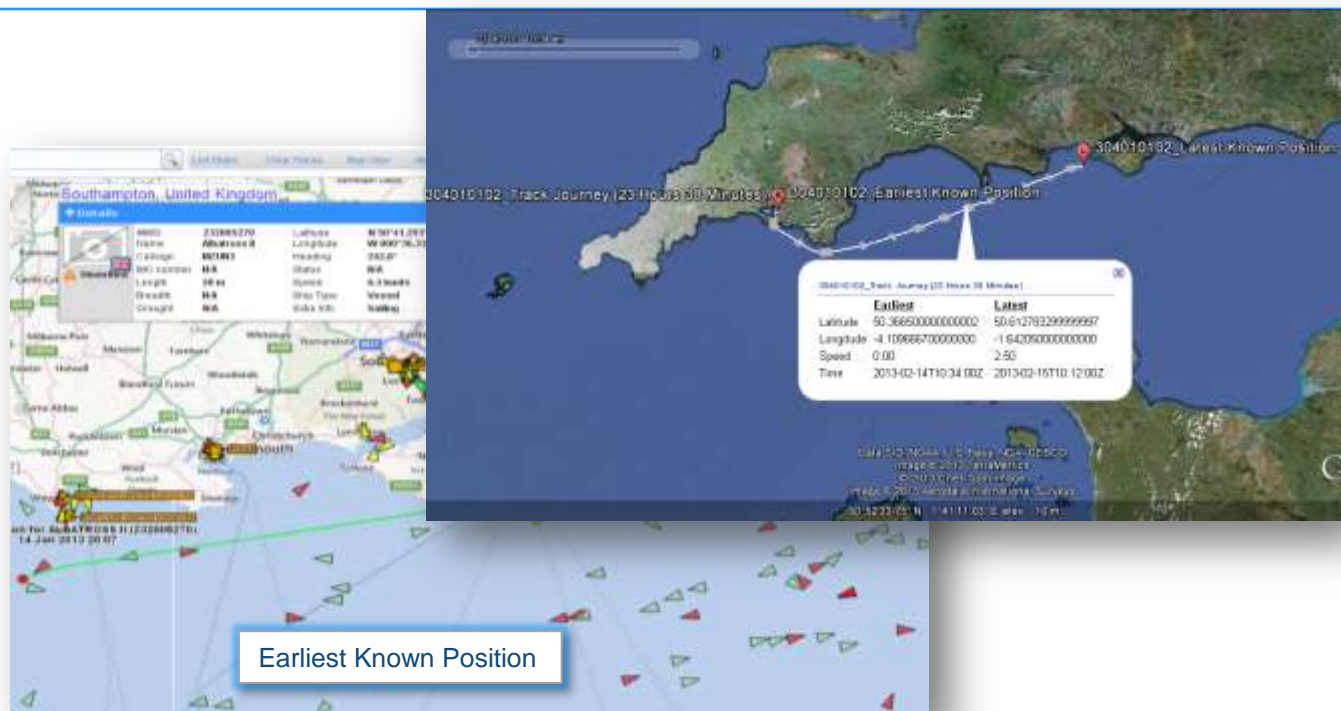


## Services: Ship Track History

Use the simple Ship Track History to follow a ship's trading patterns/ global movements taken from our satellite and terrestrial network.

AISLive Premium users can view ship tracks on the map for the last 7 days.

Enjoy the advance track service to see vessel speed and position up to 7 days.



### Operational Efficiency

The user friendly tools keep track of your fleets movements and speed over the last 7 days to follow routes and ship speed efficiency.



### Competitor Analysis

Use this simple function to analyse competitor trading routes using live, accurate, reliable data.





## Services: Distance Tables

The Distance Table tool provides online distance tables supplied by Veson Nautical, and offer a convenient tool to access millions of routes for voyage estimation and comparison.

**Details**

MMSI	367168640	Latitude	N 49°32.311'	Last seen at	17 Jan 2013 12:47:31 UTC
Name	Charleston Express	Longitude	W 003°44.210'	Destination	Antwerp Wandelaar
Callsign	WDD6126	Heading	68°	ETA	18 Jan 2013 6:00:00 UTC
IMO number	9243162	Status	Under way using engine	Arrival in	17 Hours 12 Minutes
Length	243.35 m	Speed	18.7 knots (service 20.4 knots)	Itinerary Change Alert	<input type="checkbox"/>
Breadth	32.20 m	Ship Type	Container Ship (Fully cellular)	Track on Map	<input type="checkbox"/>
Draught	9.1 m (max 11.0m)	Extra Info	N/A	My Watchlist	<input type="checkbox"/>

**Distance**

**Nautical Distances**

Start Position: N 49°32.311' W 003°44.210'

Speed: 18.7

Destination: Antwerp

Uses Current data

Links to Veson Distance Tables

Distance

Back to Ship

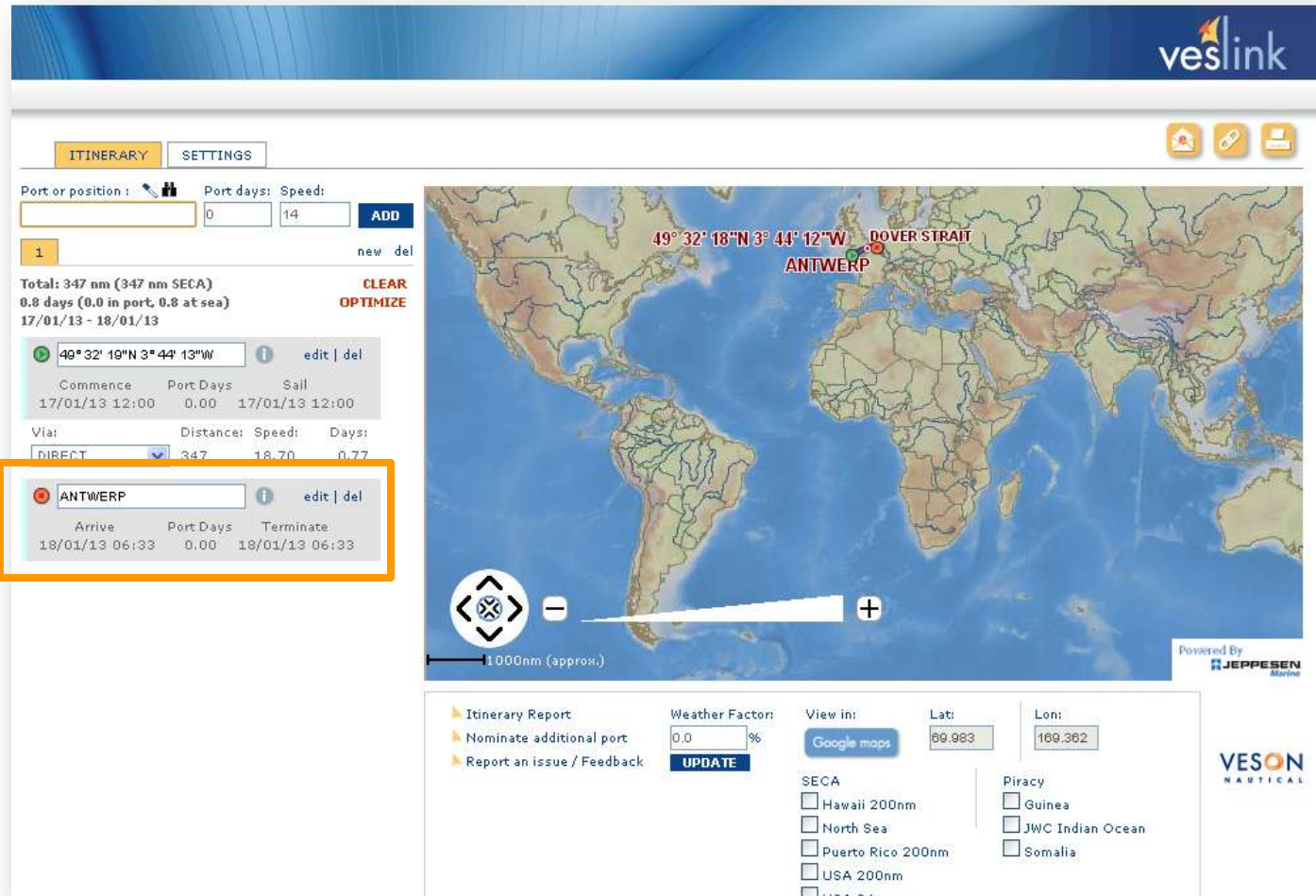


## Operational Efficiency

Use this service to get more accurate times of arrival of ships arrival in port to help with time management of service staff waiting to service the ship.

# Services: Distance Table

- Routing can be edited to reflect seasonal constraints and user specific requirements. Optional functionality includes point to port and point to point distance and route retrieval.
- The system will work out the estimated time of arrival using the ships reported destination, current position and speed.



The screenshot displays the 'veslink' web application interface. On the left, the 'ITINERARY' tab is active, showing a route from a starting point (49° 32' 18" N 3° 44' 12" W) to 'ANTWERP'. The route details include a total distance of 347 nm (347 nm SECA), 0.8 days (0.0 in port, 0.8 at sea), and a date range of 17/01/13 to 18/01/13. A table shows the arrival at Antwerp on 18/01/13 at 06:33. The 'ANTWERP' entry is highlighted with an orange box. On the right, a map shows the route from the starting point to Antwerp. The bottom section includes options for 'Itinerary Report', 'Weather Factor' (0.0%), and 'View in: Google maps'. There are also checkboxes for 'SECA' (Hawaii 200nm, North Sea, Puerto Rico 200nm, USA 200nm, USA 24nm) and 'Piracy' (Guinea, JWC Indian Ocean, Somalia).



## Services: Ship Watch (Alerts and WatchList)

### The Ship Watch service includes:-

#### WatchList

Premium users can add up to 250 ships to the WatchList.

#### Daily Noon Reports

Daily emails of current position of all ships in the WatchList.

#### Itinerary Change Alert

If the ship changes destination or estimated time of arrival an email is sent automatically.

#### Bespoke Zones and Alerts

Premium users can set up to **50** bespoke alert zones anywhere in the world. Each vessel in the WatchList can be added to the bespoke zones. You will then be automatically emailed when a vessel passed through the zone.



### Manage Staff Resources & Operational Efficiency

- Use the Ship Watch innovative tools to help manage service staff time effectively to save invaluable waiting time and costs.



### Risk Analysis

- Use the bespoke zones, and alerts around targeted areas to ensure that a ship does not contravene its agreed trading zone.
- Identify and watch vessels that could be a security risk in your waters



## Services: Ship Watch (Port Movements & Alert )

### The Ship Watch service includes:

#### Port Callings

Use the port movement data to see:


- All ships due in the port in the next 24 hours with an alert service to notify users when the vessel has entered the port.
- Vessels currently in port
- All ships departed the port in the last 24 hours



### Generate New Business

Identify ships due into your port in the next 24 hours and use the verified company information to contact owners and offer your services.





# AISLive Premium Optimise Performance

For best performance and user experience please use:  
[Firefox 6+](#), [Chrome \(latest version\)](#), [Safari \(Latest version\)](#)

AISLive is also fully compatible with Internet Explorer 7 and above.

# AISLive Premium on your iPAD & Tablet



AISLive Premium (Full version) is accessible on:  
[iPad](#), [Google Nexus](#) and [Samsung Tab](#) etc

Some features in BETA



# AISLive Premium

---

We hope you have found this document useful.

If you have any questions regarding the product and recent upgrades please do not hesitate to contact us at:

**[customer.support@ihs.com](mailto:customer.support@ihs.com)**

**General Enquiries:**

**Tel: +44 (0) 1344 328300**

We welcome your feedback to help with future developments.

Thank you

IHS Maritime Product Management Team