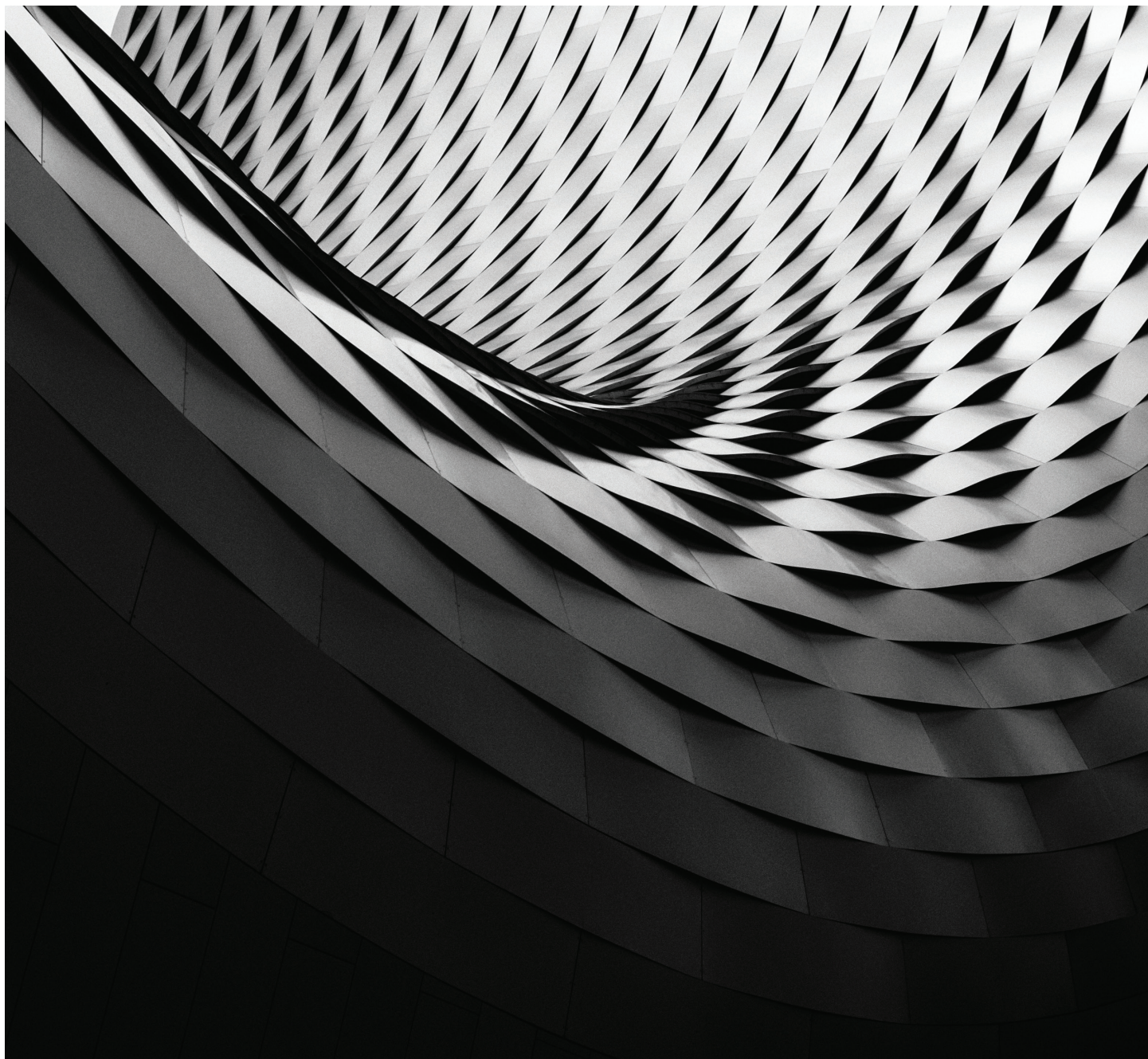


Portfolio Analytics

Essential Portfolio Intelligence

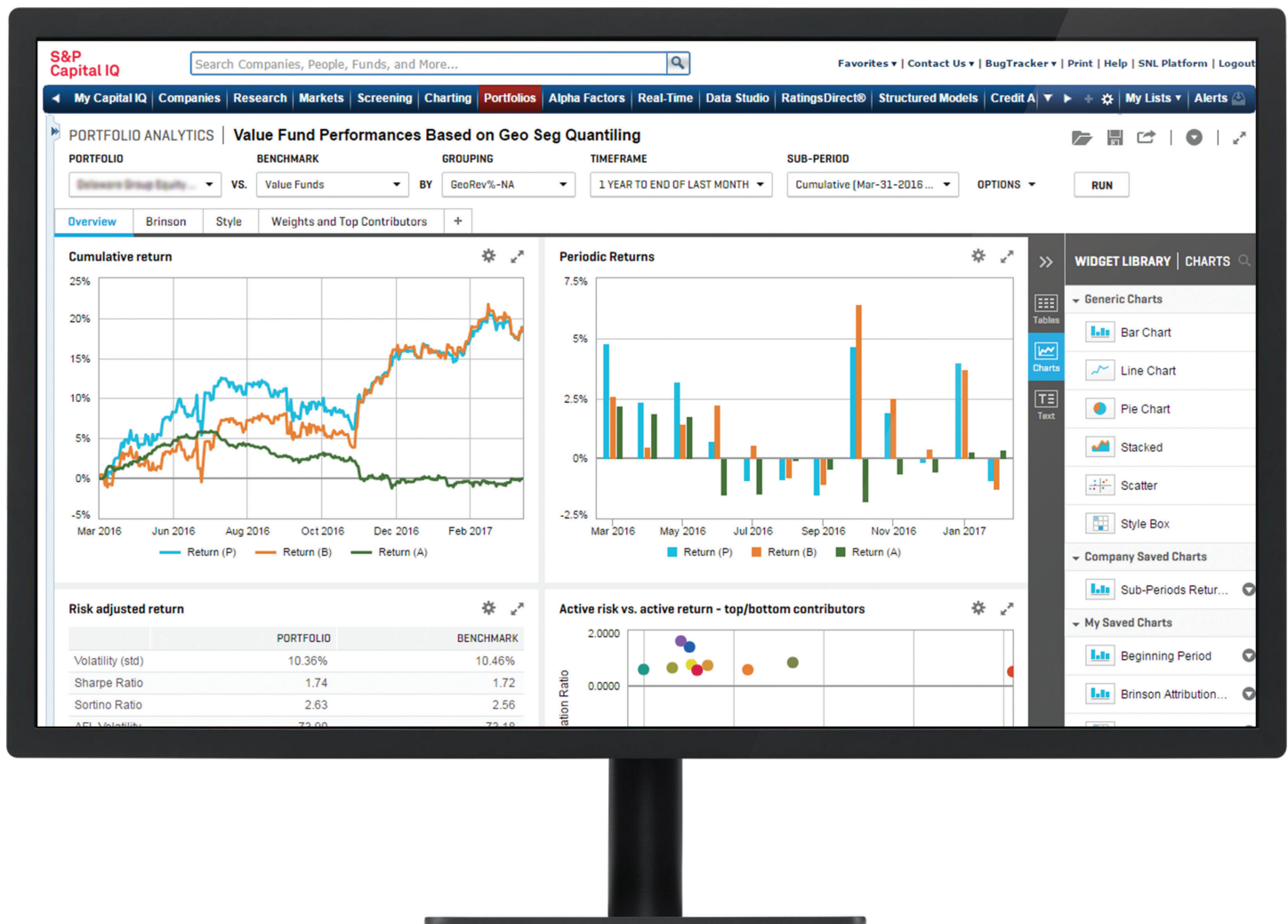


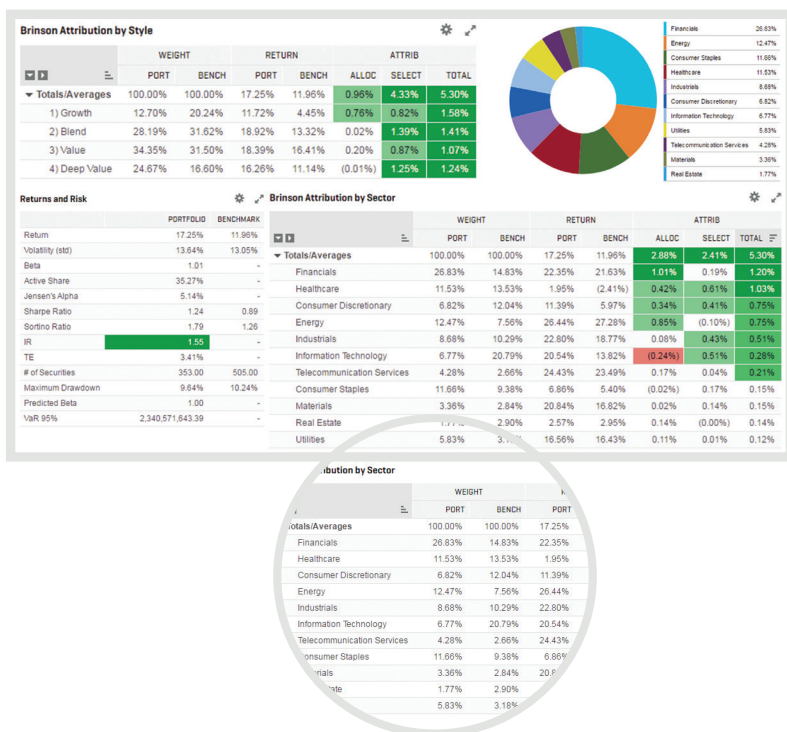
S&P Global

Market Intelligence

Your investment process is what sets you apart. Gain a competitive advantage with streamlined portfolio analysis, differentiated data and flexible reporting.

Portfolio Analytics provides greater insight into your investment process by transforming comprehensive fundamental and industry leading data into powerful portfolio intelligence. Communicate the strengths behind your strategy and expand your understanding of market factors that impact your investments—from financial to environmental. Promote your investment process with flexible client-ready reports that highlight your unique strategy.





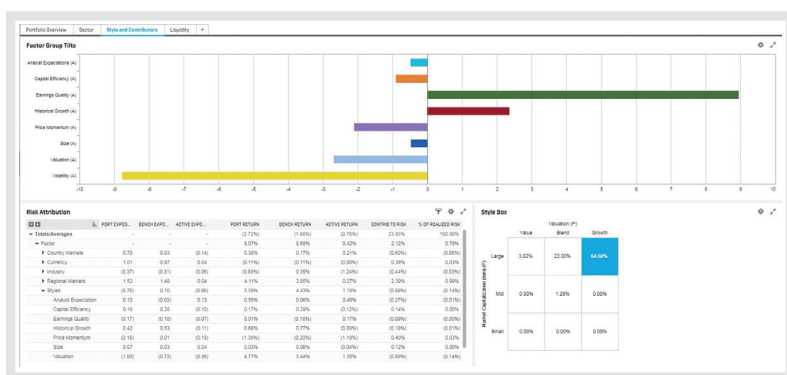
Streamline Portfolio Reporting and Monitoring

- Design custom reports that better showcase absolute and benchmark-relative performance.
- Improve client conversations with deep insights into investment style exposures and sources of risk diversification.
- Run reports on-the-fly or schedule recurring daily, monthly, and quarterly Excel and PDF reports to be delivered via email or ftp with your corporate branding.
- Monitor intra-day portfolio performance and attribution.

	CIQ GLOBAL FUND	INTERNATIONAL GROWTH PORTFOLIO	SMALL CAP GLOBAL
1 Month Return	3.92%	4.13%	2.62%
3 Month Return	9.61%	9.30%	9.27%
1 Yr Return	12.98%	14.60%	12.87%
1 Yr Std. Dev	13.77%	14.50%	14.10%
1 Yr Sharpe Ratio	0.91	0.98	0.88
Market Value (P)	4,096,520,148.39	28,755,976,081.98	58,125,512.85
Total Predicted Risk (P)	11.88%	12.88%	14.42%
VaR 95% (P)	768,120,967.34	5,856,135,977.93	13,267,370.80
Market Capitalization (P) (mm)	57,045.32	63,981.38	7,927.44
P/E	21.56	19.56	21.88
Forward P/E (P)	20.23	18.63	25.23
Dividend Yield (P)	2.15	2.43	0.98
EPS 1 Yr Growth	9.09%	56.02%	67.41%

Customize Dashboards for a Quick Snapshot of Your Portfolios

- Quickly assess and compare your performance relative to peer funds, exchange traded funds, and indices.
- Leverage an extensive library of client-ready layouts or configure custom dashboards by dragging and dropping tables, charts, graphics, and text.



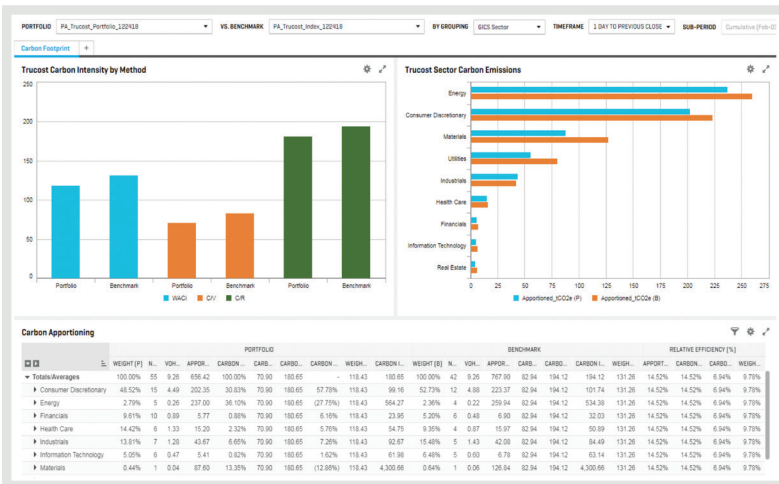
Incorporate Your Competitive Advantage into Analytics

- Integrate proprietary classifications, rankings and metrics that highlight your investment strategy and performance.
- Study and uncover investing signals with Alpha Factor Library, totaling over 550 valuation, sentiment, earnings quality and capital efficiency factors.
- Leverage Alpha Factor Library's extensive catalogue to view any style tilts in your portfolio and to create custom Style Boxes.
- Identify hidden risk exposures to currencies, regions, industries and styles, using S&P Market Intelligence's proprietary risk models.

Integrate Trucost environmental impact data into your portfolio analysis workflow

With Trucost's robust, quality-checked, and standardized environmental performance data on 15,000 companies, representing 98% of global market capitalization, you can:

- Evaluate your portfolio carbon footprint against benchmarks and peers
- Understand the contribution of low- and high-carbon companies and sectors to your portfolio risk/return profile
- Assess performance trends with robust time-series data and the platform's seamless portfolio integration capabilities
- Combine a range of environmental considerations with traditional equity factors for an enhanced view on portfolio performance
- Provide transparency to stakeholders on your integration of environmental risks and opportunities in portfolio construction



About S&P Global Market Intelligence

S&P Global Market Intelligence integrates financial and industry data, research, and news into tools that help track performance, generate alpha, identify investment ideas, understand competitive and industry dynamics, perform valuation, and assess risk.

About Trucost

Trucost is part of S&P Global. A leader in carbon and environmental data and risk analysis, Trucost assesses risks relating to climate change, natural resource constraints, and broader environmental, social, and governance factors. Companies and financial institutions use Trucost intelligence to understand their ESG exposure to these factors, inform resilience and identify transformative solutions for a more sustainable global economy. S&P Global's commitment to environmental analysis and product innovation allows us to deliver essential ESG investment-related information to the global marketplace. For more information, visit www.trucost.com.

CONTACT US

The Americas

+1-877-863-1306

Europe, Middle East & Africa

+44-20-7176-1234

Asia-Pacific

+852-2533-3565