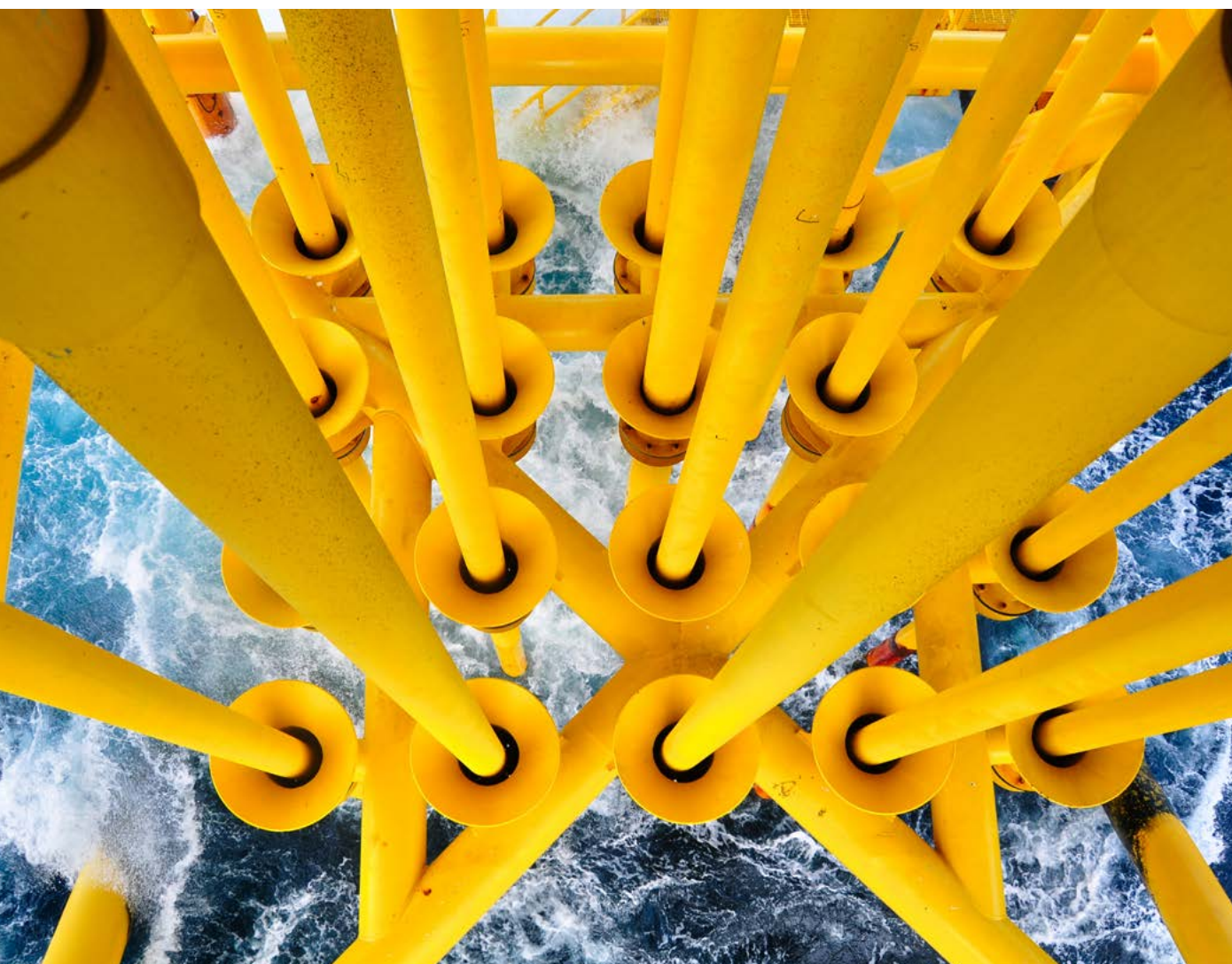


# Kingdom™ Gateway

Streamline your interpretation to geomodeling workflow with ease and efficiency



---

**S&P Global**

Commodity Insights

## Kingdom Gateway Plug-in for the Petrel\* Platform

The oil and gas industry continues to invest in E&P software from multiple vendors to support their organizations. As such, they require innovative tools to help reduce their geoscientist's time spent on data transfers, so they focus more on analyzing the data. Kingdom Gateway by S&P Global Commodity Insights is a plug-in that connects Kingdom Geoscience Software with the Petrel\* platform to easily share interpretation and modeling data efficiently.

Developed for users of both Kingdom and Petrel, Kingdom Gateway enables them to streamline their interpretation to geomodeling workflow. By simultaneously working on both platforms, users can transfer their subsurface data from Kingdom to Petrel to create the geomodel, then push the interpreted grids back to Kingdom.

Using the Schlumberger Ocean\* software development framework, we built a direct bridge between Kingdom and the Petrel platform. Data can be shared between Kingdom and Petrel in the time it takes to drag and drop between projects, removing any intermediate file-loading steps.

### Version Requirements

Kingdom	Petrel
Kingdom 2023	Petrel 2023.x, 2022.x, 2021.x, Petrel 2020.x
Kingdom 2022	Petrel 2022.x, 2021.x, Petrel 2020.x
Kingdom 2021	Petrel 2021.x, Petrel 2020.x, Petrel 2019.x
Kingdom 2020	Petrel 2019.x, Petrel 2018.x

The following table defines the data types that Kingdom Gateway supports for transfer between Kingdom and Petrel, ensure your asset team is using the same information.

Data Type	Petrel to Kingdom	Kingdom to Petrel
Wells	✓	✓
Deviation Surveys	✓	✓
Time-Depth Tables	✓	✓
Digital Log Curves	✓	✓
Formation Tops	✓	✓
Interpreted Grids	✓	✓
Faults	✓	✓
Fault Cuts	✓	✓
Fault Polygons	✓	✓
Horizons	✓	✓
2D Seismic	✓	✓
3D Seismic	✓	✓
Rotated Grids	✓	

Source: S&P Global Commodity Insights

## Notable Developments

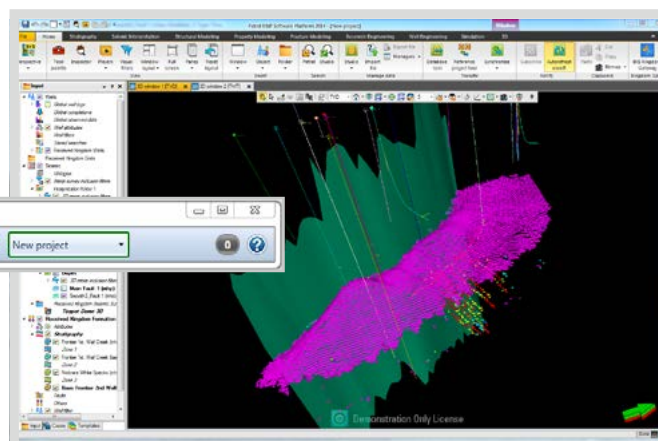
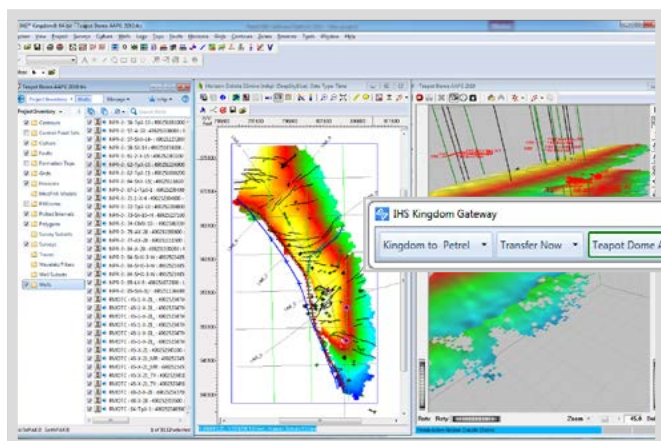
- The installer will automatically install Petrel plug-ins for supported versions. When running Kingdom Gateway, it will now recognize which version of Petrel\* is running for the selected Petrel\* project.
- 2D and 3D seismic transferred from Kingdom to Petrel^ now defaults the vintage in Petrel\* to the data type from Kingdom instead of letting Petrel\* default the vintage.
- Transferring well data is 3 times faster.
- Large grids (more than 1 million cells) is supported.
- Grid transfer is 2 times faster.
- Horizons transfer now even if one seismic line is corrupt or has null values. The anomaly is written in transfer report.
- Subsea values from Kingdom and Petrel are properly translated.

## Interpreters can use Kingdom Gateway to:

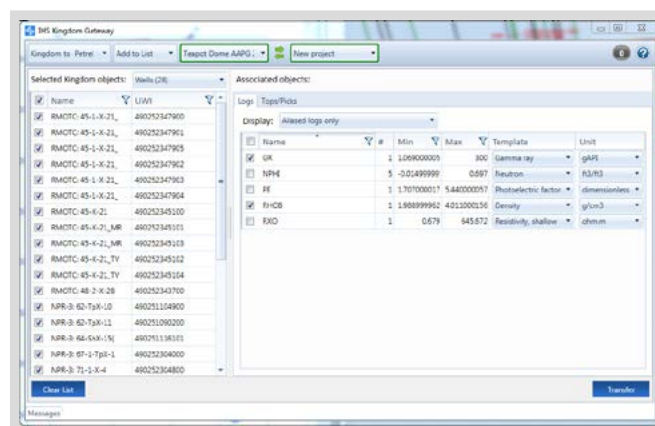
- Transfer Now method for immediate transfer to Petrel.
- Simply drag and drop data selection from Kingdom to Petrel.
- Interpretations generated or modified in Petrel can be synchronized back to Kingdom.

## Data Managers can use Kingdom Gateway to:

- Build a complete dataset in Kingdom prior to sharing it with Petrel.
- Select log curve suites based on simple names or Log Alias groups and assign Petrel software templates for proper loading.
- Control data duplication with conflict resolution options.



With the Kingdom Gateway plug-in, interpreters working in Kingdom will no longer have to break their interpretive train of thought to move critical information between Kingdom and Petrel. Just another example of how Commodity Insights continues to innovate and build connections that enable interpreters to stop worrying about moving and handling data so they can focus on what's important—finding and developing oil and gas.



## About S&P Global Commodity Insights

At S&P Global Commodity Insights, our complete view of global energy and commodity markets enables our customers to make decisions with conviction and create long-term, sustainable value.

We're a trusted connector that brings together thought leaders, market participants, governments and regulators, and we create solutions that lead to progress.

Vital to navigating commodity markets, our coverage includes oil and gas, power, chemicals, metals, agriculture, shipping and energy transition. Platts® products and services, including the most significant benchmark price assessments in the physical commodity markets, are offered through S&P Global Commodity Insights.

S&P Global Commodity Insights is a division of S&P Global (NYSE: SPGI).

S&P Global is the world's foremost provider of credit ratings, benchmarks, analytics and workflow solutions in the global capital, commodity and automotive markets. With every one of our offerings, we help many of the world's leading organizations navigate the economic landscape so they can plan for tomorrow, today. For more information visit <https://www.spglobal.com/commodityinsights>.

Learn more at [spglobal.com/kingdom](https://www.spglobal.com/kingdom)

### OFFICE LOCATIONS

[spglobal.com/offices](https://www.spglobal.com/offices)

### CONTACT US

#### Asia-Pacific

+65-6530-6430

#### EMEA

+44(0)20-7176-6111

#### North America

+1-800-752-8878

For more information, please email us at [ci.support@spglobal.com](mailto:ci.support@spglobal.com)

Copyright © 2023 by S&P Global Inc. All rights reserved.

[spglobal.com/commodityinsights](https://www.spglobal.com/commodityinsights)