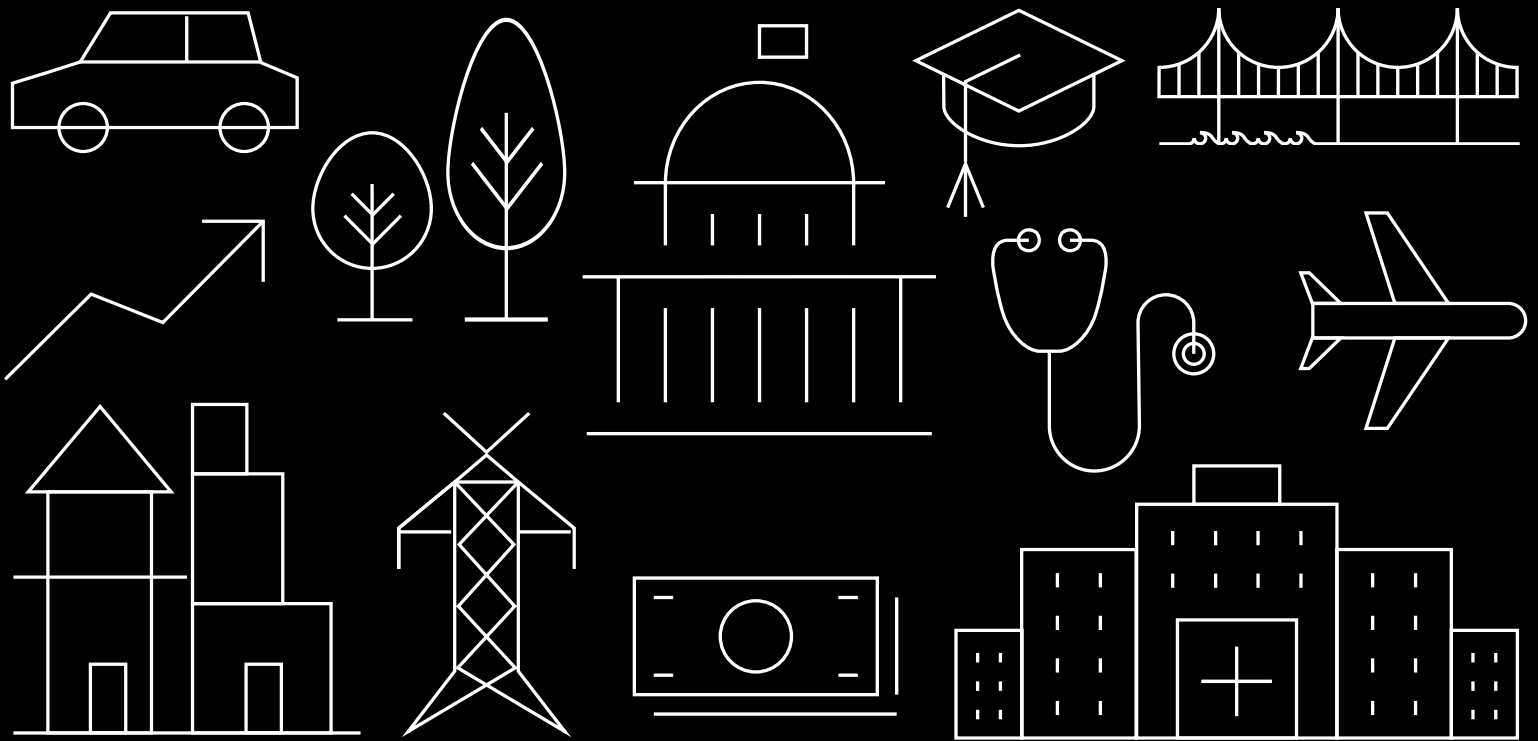

S&P Global Ratings



Americas Public Finance | Directory

Insight Driven by Experience

Navigate Complexity with Confidence

Today's municipal market is increasingly complex and challenging. We understand that to make decisions with confidence, you want new insights about credit risk. Whether you are an issuer, intermediary or investor, you need information about this risk that's based on in-depth market knowledge, forward-looking analyses and transparent criteria. And that's where our insight is essential.

For more than 60 years, our public finance team has provided credit ratings, analyses and market insights for a diverse range of public sector and not-for-profit entities. Our analysts have extensive industry experience, and our ratings reflect our deep understanding of the sector and regional nuances that drive short- and long-term credit trends. We also recognize that each bond issue is unique, and listen closely to you and your credit story.

Our public finance team is based in 10 regional offices, allowing us to strengthen connections with you and other market participants. We constantly strive to enhance our analytics to

meet the demands of a dynamic market. To gain deeper insights about the market, we actively participate in industry conferences and programs, and host our own roundtables and other events. We're focused on emerging risks and market trends, and keep you up-to-date via our research and event-driven updates.

Our coverage, relationships and breadth of experience mean that our teams are uniquely positioned to provide you with the analyses and insights you need to make informed financing decisions.

Our Coverage



Charter Schools

Charter schools, private independent schools, community colleges



State Governments

Pension funds, state governmental authorities, states



Health Care

Human service providers, long-term care providers, not-for-profit hospitals and health systems



Transportation

Airports, bridges, ports, toll road operators, transit systems



Higher Education

501(c)(3) and cultural institutions, privatized student housing, public and private higher educational institutions



Utility Revenue

Water, wastewater, solid waste



Housing

Community development financial institutions (CDFIs), housing finance agencies (HFAs), public housing authorities (PHAs), public or military housing providers



Cross Analytical Practice Expertise

Municipal pools, ratings across different issuer and security types



Municipal & Cooperative Power

Electric cooperatives, public power providers



Sovereign and International Public Finance

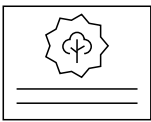
Sovereigns, Multilateral Lending Institutions, Local and Regional Governments outside of the U.S., Non-For-Profit Enterprises, Pensions, Public Sector Funding Agencies, and other Government Related Entities



Local Governments

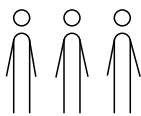
Boroughs, cities, counties, local and regional governmental authorities, school districts, special districts, towns, townships, villages

Our Footprint



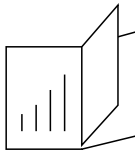
20,000+

ratings outstanding
on public finance entities



240+

rating analysts dedicated to
public finance



175+

articles delivered
annually on topical credit
issues

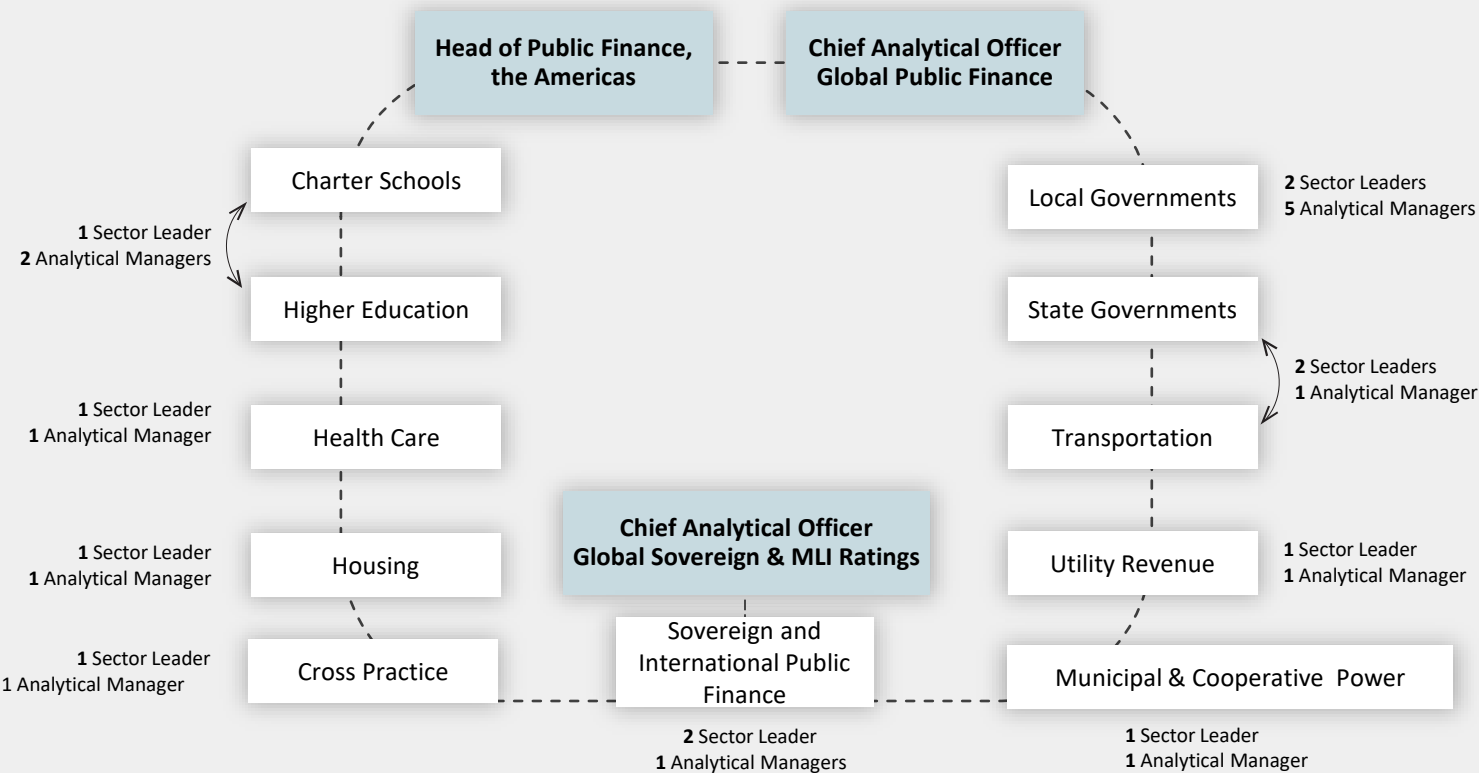


10 Regional Offices

Boston, MA
Englewood, CO
Chicago, IL
Dallas, TX
New York, NY
San Francisco, CA
Toronto, Canada
Mexico City, Mexico
São Paulo, Brazil
Buenos Aires, Argentina

Interconnectivity of Our Teams

Our public finance leadership team, as outlined below, works collaboratively to provide the highest quality analytics, talent and customer focus. The analytical experience of the team is underscored by its collective 200+ years of credit experience.



Analytical Leadership



Head of Public Finance, the Americas

Matthew Reining

Managing Director

New York, NY

+1-212-438-3610

matthew.reining@spglobal.com

Analytical Managers



Charter Schools

Luke Gildner

Managing Director

Charlotte, NC

+1-303-721-4124

luke.gildner@spglobal.com



Healthcare

Stephen Infranco

Managing Director

New York, NY

+1-212-438-2025

stephen.infranco@spglobal.com



Higher Education

Laura Kuffler-Macdonald

Managing Director

New York, NY

+1-212-438-2519

laura.kuffler.macdonald@spglobal.com



Housing

Caroline West

Managing Director

Chicago

+1-312-233-7047

caroline.west@spglobal.com



Local Government - East

Charlene Butterfield

Managing Director

New York, NY

+1-212-438-2741

charlene.butterfield@spglobal.com



Local Government - Midwest

Blake Yocom

Managing Director

Chicago, IL

+1-312-233-7056

blake.yocom@spglobal.com



Local Government - South

Joshua Travis

Managing Director

Dallas, TX

+1-972-367-3340

joshua.travis@spglobal.com



Local Government – Central

Andrew Bredeson

Managing Director

Englewood, CO

+1-303-721-4825

andrew.bredeson@spglobal.com



Local Government – West

Avani Parikh

Managing Director

Phoenix, AZ

+1-212-438-1133

avani.parikh@spglobal.com



States and Transportation

Sussan Corson

Managing Director

New York, NY

+1-212-438-2014

sussan.corson@spglobal.com



Municipal & Cooperative Power

Tiffany Tribbitt

Managing Director

New York, NY

+1-212-438-8218

tiffany.tribbitt@spglobal.com



Utilities

Jennifer Boyd

Managing Director

Chicago, IL

+1-312-233-7040

jennifer.boyd@spglobal.com



Cross Analytical Practice Expertise

Felix Winnekens

Managing Director

New York, NY

+1-212-438-0313

felix.winnekens@spglobal.com



Sovereign and International Public Finance

Daniela Brandazza

Managing Director

Toronto, ON

+1-437-833-0581

daniela.brandazza@spglobal.com

Analytical Leadership



Chief Analytical Officer

Nora Wittstruck

Managing Director

New York, NY

+1-212-438-8589

nora.wittstruck@spglobal.com

Sector Leaders



Charter Schools and Higher Education

Jessica Wood

Managing Director

Chicago, IL

+1-312-233-7004

jessica.wood@spglobal.com



Health Care

Suzie Desai

Managing Director

Chicago, IL

+1-312-233-7046

suzie.desai@spglobal.com



Housing

Hannah Blitzer

Managing Director

New York, NY

+1-212-438-0311

hannah.blitzer@spglobal.com



Municipal & Cooperative Power

David Bodek

Managing Director

New York, NY

+1-212-438-7969

david.bodek@spglobal.com



Water, Utilities, and Transportation

Kurt Forsgren

Managing Director

Boston, MA

+1-617-530-8308

kurt.forsgren@spglobal.com



Government

Geoff Buswick

Managing Director

Boston, MA

+1-617-530-8311

geoffrey.buswick@spglobal.com



Government

Jane Ridley

Managing Director

Chicago, IL

+1-312-233-7192

jane.ridley@spglobal.com



Government & Cross Practice

Sarah Sullivan

Managing Director

Austin, TX

+1-415-371-5051

sarah.sullivan@spglobal.com



Sovereign, International Public Finance, & Multilateral Lending Institutions

Lisa Schineller

Managing Director

New York, NY

+1-917-859-0162

lisa.schineller@spglobal.com

Sovereign Analytical Leadership



Chief Analytical Officer Global Sovereign & MLI Ratings

Roberto H. Sifon Arevalo

Managing Director

New York, NY

+1-646-467-4578

roberto.sifon-arevalo@spglobal.com

Sector Leaders



Sovereign in the Americas

Joydeep Mukerji

Managing Director

New York, NY

+1-212-438-7351

joydeep.mukerji@spglobal.com

Commercial Team

Interim Team Leader



Anthony Ivancich
Director
New York, NY
+1-212-438-5060 (office)
+1-646-656-7910 (mobile)
anthony.ivancich@spglobal.com

Relationship Managers



Northeast/Canada
Anthony Ivancich
Director
New York, NY
+1-212-438-5060 (office)
+1-646-656-7910 (mobile)
anthony.ivancich@spglobal.com

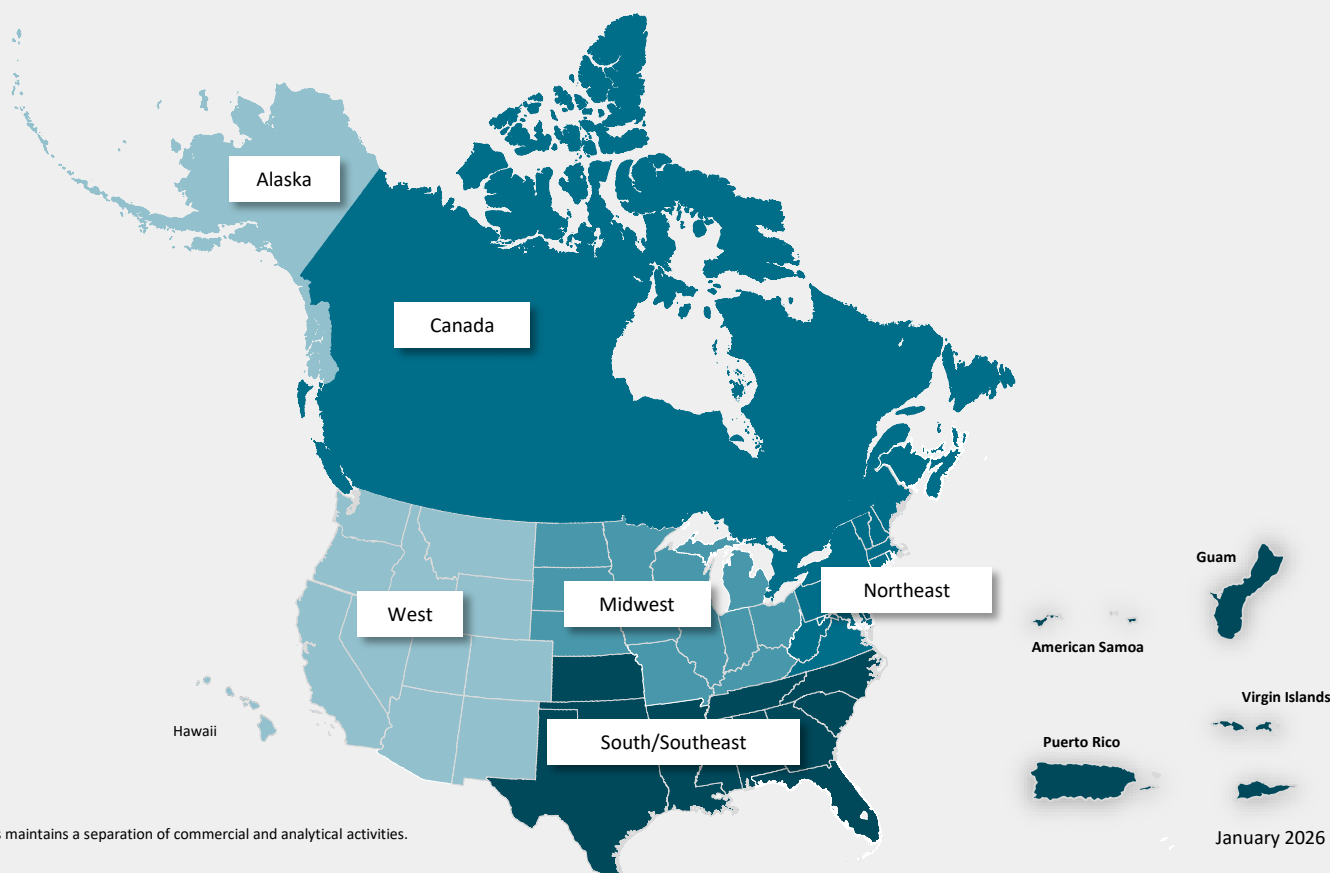


West/Southwest
Marc Hughes
Director
San Francisco, CA
+1-415-371-5012 (office)
+1-415-806-6001 (mobile)
marc.hughes@spglobal.com



South/Southeast/Midwest
Michelle Smithen
Director
Dallas, TX
+1-214-871-1423 (office)
+1-214-213-2582 (mobile)
michelle.smithen@spglobal.com

Team Coverage



Commercial Team - LATAM

Team Leader



María Consuelo Perez Cavallazzi

Head of LATAM Sales: S&P Global Ratings
Mexico City, Mexico
+ 52 55 4357 5142
maria.cavallazzi@spglobal.com

Relationship Managers



Mexico, Central America & The Caribbean

Adrian Cuevas

Director
Mexico City, Mexico
+ 52 55 4450 3878
adrian.cuevas@spglobal.com



Mexico, Central America & The Caribbean

Eduardo González

Director
Mexico City, Mexico
+ 52 55 1485 6366
eduardo.gonzalez@spglobal.com



Brazil

Veronica Bellini

Director
São Paulo, Brazil
+ 55 11 98208 2306
veronica.bellini@spglobal.com



Brazil

Taís Barres

Director
São Paulo, Brazil
+ 55 11 9372 0930
tais.barres@spglobal.com



Brazil

Pedro Arlant

Director
São Paulo, Brazil
+ 55 11 91897 5914
parlant@spglobal.com



Southern Cone – Argentina, Uruguay, Paraguay, Peru, Bolivia, Ecuador and Chile

Matias Hoban

Director
Buenos Aires, Argentina
+ 54 911 3868 0052
matias.hoban@spglobal.com



Southern Cone – Argentina, Uruguay, Paraguay, Peru, Bolivia, Ecuador and Chile

Lorena Rossi

Director
Buenos Aires, Argentina
+ 54 11 6484 8763
lorena.rossi@spglobal.com

Colombia & Panama GS +BRC (NS)

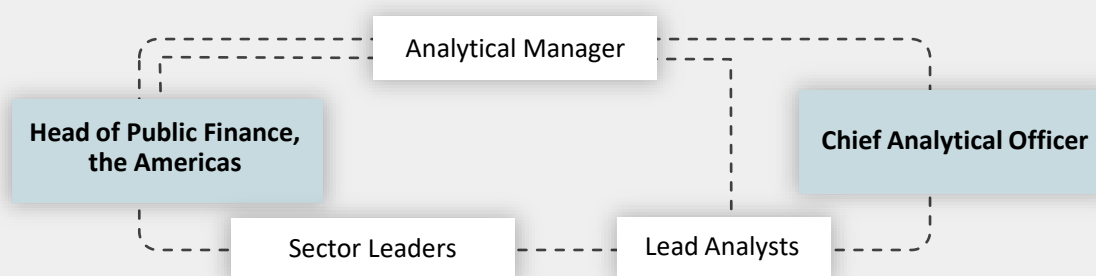
TBD



Charter Schools

For more than 20 years, our team has provided credit ratings, analyses and market insights for a diverse range of charter schools, private independent schools, and community colleges. Our analysts have extensive industry knowledge—many of them have prior experience in your sector—and our ratings reflect our deep understanding of the nuances that drive short- and long-term credit trends nationwide.

Interconnectivity of Our Team



Analytical Leaders



Analytical Manager

Luke Gildner
Managing Director
Charlotte, NC
+1-303-721-4124
luke.gildner@spglobal.com



Sector Leader

Jessica Wood
Managing Director
Chicago, IL
+1-312-233-7004
jessica.wood@spglobal.com



Head of Public Finance, the Americas

Matthew Reining
Managing Director
New York, NY
+1-212-438-3610
matthew.reining@spglobal.com



Chief Analytical Officer

Nora Wittstruck
Managing Director
New York, NY
+1-212-438-8589
nora.wittstruck@spglobal.com



Lead Analyst

David Holmes
Director
Houston, TX
+1-214-871-1427
david.holmes@spglobal.com



Lead Analyst

Amber Schafer
Director
Englewood, CO
+1-303-721-4238
amber.schafer@spglobal.com



Lead Analyst

Robert Tu, CFA
Director
San Francisco, CA
+1-415-371-5087
robert.tu@spglobal.com



Lead Analyst

Jesse Brady
Director
New York, NY
+1-212-438-7944
jesse.brady@spglobal.com

Analytical Team

Mel Brown

Associate Director
Chicago, IL
+1-312-233-7204
mel.brown@spglobal.com

Alexander Enriquez

Associate Director
Grand Rapids, MI
+1-214-871-1480
alexander.enriquez@spglobal.com

Sue Ryu

Senior Analyst
Chicago, IL
+1-312-233-7041
sue.ryu@spglobal.com

Joyce Jung

Associate Director
Englewood, CO
+1-212-438-0629
joyce.jung@spglobal.com

Mallie Lange

Senior Analyst
Houston, TX
+1-214-765-5861
mallie.lange@spglobal.com

Ryan Miller

Rating Analyst
Dallas, TX
+1-214-871-1408
ryan.miller@spglobal.com

Brian Marshall

Associate Director
Dallas, TX
+1-214-871-1414
brian.marshall@spglobal.com

Sadie Mazzola

Senior Analyst
New York, NY
+1-212-438-7434
sadie.mazzola@spglobal.com

Chase Ashworth

Associate Director
Englewood, CO
+1-303-721-4289
chase.ashworth@spglobal.com

John Miceli

Senior Analyst
Dallas, TX
+1-214-871-1471
john.miceli@spglobal.com

Market & Investor Outreach



Heather McArdle

Director
New York, NY
+1-212-438-3927
heather.mcardle@spglobal.com

Visit spglobal.com/uspfeducation to learn more about our work and see what we're thinking now.

The analyses, including ratings, of S&P Global Ratings are opinions and not statements of fact or recommendations to purchase, hold, or sell securities. They do not address the suitability of any security, and should not be relied on in making any investment decision. S&P Global Ratings does not act as a fiduciary or an investment advisor except where registered as such.

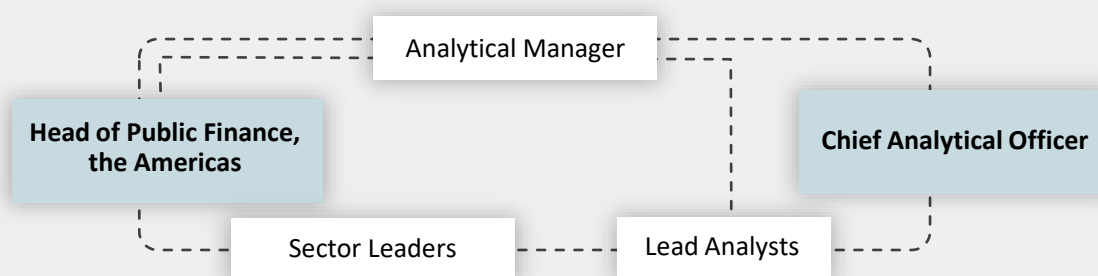
Copyright © 2025 by Standard & Poor's Financial Services LLC. All rights reserved.
STANDARD & POOR'S and S&P are registered trademarks of Standard & Poor's Financial Services LLC.

spglobal.com/ratings

Health Care

For more than 50 years, our team has provided credit ratings, analyses and market insights for a diverse range of notfor-profit hospitals and health systems, human service providers, and long-term care providers. Our analysts have extensive industry knowledge—many of them have prior experience in your sector—and our ratings reflect our deep understanding of the nuances that drive short- and long-term credit trends nationwide.

Interconnectivity of Our Team



Analytical Leaders



Analytical Manager

Stephen Infranco

Managing Director
New York, NY
+1-212-438-2025
stephen.infranco@spglobal.com



Lead Analyst

Anne Cosgrove

Director
New York, NY
+1-212-438-8202
anne.cosgrove@spglobal.com



Sector Leader

Suzie Desai

Managing Director
Chicago, IL
+1-312-233-7046
suzie.desai@spglobal.com



Lead Analyst

Cynthia Keller

Director
New York, NY
+1-212-438-2035
cynthia.keller@spglobal.com



Head of Public Finance, the Americas

Matthew Reining

Managing Director
New York, NY
+1-212-438-3610
matthew.reining@spglobal.com



Lead Analyst

Patrick Zagar

Director
Dallas, TX
+1-214-765-5883
patrick.zagar@spglobal.com



Chief Analytical Officer

Nora Wittstruck

Managing Director
New York, NY
+1-212-438-8589
nora.wittstruck@spglobal.com



Lead Analyst

Marc Bertrand

Director
Chicago, IL
+1-312-233-7116
marc.bertrand@spglobal.com

Analytical Team

Blake Fundingsland

Associate Director
Englewood, CO
+1-303-721-4703
blake.fundingsland@spglobal.com

David Mares

Senior Analyst
Englewood, CO
+1-303-912-9416
david.mares@spglobal.com

Chloe Pickett

Associate Director
Englewood, CO
+1-303-721-4122
chloe.pickett@spglobal.com

Concy Richards

Senior Analyst
Chicago, IL
+1-312-233-7024
concy.richards@spglobal.com

Aamna Shah

Associate Director
San Francisco, CA
+1-415-371-5034
aamna.shah@spglobal.com

Khushi Sutaria

Senior Analyst
New York, NY
+212-438-0237
khushi.sutaria@spglobal.com

Kay Sifferman

Associate Director
Houston, TX
+1-713-665-2215
kay.sifferman@spglobal.com

Marc Arcas

Associate Director
Raleigh, NC
+312-233-7069
marc.arcas@spglobal.com

Market & Investor Outreach



Heather McArdle

Director
New York, NY
+1-212-438-3927
heather.mcardle@spglobal.com

Visit spglobal.com/notforprofithealthcare to learn more about our work and see what we're thinking now.

The analyses, including ratings, of S&P Global Ratings are opinions and not statements of fact or recommendations to purchase, hold, or sell securities. They do not address the suitability of any security, and should not be relied on in making any investment decision. S&P Global Ratings does not act as a fiduciary or an investment advisor except where registered as such.

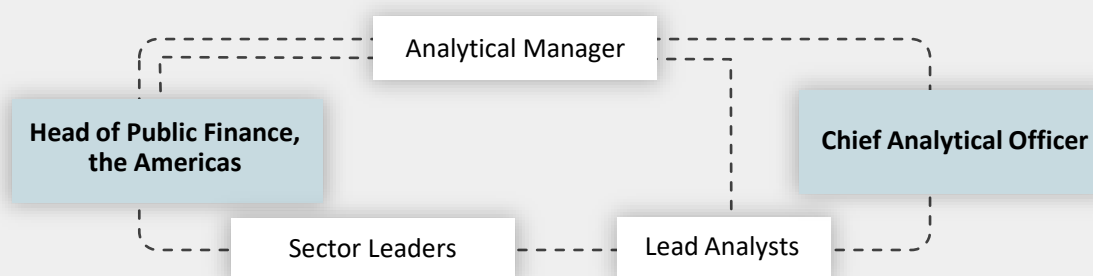
Copyright © 2025 by Standard & Poor's Financial Services LLC. All rights reserved.
STANDARD & POOR'S and S&P are registered trademarks of Standard & Poor's Financial Services LLC.

spglobal.com/ratings

Higher Education

For more than 50 years, our team has provided credit ratings, analyses and market insights for a diverse range of 501(c)(3) and cultural institutions, privatized student housing, public and private higher educational institutions. Our analysts have extensive industry knowledge—many of them have prior experience in your sector—and our ratings reflect our deep understanding of the nuances that drive short- and long-term credit trends nationwide.

Interconnectivity of Our Team



Analytical Leaders



Analytical Manager

Laura Kuffler-Macdonald

Managing Director
New York, NY
+1-212-438-2519
laura.kuffler.macdonald@spglobal.com



Sector Leader

Jessica Wood

Managing Director
Chicago, IL
+1-312-233-7004
jessica.wood@spglobal.com



Head of Public Finance, the Americas

Matthew Reining

Managing Director
New York, NY
+1-212-438-3610
matthew.reining@spglobal.com



Chief Analytical Officer

Nora Wittstruck

Managing Director
New York, NY
+1-212-438-8589
nora.wittstruck@spglobal.com



Lead Analyst

Jessica Goldman

Director
New York, NY
+1-212-438-6484
jessica.goldman@spglobal.com



Lead Analyst

Ken Rodgers

Director
New York, NY
+1-212-438-2087
ken.rodgers@spglobal.com



Lead Analyst

Stephanie Wang

Director
New York, NY
+1-212-438-3841
stephanie.wang@spglobal.com



Lead Analyst

Mary Ellen Wriedt

Director
San Francisco, CA
+1-415-371-5027
maryellen.wriedt@spglobal.com

Analytical Team

Nicholas Breeding

Associate Director
Englewood, CO
+1-212-438-3010
nicholas.breeding@spglobal.com

Steven Sather

Associate Director
Englewood, CO
+1-303-721-4962
steven.sather@spglobal.com

Travis Nauert

Senior Analyst
Memphis, TN
+1-212-438-0215
travis.nauert@spglobal.com

Nicholas Fortin

Associate Director
Boston, MA
+1-312-914-9629
nicholas.fortin@spglobal.com

Sean Wiley

Associate Director
Chicago, IL
+1-312-233-7050
sean.wiley@spglobal.com

Vicky Stavropoulos

Senior Analyst
Chicago, IL
+1-312-233-7035
vicky.stavropoulos@spglobal.com

Megan Kearns

Associate Director
Englewood, CO
+1-303-721-4643
megan.kearns@spglobal.com

Beth Bishop

Senior Analyst
Chicago, IL
+1-312-233-7141
beth.bishop@spglobal.com

Stefan Turcic

Senior Analyst
New York, NY
+1-551-225-2020
stefan.turcic@spglobal.com

Matthew Martin

Associate Director
New York, NY
+1-212-438-8227
matthew.martin@spglobal.com

Ginger Wodele

Senior Analyst
New York, NY
+1-212-438-7421
ginger.wodele@spglobal.com

Market & Investor Outreach



Heather McArdle

Director
New York, NY
+1-212-438-3927
heather.mcardle@spglobal.com

Visit spglobal.com/uspfeducation to learn more about our work and see what we're thinking now.

The analyses, including ratings, of S&P Global Ratings are opinions and not statements of fact or recommendations to purchase, hold, or sell securities. They do not address the suitability of any security, and should not be relied on in making any investment decision. S&P Global Ratings does not act as a fiduciary or an investment advisor except where registered as such.

Copyright © 2025 by Standard & Poor's Financial Services LLC. All rights reserved.
STANDARD & POOR'S and S&P are registered trademarks of Standard & Poor's Financial Services LLC.

spglobal.com/ratings

Housing

For more than 60 years, our team has provided credit ratings, analyses and market insights for a diverse range of community development financial institutions (CDFIs), housing finance agencies (HFAs), public housing authorities (PHAs), public or military housing providers. Our analysts have extensive industry knowledge— many of them have prior experience in your sector—and our ratings reflect our deep understanding of the nuances that drive short- and long-term credit trends nationwide.

Interconnectivity of Our Team



Analytical Leaders



Analytical Manager

Caroline West
Managing Director
Chicago, IL
+1-312-233-7047
caroline.west@spglobal.com



Lead Analyst

David Greenblatt
Director
New York, NY
+1-212-438-1383
david.greenblatt@spglobal.com



Sector Leader

Hannah Blitzer
Managing Director
New York, NY
+1-212-438-0311
hannah.blitzer@spglobal.com



Lead Analyst

Dan Pulter, CFA
Director
Englewood, CO
+1-303-721-4646
daniel.pulter@spglobal.com



Head of Public Finance, the Americas

Matthew Reining
Managing Director
New York, NY
+1-212-438-3610
matthew.reining@spglobal.com



Lead Analyst

Stuart Nicol
Director
Chicago, IL
+1-312-233-7007
stuart.nicol@spglobal.com



Chief Analytical Officer

Nora Wittstruck
Managing Director
New York, NY
+1-212-438-8589
nora.wittstruck@spglobal.com



Lead Analyst

Shirley Flores
Director
New York, NY
+1-212-438-0986
shirley.flores@spglobal.com

Analytical Team

Raymond Kim

Associate Director
New York, NY
+1-212-438-2005
raymond.kim@spglobal.com

Lauren Carter

Senior Analyst
Boston, MA
+1-617-283-3863
lauren.carter@spglobal.com

Suyun (Susie) Qu

Associate Director
Chicago, IL
+1-312-233-7018
suyun.qu@spglobal.com

Kyle Fecik

Senior Analyst
Chicago, IL
+1-562-751-0735
kyle.fecik@spglobal.com

Musharrof Ahmed

Senior Analyst
New York, NY
+1-551-367-4821
musharrof.ahmed@spglobal.com

John Mariotti

Senior Analyst
Englewood, CO
+1-303-721-4463
john.mariotti@spglobal.com

Emily Avila

Senior Analyst
New York, NY
+1-212-438-1824
emily.avila@spglobal.com

Patience Wall

Senior Analyst
New York, NY
+1-212-438-1404
patience.wall@spglobal.com

Market & Investor Outreach



Heather McArdle

Director
New York, NY
+1-212-438-3927
heather.mcardle@spglobal.com

Visit spglobal.com/uspfhousing to learn more about our work and see what we're thinking now.

The analyses, including ratings, of S&P Global Ratings are opinions and not statements of fact or recommendations to purchase, hold, or sell securities. They do not address the suitability of any security, and should not be relied on in making any investment decision. S&P Global Ratings does not act as a fiduciary or an investment advisor except where registered as such.

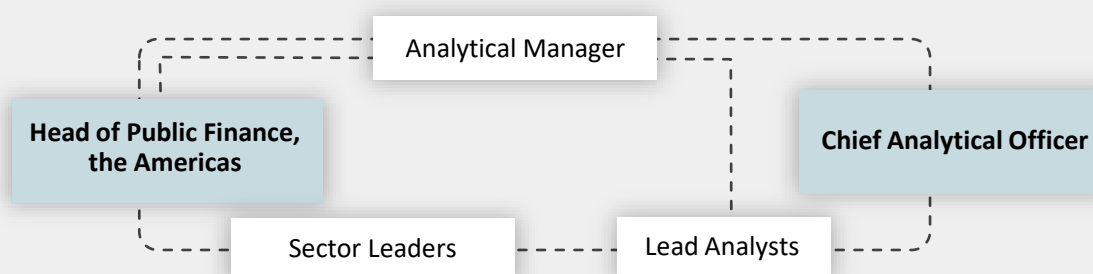
Copyright © 2025 by Standard & Poor's Financial Services LLC. All rights reserved.
STANDARD & POOR'S and S&P are registered trademarks of Standard & Poor's Financial Services LLC.

spglobal.com/ratings

Local Governments – Central

For more than 60 years, our team has provided credit ratings, analyses and market insights for a diverse range of local governments including boroughs, cities, counties, local and regional authorities, school districts, special districts, towns, townships and villages. Our analysts have extensive industry knowledge—many of them have prior experience in your sector—and our ratings reflect our deep understanding of the nuances that drive short- and long-term credit trends in the central region.

Interconnectivity of Our Team



Analytical Leaders



Analytical Manager

Andrew Bredeson
Managing Director
Englewood, CO
+1-303-721-4825
andrew.bredeson@spglobal.com



Lead Analyst

John Sauter
Director
Chicago, IL
+1-312-233-7027
john.sauter@spglobal.com



Sector Leader

Jane Ridley
Managing Director
Chicago, IL
+1-312-233-7192
jane.ridley@spglobal.com



Lead Analyst

Anna Uboytseva
Director
Salt Lake City, UT
+1-312-233-7067
anna.uboytseva@spglobal.com



Head of Public Finance, the Americas

Matthew Reining
Managing Director
New York, NY
+1-212-438-3610
matthew.reining@spglobal.com



Lead Analyst

Bobby Otter
Director
Toronto, ON
+1-647-480-3517
robert.otter@spglobal.com



Chief Analytical Officer

Nora Wittstruck
Managing Director
New York, NY
+1-212-438-8589
nora.wittstruck@spglobal.com



Lead Analyst

Ben Gallovic
Director
Cleveland, OH
+1-312-233-7070
benjamin.gallovic@spglobal.com

Analytical Team

Diana Cooke

Associate Director
Chicago, IL
+1-312-233-7052
diana.cooke@spglobal.com

Moreen Skyers-Gibbs

Associate Director
New York, NY
+1-212-438-1734
moreen.skyers-gibbs@spglobal.com

Alex Tomczuk

Senior Analyst
Hartford, CT
+1-612-513-2431
alex.tomczuk@spglobal.com

Stephanie Megas

Associate Director
Englewood, CO
+1-303-721-4248
stephanie.megas@spglobal.com

Kaiti Vartholomaivos

Associate Director
New York, NY
+1-212-438-0866
kaiti.vartholomaivos@spglobal.com

Steven Waldeck

Senior Analyst
Columbus, OH
+1-617-530-8128
steven.waldeck@spglobal.com

Mike Mooney

Associate Director
New York, NY
+1-212-438-4943
michael.mooney1@spglobal.com

Mona Elfar

Senior Analyst
New York, NY
+1-212-438-0963
mona.elfar@spglobal.com

Adam Sachs

Rating Analyst
Chicago, IL
+1-312-233-7186
adam.sachs@spglobal.com

Market & Investor Outreach



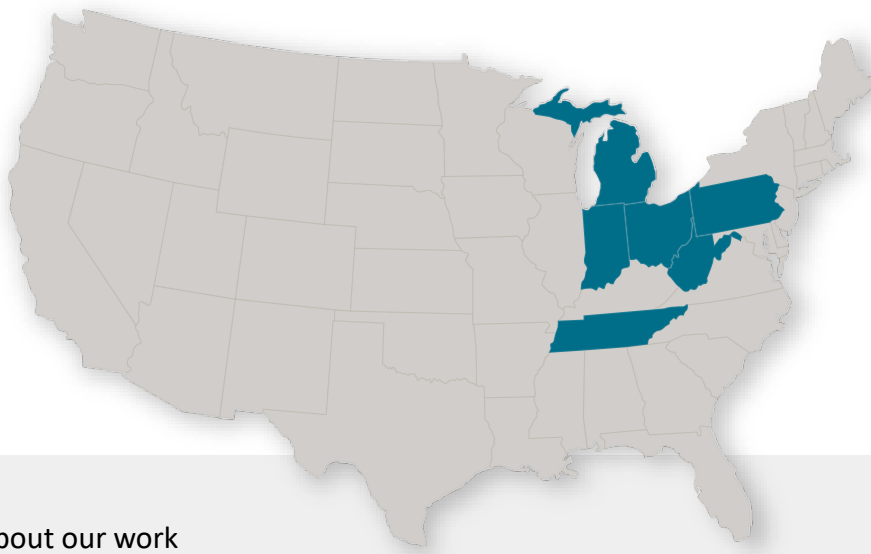
Heather McArdle

Director
New York, NY
+1-212-438-3927
heather.mcardle@spglobal.com

Emma Steyaert

Rating Analyst
Chicago, IL
+1-312-233-7012
emma.steyaert@spglobal.com

If you'd like to request a rating from our team, please email us at centralratingreq@spglobal.com.



Visit spglobal.com/uslocalgovs to learn more about our work and see what we're thinking now.

The analyses, including ratings, of S&P Global Ratings are opinions and not statements of fact or recommendations to purchase, hold, or sell securities. They do not address the suitability of any security, and should not be relied on in making any investment decision. S&P Global Ratings does not act as a fiduciary or an investment advisor except where registered as such.

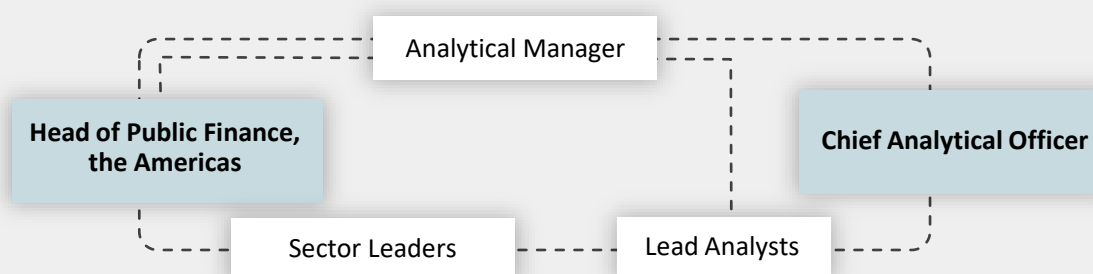
Copyright © 2025 by Standard & Poor's Financial Services LLC. All rights reserved.
STANDARD & POOR'S and S&P are registered trademarks of Standard & Poor's Financial Services LLC.

spglobal.com/ratings

Local Governments – East

For more than 60 years, our team has provided credit ratings, analyses and market insights for a diverse range of local governments including boroughs, cities, counties, local and regional authorities, school districts, special districts, towns, townships and villages. Our analysts have extensive industry knowledge—many of them have prior experience in your sector—and our ratings reflect our deep understanding of the nuances that drive short- and long-term credit trends in the eastern region.

Interconnectivity of Our Team



Analytical Leaders



Analytical Manager
Charlene Butterfield
Managing Director
New York, NY
+1-212-438-2741
charlene.butterfield@spglobal.com



Lead Analyst
Jennifer Garza
Director
Dallas, TX
+1-214-871-1422
jennifer.garza@spglobal.com



Sector Leader
Jane Ridley
Managing Director
Chicago, IL
+1-312-233-7192
jane.ridley@spglobal.com



Lead Analyst
Victor Medeiros
Director
Boston, MA
+1-617-530-8305
victor.medeiros@spglobal.com



Head of Public Finance, the Americas
Matthew Reining
Managing Director
New York, NY
+1-212-438-3610
matthew.reining@spglobal.com



Lead Analyst
Christian Richards
Director
Washington, D.C.
+1-617-530-8325
christian.richards@spglobal.com



Chief Analytical Officer
Nora Wittstruck
Managing Director
New York, NY
+1-212-438-8589
nora.wittstruck@spglobal.com



Lead Analyst
Stephen Doyle
Director
Dallas, TX
+1-214-765-5886
stephen.doyle@spglobal.com

Analytical Team

Tim Barrett

Associate Director
Washington, DC
+1-202-942-8711
timothy.barrett@spglobal.com

Anthony Polanco

Associate Director
Boston, MA
+1-617-530-8234
anthony.polanco@spglobal.com

Rahul Chakraborty

Senior Analyst
New York, NY
+1-212-438-1864
rahul.chakraborty@spglobal.com

Lauren Freire

Associate Director
New York, NY
+1-212-438-7854
lauren.freire@spglobal.com

Melissa Stoloff

Associate Director
Boston, MA
+1-657-530-8030
melissa.stoloff@spglobal.com

Tyler Fitman

Senior Analyst
Boston, MA
+1-617-530-8021
tyler.fitman@spglobal.com

Michael Parker

Associate Director
Englewood, CO
+1-303-721-4701
michael.parker@spglobal.com

Dalia Bereket

Senior Analyst
New York, NY
+1-212-438-1933
dalia.bereket@spglobal.com

Michael Ryter

Senior Analyst
Chicago, IL
+1-312-233-7016
michael.ryter@spglobal.com

Dylan Lindow

Rating Analyst
Chicago, IL
+1-617-530-8033
dylan.lindow@spglobal.com

Market & Investor Outreach



Heather McArdle

Director
New York, NY
+1-212-438-3927
heather.mcardle@spglobal.com

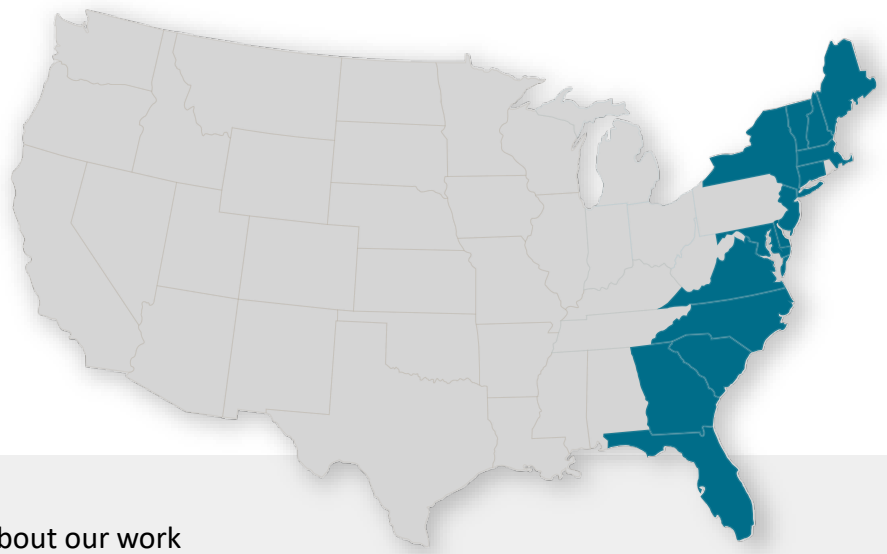
If you'd like to request a rating from our team, please email us at eastratingsreq@spglobal.com.

Visit spglobal.com/uslocalgovs to learn more about our work and see what we're thinking now.

The analyses, including ratings, of S&P Global Ratings are opinions and not statements of fact or recommendations to purchase, hold, or sell securities. They do not address the suitability of any security, and should not be relied on in making any investment decision. S&P Global Ratings does not act as a fiduciary or an investment advisor except where registered as such.

Copyright © 2025 by Standard & Poor's Financial Services LLC. All rights reserved.
STANDARD & POOR'S and S&P are registered trademarks of Standard & Poor's Financial Services LLC.

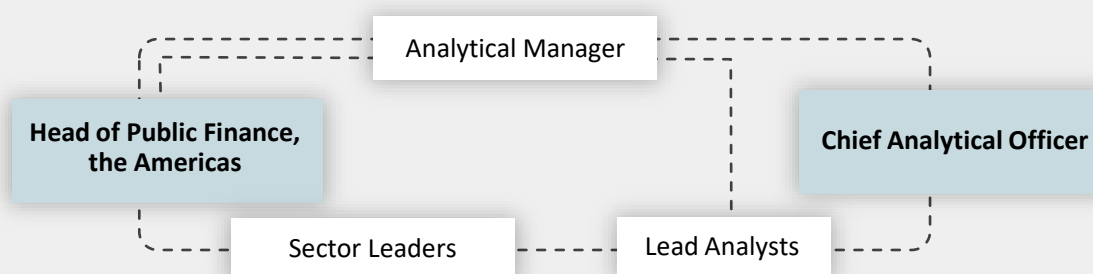
spglobal.com/ratings



Local Governments – Midwest

For more than 60 years, our team has provided credit ratings, analyses and market insights for a diverse range of local governments including boroughs, cities, counties, local and regional authorities, school districts, special districts, towns, townships and villages. Our analysts have extensive industry knowledge— many of them have prior experience in another sector—and our ratings reflect our deep understanding of the nuances that drive short- and long-term credit trends in the midwestern region.

Interconnectivity of Our Team



Analytical Leaders



Analytical Manager
Blake Yocom
Managing Director
Chicago, IL
+1-312-233-7056
blake.yocom@spglobal.com



Lead Analyst
Ying Huang
Director
San Francisco, CA
+1-415-371-5008
ying.huang@spglobal.com



Sector Leader
Sarah Sullivan
Managing Director
Austin, Texas
+1-415-371-5051
sarah.sullivan@spglobal.com



Lead Analyst
Scott Nees
Director
Chicago, IL
+1-312-233-7064
scott.nees@spglobal.com



Head of Public Finance, the Americas
Matthew Reining
Managing Director
New York, NY
+1-212-438-3610
matthew.reining@spglobal.com



Lead Analyst
Helen Samuelson
Director
Chicago, IL
+1-312-233-7011
helen.samuelson@spglobal.com



Chief Analytical Officer
Nora Wittstruck
Managing Director
New York, NY
+1-212-438-8589
nora.wittstruck@spglobal.com



Lead Analyst
A.J. Truckenmiller
Director
Chicago, IL
+1-312-233-7032
andrew.truckenmiller@spglobal.com

Analytical Team

Emma Drilias

Associate Director
Milwaukee, WI
+1-312-233-7132
emma.drilias@spglobal.com

Alison Kaye

Senior Analyst
Chicago, IL
+1-312-233-7162
alison.kaye@spglobal.com

Mike Lensky

Rating Analyst
Englewood, CO
+1-303-721-4138
mike.lensky@spglobal.com

Jessica Olejak

Associate Director
Chicago, IL
+1-312-233-7068
jessica.olejak@spglobal.com

Rebecca Roman

Senior Analyst
Chicago, IL
+1-312-233-7020
rebecca.roman@spglobal.com

Tyler Livesey

Rating Analyst
Chicago, IL
+1-312-233-7185
tyler.livesey@spglobal.com

Coral Schoonejans

Associate Director
Englewood, CO
+1-303-721-4948
coral.schoonejans@spglobal.com

Charlie Salmans

Senior Analyst
Chicago, IL
+1-312-233-7039
charlie.salmans@spglobal.com

David Smith

Associate Director
Chicago, IL
+1-312-233-7029
david.smith@spglobal.com

Alex Swanson

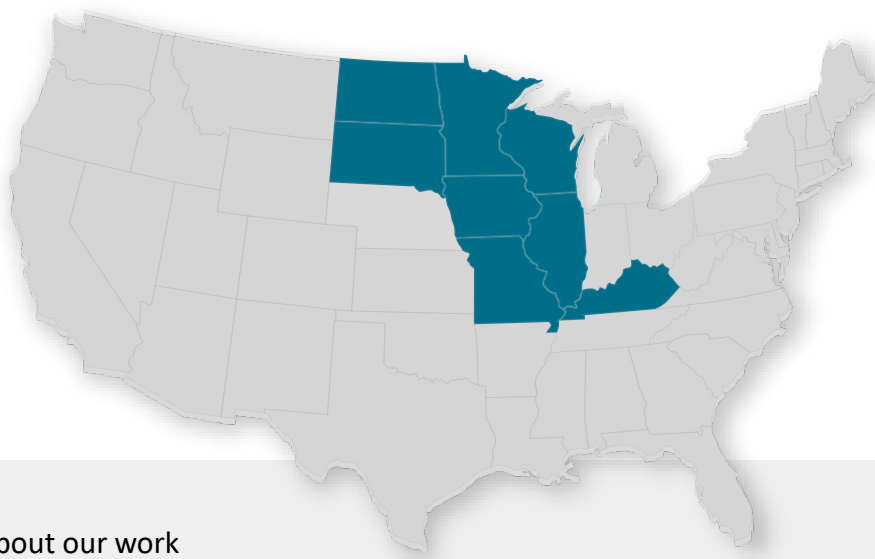
Senior Analyst
Englewood, CO
+1-303-721-4323
alex.swanson@spglobal.com

Market & Investor Outreach



Heather McArdle

Director
New York, NY
+1-212-438-3927
heather.mcardle@spglobal.com



If you'd like to request a rating from our team, please email us at spmidwestreq@spglobal.com.

Visit spglobal.com/uslocalgovs to learn more about our work and see what we're thinking now.

The analyses, including ratings, of S&P Global Ratings are opinions and not statements of fact or recommendations to purchase, hold, or sell securities. They do not address the suitability of any security, and should not be relied on in making any investment decision. S&P Global Ratings does not act as a fiduciary or an investment advisor except where registered as such.

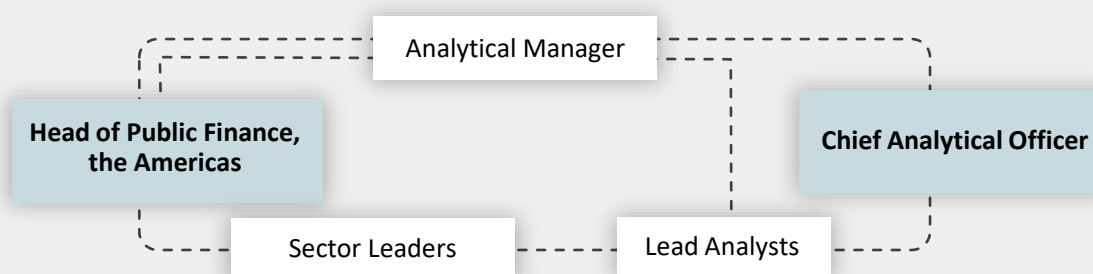
Copyright © 2025 by Standard & Poor's Financial Services LLC. All rights reserved.
STANDARD & POOR'S and S&P are registered trademarks of Standard & Poor's Financial Services LLC.

spglobal.com/ratings

Local Governments – South

For more than 60 years, our team has provided credit ratings, analyses and market insights for a diverse range of local governments including boroughs, cities, counties, local and regional authorities, school districts, special districts, towns, townships and villages. Our analysts have extensive industry knowledge— many of them have prior experience in your sector—and our ratings reflect our deep understanding of the nuances that drive short- and long-term credit trends in the southwestern region.

Interconnectivity of Our Team



Analytical Leaders



Analytical Manager

Joshua Travis

Managing Director
Dallas, TX
+1-972-367-3340
joshua.travis@spglobal.com



Lead Analyst

Kristin Button

Director
Dallas, TX
+1-214-765-5862
kristin.button@spglobal.com



Sector Leader

Jane Ridley

Managing Director
Chicago, IL
+1-312-233-7192
jane.ridley@spglobal.com



Lead Analyst

Misty Newland

Director
San Francisco, CA
+1-415-371-5073
misty.newland@spglobal.com



Head of Public Finance, the Americas

Matthew Reining

Managing Director
New York, NY
+1-212-438-3610
matthew.reining@spglobal.com



Lead Analyst

Karolina Norris

Director
Dallas, TX
+1-214-871-3341
karolina.norris@spglobal.com



Chief Analytical Officer

Nora Wittstruck

Managing Director
New York, NY
+1-212-438-8589
nora.wittstruck@spglobal.com



Lead Analyst

Alex Louie

Director
Englewood, CO
+1-303-721-4559
alex.louie@spglobal.com

Analytical Team

Melissa Banuelos

Associate Director
Dallas, TX
+1-214-871-1403
melissa.banuelos@spglobal.com

Katy Vazquez

Associate Director
New York, NY
+1-212-438-1047
katy.vazquez@spglobal.com

Adam Steele

Senior Analyst
Englewood, CO
+1-303-721-4917
adam.steele@spglobal.com

Sam Krouse

Associate Director
Dallas, TX
+1-214-871-1409
sam.krouse@spglobal.com

Jackie Dove

Senior Analyst
Englewood, CO
+1-303-721-4317
jackie.dove@spglobal.com

Allie Jacobson

Senior Analyst
Englewood, CO
+1-303-721-4242
allie.jacobson@spglobal.com

Calix Sholander

Associate Director
Englewood, CO
+1-303-721-4255
calix.sholander@spglobal.com

Lauren Levy

Senior Analyst
Englewood, CO
+1-303-721-4956
lauren.levy@spglobal.com

Derrick Rayford

Rating Analyst
Chicago, IL
+1-708-954-7558
derrick.rayford@spglobal.com

Lora Abeyta

Rating Analyst
Englewood, CO
+1-720-315-8212
lora.abeyta@spglobal.com

Market & Investor Outreach



Heather McArdle

Director
New York, NY
+1-212-438-3927
heather.mcardle@spglobal.com

If you'd like to request a rating from our team, please email us at swratingsreq@spglobal.com.

Visit spglobal.com/uslocalgovs to learn more about our work and see what we're thinking now.

The analyses, including ratings, of S&P Global Ratings are opinions and not statements of fact or recommendations to purchase, hold, or sell securities. They do not address the suitability of any security, and should not be relied on in making any investment decision. S&P Global Ratings does not act as a fiduciary or an investment advisor except where registered as such.

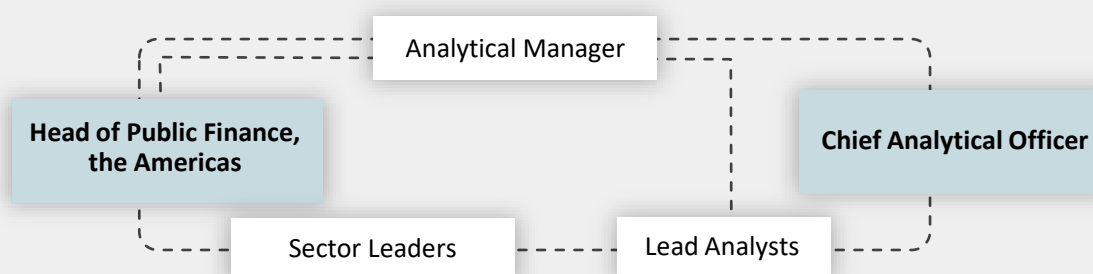
Copyright © 2025 by Standard & Poor's Financial Services LLC. All rights reserved.
STANDARD & POOR'S and S&P are registered trademarks of Standard & Poor's Financial Services LLC.

spglobal.com/ratings

Local Governments – West

For more than 60 years, our team has provided credit ratings, analyses and market insights for a diverse range of local governments including boroughs, cities, counties, local and regional authorities, school districts, special districts, towns, townships and villages. Our analysts have extensive industry knowledge— many of them have prior experience in your sector—and our ratings reflect our deep understanding of the nuances that drive short- and long-term credit trends in the western region.

Interconnectivity of Our Team



Analytical Leaders



Analytical Manager

Avani Parikh

Managing Director
Phoenix, AZ
+1-212-438-1133
avani.parikh@spglobal.com



Lead Analyst

Alyssa Farrell

Director
Englewood, CO
+1-303-721-4184
alyssa.farrell@spglobal.com



Sector Leader

Sarah Sullivan

Managing Director
Austin, Texas
+1-415-371-5051
sarah.sullivan@spglobal.com



Lead Analyst

Chris Morgan

Director
San Francisco, CA
+1-415-371-5032
chris.morgan@spglobal.com



Head of Public Finance, the Americas

Matthew Reining

Managing Director
New York, NY
+1-212-438-3610
matthew.reining@spglobal.com



Lead Analyst

Li Yang

Director
San Francisco, CA
+1-415-371-5024
li.yang@spglobal.com



Chief Analytical Officer

Nora Wittstruck

Managing Director
New York, NY
+1-212-438-8589
nora.wittstruck@spglobal.com



Lead Analyst

Amahad Brown

Director
Dallas, TX
+1-214-765-5876
amahad.brown@spglobal.com

Analytical Team

Daniel Golliday

Associate Director
Dallas, TX
+1-214-765-5881
daniel.golliday@spglobal.com

Krystal Tena

Associate Director
New York, NY
+1-212-438-1628
krystal.tena@spglobal.com

Brenea Gordon

Senior Analyst
Chicago, IL
+1-312-233-7048
brenea.gordon@spglobal.com

Virginia Murillo

Associate Director
San Francisco, CA
+1-415-371-5098
virginia.murillo@spglobal.com

Treasure Walker

Associate Director
Englewood, CO
+1-303-721-4531
treasure.walker@spglobal.com

Cenisa Gutierrez

Senior Analyst
San Francisco, CA
+1-415-371-5022
cenisa.gutierrez@spglobal.com

Brian Phuvan

Associate Director
San Francisco, CA
+1-415-371-5094
brian.phuvan@spglobal.com

Caroline Baird

Senior Analyst
Dallas, TX
+1-214-468-3496
caroline.baird@spglobal.com

Malcolm Simmons

Senior Analyst
San Francisco, CA
+1-312-233-7081
malcolm.simmons@spglobal.com

Kyron Smith

Senior Analyst
Chicago, IL
+1-312-233-7065
kyron.smith@spglobal.com

Market & Investor Outreach



Heather McArdle

Director
New York, NY
+1-212-438-3927
heather.mcardle@spglobal.com

If you'd like to request a rating from our team, please email us at westlg@spglobal.com.

Visit spglobal.com/uslocalgovs to learn more about our work and see what we're thinking now.

The analyses, including ratings, of S&P Global Ratings are opinions and not statements of fact or recommendations to purchase, hold, or sell securities. They do not address the suitability of any security, and should not be relied on in making any investment decision. S&P Global Ratings does not act as a fiduciary or an investment advisor except where registered as such.

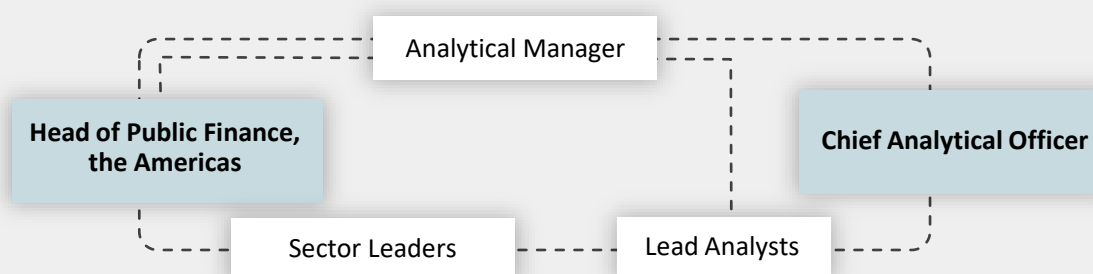
Copyright © 2025 by Standard & Poor's Financial Services LLC. All rights reserved.
STANDARD & POOR'S and S&P are registered trademarks of Standard & Poor's Financial Services LLC.

spglobal.com/ratings

State Governments & Transportation

For more than 60 years, our team has provided credit ratings, analyses and market insights for a diverse range of pension funds, state governmental authorities, states, airports, ports, bridges, toll road operators, transit systems, and parking systems. Our analysts have extensive industry knowledge—many of them have prior experience in your sector—and our ratings reflect our deep understanding of the nuances that drive short- and long-term credit trends nationwide.

Interconnectivity of Our Team



Analytical Leaders



Analytical Manager

Sussan Corson
Managing Director
New York, NY
+1-212-438-2014
sussan.corson@spglobal.com



Sector Leader, States

Geoff Buswick
Managing Director
Boston, MA
+1-617-530-8311
geoffrey.buswick@spglobal.com



Sector Leader, Transportation

Kurt Forsgren
Managing Director
Boston, MA
+1-617-530-8308
kurt.forsgren@spglobal.com



Head of Public Finance, the Americas

Matthew Reining
Managing Director
New York, NY
+1-212-438-3610
matthew.reining@spglobal.com



Chief Analytical Officer

Nora Wittstruck
Managing Director
New York, NY
+1-212-438-8589
nora.wittstruck@spglobal.com



Lead Analyst

Ladunni Okolo
Director
Dallas, TX
+1-214-765-5878
ladunni.okolo@spglobal.com



Lead Analyst

Oscar Padilla
Director
Dallas, TX
+1-214-871-1405
oscar.padilla@spglobal.com



Lead Analyst

Joseph Pezzimenti
Director
New York, NY
+1-212-438-2038
joseph.pezzimenti@spglobal.com



Lead Analyst

Thomas Zemetis
Director
New York, NY
+1-212-438-1172
thomas.zemetis@spglobal.com



Lead Analyst

Kevin Archer
Director
Los Angeles, CA
+1-415-371-5031
kevin.archer@spglobal.com

Analytical Team

Kayla Smith Ashworth

Associate Director
Englewood, CO
+1-303-721-4450
kayla.smith@spglobal.com

Kenneth Biddison

Associate Director
Englewood, CO
+1-303-721-4321
kenneth.biddison@spglobal.com

Savannah Gilmore

Associate Director
Englewood, CO
+1-303-721-4132
savannah.gilmore2@spglobal.com

Rob Marker

Associate Director
Englewood, CO
+1-303-721-4264
rob.marker@spglobal.com

Scott Shad

Associate Director
Englewood, CO
+1-303-721-4941
scott.shad@spglobal.com

Bikram Dhaliwal

Senior Analyst
Dallas, TX
+1-214-468-3493
bikram.dhaliwal@spglobal.com

Quinn Rees

Senior Analyst
New York, NY
+1-212-438-2526
quinn.rees@spglobal.com

Andrew Stafford

Senior Analyst
New York, NY
+1-212-438-1937
andrew.stafford1@spglobal.com

Market & Investor Outreach



Heather McArdle

Director
New York, NY
+1-212-438-3927
heather.mcardle@spglobal.com

Visit spglobal.com/states to learn more about our work and see what we're thinking now.

The analyses, including ratings, of S&P Global Ratings are opinions and not statements of fact or recommendations to purchase, hold, or sell securities. They do not address the suitability of any security, and should not be relied on in making any investment decision. S&P Global Ratings does not act as a fiduciary or an investment advisor except where registered as such.

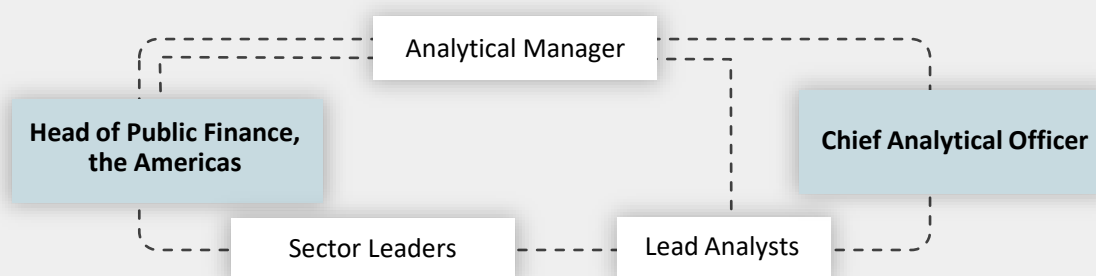
Copyright © 2025 by Standard & Poor's Financial Services LLC. All rights reserved.
STANDARD & POOR'S and S&P are registered trademarks of Standard & Poor's Financial Services LLC.

spglobal.com/ratings

Municipal & Cooperative Power

For more than 60 years, our team has provided credit ratings, analyses and market insights for a diverse range of public power and electric cooperative utilities. Our analysts have extensive industry knowledge—many of them have prior experience in your sector—and our ratings reflect our deep understanding of the nuances that drive short- and long-term credit trends nationwide.

Interconnectivity of Our Team



Analytical Leaders



Analytical Manager
Tiffany Tribbitt
Managing Director
New York, NY
+1-212-438-8218
tiffany.tribbitt@spglobal.com



Lead Analyst
Paul Dyson
Director
Austin, TX
+1-415-371-5079
paul.dyson@spglobal.com



Sector Leader
David Bodek
Managing Director
New York, NY
+1-212-438-7969
david.bodek@spglobal.com



Lead Analyst
Scott Sagen
Director
Austin, TX
+1-212-438-0272
scott.sagen@spglobal.com



Head of Public Finance, the Americas
Matthew Reining
Managing Director
New York, NY
+1-212-438-3610
matthew.reining@spglobal.com



Lead Analyst
Alexandra Rozgonyi
Director
Englewood, CO
+1-303-721--4824
alexandra.rozgonyi@spglobal.com



Chief Analytical Officer
Nora Wittstruck
Managing Director
New York, NY
+1-212-438-8589
nora.wittstruck@spglobal.com

Analytical Team

Timothy Meernik

Associate Director
Englewood, CO
+1-303-721-4786
timothy.meernik@spglobal.com

Doug Snider

Associate Director
Englewood, CO
+1-303-721-4709
doug.snider@spglobal.com

Lauren Hartman

Senior Analyst
Englewood, CO
+1-303-217-5681
lauren.hartman@spglobal.com

Stephanie Linnet

Senior Analyst
Englewood, CO
+1-303-721-4393
stephanie.linnet@spglobal.com

Valentina Protasenko

Senior Analyst
Chicago, IL
+1-312-233-7085
valentina.protasenko@spglobal.com

Market & Investor Outreach



Heather McArdle

Director
New York, NY
+1-212-438-3927
heather.mcardle@spglobal.com

Visit spglobal.com/uspfutilities to learn more about our work and see what we're thinking now.

The analyses, including ratings, of S&P Global Ratings are opinions and not statements of fact or recommendations to purchase, hold, or sell securities. They do not address the suitability of any security, and should not be relied on in making any investment decision. S&P Global Ratings does not act as a fiduciary or an investment advisor except where registered as such.

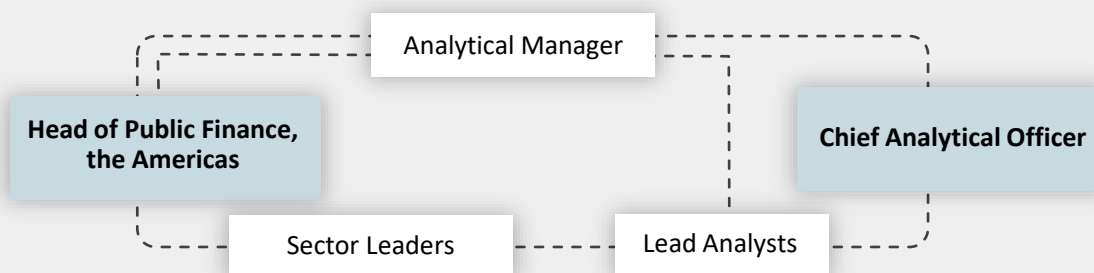
Copyright © 2025 by Standard & Poor's Financial Services LLC. All rights reserved.
STANDARD & POOR'S and S&P are registered trademarks of Standard & Poor's Financial Services LLC.

spglobal.com/ratings

Utility Revenue

For more than 60 years, our team has provided credit ratings, analyses and market insights for a diverse range of water, wastewater, and solidwaste utilities. Our analysts have extensive industry knowledge—many of them have prior experience in your sector—and our ratings reflect our deep understanding of the nuances that drive short- and long-term credit trends nationwide.

Interconnectivity of Our Team



Analytical Leaders



Analytical Manager

Jennifer Boyd

Managing Director
Chicago, IL
+1-312-233-7040
jennifer.boyd@spglobal.com



Sector Leader

Kurt Forsgren

Managing Director
Boston, MA
+1-617-530-8308
kurt.forsgren@spglobal.com



Head of Public Finance, the Americas

Matthew Reining

Managing Director
New York, NY
+1-212-438-3610
matthew.reining@spglobal.com



Chief Analytical Officer

Nora Wittstruck

Managing Director
New York, NY
+1-212-438-8589
nora.wittstruck@spglobal.com



Lead Analyst

Katelyn Kerley

Director
Englewood, CO
+1-303-721-4683
katelyn.kerley@spglobal.com



Lead Analyst

Edward McGlade

Director
New York, NY
+1-212-438-2061
edward.mcglade@spglobal.com



Lead Analyst

Chloe Weil

Director
San Francisco, CA
+1-415-371-5026
chloe.weil@spglobal.com

Analytical Team

Malcolm D'Silva

Associate Director
Englewood, CO
+1-303-721-4526
malcom.dsilva@spglobal.com

Chelsy Shipman

Associate Director
Dallas, TX
+1-214-871-1417
chelsy.shipman@spglobal.com

Danielle Leonardis

Associate Director
New York, NY
+1-212-438-2053
danielle.leonardis@spglobal.com

Joshua Rasay

Senior Analyst
Washington D.C.
+1-202-383-2046
stefen.joshua.rasay@spglobal.com

Jaime Blansit

Associate Director
Englewood, CO
+1-303-721-4279
jaime.blansit@spglobal.com

Sofia Damer-Salas

Rating Analyst
Chicago, IL
+1-312-233-7171
sofie.damersalas@spglobal.com

Alan Shabatay

Associate Director
New York, NY
+1-212-438-9025
alan.shabatay@spglobal.com

Market & Investor Outreach



Heather McArdle

Director
New York, NY
+1-212-438-3927
heather.mcardle@spglobal.com

If you'd like to request a rating from our team, please email us at uspfutilities@spglobal.com.

Visit spglobal.com/uspfutilities to learn more about our work and see what we're thinking now.

The analyses, including ratings, of S&P Global Ratings are opinions and not statements of fact or recommendations to purchase, hold, or sell securities. They do not address the suitability of any security, and should not be relied on in making any investment decision. S&P Global Ratings does not act as a fiduciary or an investment advisor except where registered as such.

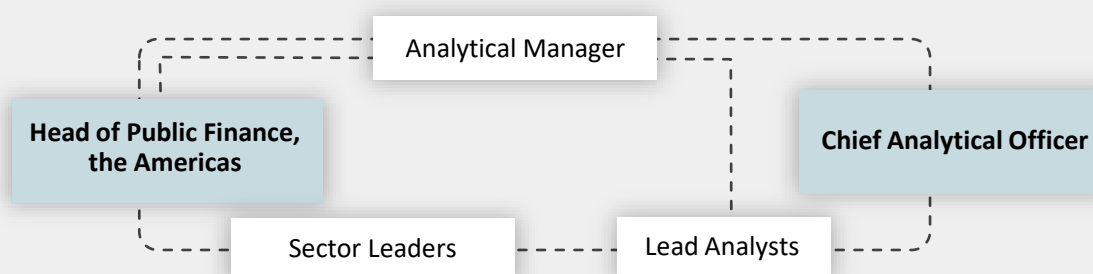
Copyright © 2025 by Standard & Poor's Financial Services LLC. All rights reserved.
STANDARD & POOR'S and S&P are registered trademarks of Standard & Poor's Financial Services LLC.

spglobal.com/ratings

Cross Analytical Practice Expertise

For more than 60 years, our team has provided credit ratings, analyses and market insights for a diverse range of public finance issuers. This team is comprised of analysts from across USPF with expertise in each sector, including local governments, states, public power, utilities, transportation, housing, municipal pools, health care, higher education and charters. By working together, this team supports deep analysis for ratings across different issuer and security types.

Interconnectivity of Our Team



Analytical Leaders



Analytical Manager
Felix Winnekens
Managing Director
New York, NY
+1-212-438-0313
felix.winnekens@spglobal.com



Sector Leader
Sarah Sullivant
Managing Director
Austin, Texas
+1-415-371-5051
sarah.sullivant@spglobal.com



Head of Public Finance, the Americas
Matthew Reining
Managing Director
New York, NY
+1-212-438-3610
matthew.reining@spglobal.com



Chief Analytical Officer
Nora Wittstruck
Managing Director
New York, NY
+1-212-438-8589
nora.wittstruck@spglobal.com



Lead Analyst
Peter Murphy
Director
New York, NY
+1-212-438-2065
peter.murphy@spglobal.com



Lead Analyst
Autumn Mascio
Director
New York, NY
+1-212-438-2821
autumn.mascio@spglobal.com



Lead Analyst
John Kennedy
Director
Chicago, IL
+1-312-233-7088
john.kennedy@spglobal.com



Lead Analyst
Kimberly Barrett
Director
Englewood, CO
+1-303-721-4446
kimberly.barrett@spglobal.com

Municipal Pensions



Todd Kanaster, ASA, FCA, MAAA

Director, Municipal Pensions
Englewood, CO
+1-303-721-4490
todd.kanaster@spglobal.com

Analytical Team

Carolina Caballero

Associate Director
Buenos Aires
+54 11 4891 2118
carolina.caballero@spglobal.com

Virginia Murillo

Associate Director
San Francisco, CA
+1-415-371-5098
virginia.murillo@spglobal.com

Phillip Peña

Associate Director
San Francisco, CA
+1-415-371-5039
phillip.pena@spglobal.com

Emily Powers

Associate Director
Albuquerque, NM
+1-312-233-7030
emily.powers@spglobal.com

John Schulz

Associate Director
Englewood, CO
+1-303-721-4385
john.schulz@spglobal.com

Joseph Vodziak

Associate Director
Chicago, IL
+1-312-233-7094
joseph.vodziak@spglobal.com

Kaiti Wang

Associate Director
New York, NY
+1-212-438-0671
kaiti.wang@spglobal.com

Constanza Chamas

Rating Analyst
Mexico City
+52 55 1037 5256
c.chamas@spglobal.com

Market & Investor Outreach



Heather McArdle

Director
New York, NY
+1-212-438-3927
heather.mcardle@spglobal.com

Visit spglobal.com/uspublicfinance to learn more about our work and see what we're thinking now.

The analyses, including ratings, of S&P Global Ratings are opinions and not statements of fact or recommendations to purchase, hold, or sell securities. They do not address the suitability of any security, and should not be relied on in making any investment decision. S&P Global Ratings does not act as a fiduciary or an investment advisor except where registered as such.

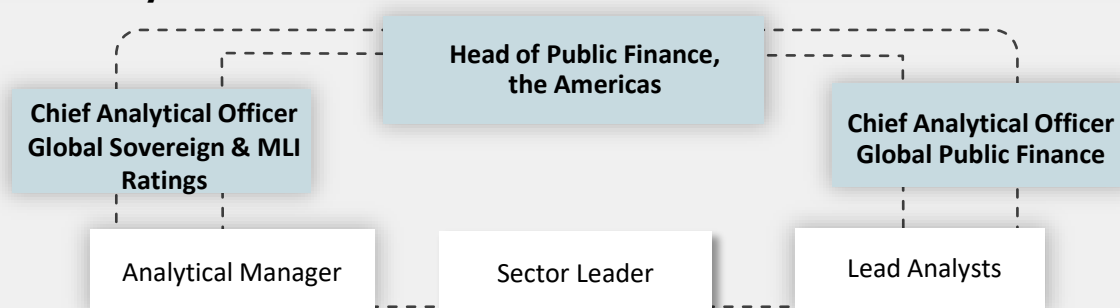
Copyright © 2025 by Standard & Poor's Financial Services LLC. All rights reserved.
STANDARD & POOR'S and S&P are registered trademarks of Standard & Poor's Financial Services LLC.

spglobal.com/ratings

Sovereign and International Public Finance

Our team has provided credit ratings, analyses, and market insights on sovereign and international public finance for decades. This team is comprised of analysts with extensive expertise in government and government-related sectors, including sovereigns, local and regional governments, transportation, housing, public sector funding agencies and multilateral lending institutions, health care, school boards, higher education, and pensions.

Interconnectivity of Our Team



Analytical Leaders



Analytical Manager

Daniela Brandazza
Managing Director
Toronto, ON
+1-437-833-0581
daniela.brandazza@spglobal.com



Head of Public Finance, the Americas

Matthew Reining
Managing Director
New York, NY
+1-212-438-3610
matthew.reining@spglobal.com



Sector Leader

Lisa Schineller
Managing Director
New York, NY
+1-212-438-7352
lisa.schineller@spglobal.com



Chief Analytical Officer Global Sovereign & MLI Ratings

Roberto Sifon-Arevalo
Managing Director
New York, NY
+1-646-467-4578
roberto.sifon-arevalo@spglobal.com



Sector Leader

Joydeep Mukherji
Managing Director
New York, NY
+1-212-438-7351
joydeep.mukherji@spglobal.com



Chief Analytical Officer

Nora Wittstruck
Managing Director
New York, NY
+1-212-438-8589
nora.wittstruck@spglobal.com

Sovereign and International Public Finance Lead Analytical Team



Lead Analyst

Bhavini Patel

Director
Toronto, ON
+1-416-507-2558
bhavini.patel@spglobal.com



Lead Analyst

Dina Shillis

Director
Toronto, ON
+1-416-507-3214
dina.shillis@spglobal.com



Lead Analyst

Julia Smith

Director
Toronto, ON
+1-416-507-3236
julia.smith@spglobal.com



Adam Gillespie

Director
Toronto, ON
+1-416-507-2565
adam.gillespie@spglobal.com



Lead Analyst

Constanza Perez Aquino

Director
Buenos Aires, Argentina
+54 11 4891 2167
constanza.perez.aquino@spglobal.com



Lead Analyst

Manuel Orozco

Director
Mexico City, Mexico
+52 55 5081 2872
manuel.orozco@spglobal.com



Alexis Smith-Juvelis

Director
Florida
+1-212-438-0639
alexis.smith-juvelis@spglobal.com

Market & Investor Outreach



John Piecuch

Managing Director
New York, NY
+1-212-438-1579
john.piecuch@spglobal.com

Visit spglobal.com/uspublicfinance to learn more about our work and see what we're thinking now.

The analyses, including ratings, of S&P Global Ratings are opinions and not statements of fact or recommendations to purchase, hold, or sell securities. They do not address the suitability of any security, and should not be relied on in making any investment decision. S&P Global Ratings does not act as a fiduciary or an investment advisor except where registered as such.

Copyright © 2025 by Standard & Poor's Financial Services LLC. All rights reserved.
STANDARD & POOR'S and S&P are registered trademarks of Standard & Poor's Financial Services LLC.

spglobal.com/ratings

Analytical Team

Carolina Caballero

Associate Director
Buenos Aires
+54 11 4891 2118
carolina.caballero@spglobal.com

Elisa Lopez Cortes

Senior Analyst
Toronto, ON
+1-416-507-2574
elisa.lopez.cortes@spglobal.com

Victor Santana

Senior Analyst
São Paulo, Brazil
+55 11 3039 4831
victor.santana@spglobal.com

Hector Cedano

Associate Director
Toronto, ON
+1-416-507-2536
hector.cedano@spglobal.com

Louis Favreau

Senior Analyst
Toronto, ON
+1-416-507-2562
louis.favreau@spglobal.com

Constanza Chamas

Rating Analyst
Mexico City
+52 55 1037 5256
c.chamas@spglobal.com

Jennifer Love

Associate Director
Toronto, ON
+1-416-507-3285
jennifer.love@spglobal.com

Amanpreet Kaur

Senior Analyst
Toronto, ON
+1-437-771-7950
amanpreet.kaur@spglobal.com

Nicole Schmidt

Ratings Analyst
Mexico City, Mexico
+52 55 5081 4451
nicole.schmidt@spglobal.com

Patricio Vimberg

Associate Director
Mexico City, Mexico
+52 55 1037 5288
patricio.vimberg@spglobal.com

Adam Paunic

Senior Analyst
Toronto, ON
+1-647-480-3543
adam.paunic@spglobal.com

Victor Dragonov

Research Assistant
São Paulo, Brazil
+55
victor.dragonov@spglobal.com

Market & Investor Outreach



John Piecuch

Managing Director
New York, NY
+1-212-438-1579
john.piecuch@spglobal.com

Visit spglobal.com/uspublicfinance to learn more about our work and see what we're thinking now.

The analyses, including ratings, of S&P Global Ratings are opinions and not statements of fact or recommendations to purchase, hold, or sell securities. They do not address the suitability of any security, and should not be relied on in making any investment decision. S&P Global Ratings does not act as a fiduciary or an investment advisor except where registered as such.

Copyright © 2025 by Standard & Poor's Financial Services LLC. All rights reserved.
STANDARD & POOR'S and S&P are registered trademarks of Standard & Poor's Financial Services LLC.

spglobal.com/ratings

S&P Global Ratings

One Financial Center
675 Atlantic Avenue, Suite 900
Boston, MA 00211

130 East Randolph Street, Suite 3600
Chicago, IL 60601

55 Water Street, 41st Floor
New York, NY 10041

Bay Adelaide Centre East Tower, 22
Adelaide Street West, 40th Floor, Toronto,
Ontario | Canada, M5H 4E3

Calle Javier Barros Sierra 540,
Venustiano Carranza, Mexico City |
Mexico, 15670

15 Inverness Way, East
Englewood, CO 80112

5430 LBJ Freeway, Suite 800
Dallas, TX 75240

333 Bush Street, 4th Floor, Suite 430
San Francisco, CA 94104

Buenos Aires
Avenida Leandro N. Alem 815,
Argentina, C1001

Av Brigadeiro Faria Lima 201,
Pinheiros, São Paulo - São Paulo,
Brazil, 05426-100

Visit spglobal.com/uspublicfinance to learn more about our
work and see what we're thinking now.

Copyright © 2025 by Standard & Poor's Financial Services LLC. All rights reserved.

No content (including ratings, credit-related analyses and data, valuations, model, software or other application or output therefrom) or any part thereof (Content) may be modified, reverse engineered, reproduced or distributed in any form by any means, or stored in a database or retrieval system, without the prior written permission of Standard & Poor's Financial Services LLC or its affiliates (collectively, S&P). The Content shall not be used for any unlawful or unauthorized purposes. S&P and any third-party providers, as well as their directors, officers, shareholders, employees or agents (collectively S&P Parties) do not guarantee the accuracy, completeness, timeliness or availability of the Content. S&P Parties are not responsible for any errors or omissions (negligent or otherwise), regardless of the cause, for the results obtained from the use of the Content, or for the security or maintenance of any data input by the user. The Content is provided on an "as is" basis. S&P PARTIES DISCLAIM ANY AND ALL EXPRESS OR IMPLIED WARRANTIES, INCLUDING, BUT NOT LIMITED TO, ANY WARRANTIES OF MERCHANTABILITY OR FITNESS

FOR A PARTICULAR PURPOSE OR USE, FREEDOM FROM BUGS, SOFTWARE ERRORS OR DEFECTS, THAT THE CONTENT'S FUNCTIONING WILL BE UNINTERRUPTED, OR THAT THE CONTENT WILL OPERATE WITH ANY SOFTWARE OR HARDWARE CONFIGURATION. In no event shall S&P Parties be liable to any party for any direct, indirect, incidental, exemplary, compensatory, punitive, special or consequential damages, costs, expenses, legal fees, or losses (including, without limitation, lost income or lost profits and opportunity costs or losses caused by negligence) in connection with any use of the Content even if advised of the possibility of such damages.

Credit-related and other analyses, including ratings, and statements in the Content are statements of opinion as of the date they are expressed and not statements of fact. S&P's opinions, analyses, and rating acknowledgment decisions (described below) are not recommendations to purchase, hold, or sell any securities or to make any investment decisions, and do not address the suitability of any security. S&P assumes no obligation to update the Content following publication in any form or format. The Content should not be relied on and is not a substitute for the skill, judgment and experience of the user, its management, employees, advisors and/or clients when making investment and other business decisions. S&P does not act as a fiduciary or an investment advisor except where registered as such. While S&P has obtained information from sources it believes to be reliable, S&P does not perform an audit and undertakes no duty of due diligence or independent verification of any information it receives. Rating-related publications may be published for a variety of reasons that are not necessarily dependent on action by rating committees, including, but not limited to, the publication of a periodic update on a credit rating and related analyses.

To the extent that regulatory authorities allow a rating agency to acknowledge in one jurisdiction a rating issued in another jurisdiction for certain regulatory purposes, S&P reserves the right to assign, withdraw, or suspend such acknowledgement at any time and in its sole discretion. S&P Parties disclaim any duty whatsoever arising out of the assignment, withdrawal, or suspension of an acknowledgment as well as any liability for any damage alleged to have been suffered on account thereof.

S&P keeps certain activities of its business units separate from each other in order to preserve the independence and objectivity of their respective activities. As a result, certain business units of S&P may have information that is not available to other S&P business units. S&P has established policies and procedures to maintain the confidentiality of certain nonpublic information received in connection with each analytical process.

S&P may receive compensation for its ratings and certain analyses, normally from issuers or underwriters of securities or from obligors. S&P reserves the right to disseminate its opinions and analyses. S&P's public ratings and analyses are made available on its Web sites, www.standardandpoors.com (free of charge), and www.spcapitaliq.com (subscription) and may be distributed through other means, including via S&P publications and third-party redistributors. Additional information about our ratings fees is available at www.standardandpoors.com/usratingsfees.

Australia: S&P Global Ratings Australia Pty Ltd holds Australian financial services license number 337565 under the Corporations Act 2001. S&P Global Ratings' credit ratings and related research are not intended for and must not be distributed to any person in Australia other than a wholesale client (as defined in Chapter 7 of the Corporations Act). STANDARD & POOR'S, S&P and RATINGSDIRECT are registered trademarks of Standard & Poor's Financial Services LLC.