

# Near Term Analysis

Core Platform



## Near- Term Written Analysis

Crude Oil Prices

Crude Oil Statistical Data

Crude Price Risk

Heating and Cooling Degree Days

## All Oil Spotlights

Market Updates

Title	Date
Daily Update on the War with Iran	03/27/202...
Near-Term Refinery Outages: Middle East disruptions drive outages higher	03/21/202...
Near-Term Refinery Outages: Middle East Conflict Drives Global Refinery O	03/14/202...
Near-Term Refinery Outages: Refinery disruptions increase as operators try	03/07/202...
Near-Term Refinery Outages: Global Refinery Outages Ease as Major Facilit	02/21/202...
Near-Term Refinery Outages: Spring Maintenance Drives Global Refinery O	02/14/202...
Near-Term Refinery Outages: Global refinery outages ease further in Febru:	02/07/202...
Global NGL Market Short-Term Outlook: February 2026 highlights	02/05/202...
Near-Term Refinery Outages: Global refinery outages near typical late-Janu	01/24/202...
Near-Term Refinery Outages: Global refinery outages slightly ease in mid-J	01/17/2026...
Near-Term Refinery Outages: Global outages will trend higher into mid-Jan	01/10/202...
Global NGL Market Short-Term Outlook: January 2026 highlights	01/07/202...

Columns

## "First Take" Analysis

Title	D
Daily Update on the War	04/...
Daily Update on the War	04/...
Daily Update on the War	03/...
Daily Update on the War	03/...
Daily Update on the War	03/...
FIRST TAKE: Trump's Irai	03/...

Columns



EN



## INTRODUCTION

Regional hostilities on March 30–31, 2026, have intensified refinery outages, shipping constraints, and short-term supply risks across the Middle East. Kuwait's 466,000-b/d Mina Al-Ahmadi and 454,000-b/d Mina Abdullah refineries remain largely halted, while Bahrain's 380,000-b/d complex is under force majeure. On March 31, a Kuwaiti VLCC was attacked off Dubai, and the Strait of Hormuz remains effectively closed to most commercial traffic, stalling more than 200 loaded tankers carrying an estimated 125 million barrels. The Bab al-Mandab Strait also faces potential

# » Near-Term

Open In Workspace

Near-Term Written Analysis

Crude Oil Prices

Crude Oil Statistical Data

Crude Price Risk

Heating and Cooling Degree Days

Crude Prices

Crude Spreads

Crude Differentials-Atlantic Sweet

Crude Diffs - Sours

Refinery Margins

Chart Data

AAQBF00



D



Indicators



Chart\_kfvfuf



AAQBF00 · Americas Dated Brent · 1D	140.64
PCACG00, WTI Cushing Mo01	111.54
AAYRG00, WTI MEH	119.29
PCABN00, LLS St James Mo01	118.19
PCAAT00, Dubai Mo01 (NextGen MOC)	120.2



# » Near-Term

Open In Workspace

Near-Term Written Analysis   **Crude Oil Prices**   Crude Oil Statistical Data   Crude Price Risk   Heating and Cooling Degree Days

Crude Prices   **Crude Spreads**   Crude Differentials-Atlantic Sweet   Crude Diffs - Sours   Refinery Margins

Chart   Data

AAQBF00   D   Indicators   Chart\_o73ssy



# » Near-Term

Open In Workspace   

Near-Term Written Analysis   **Refined Products Prices**   NGL and LPG Prices and Arbs   NGL Energy Basis, \$/MMBtu   Northeast Asia (NEA) ethylene feedst 

**Product Prices**   Gasoline - Diesel   Diesel - HSFO   Jet - Diesel

Chart   Data

AGWB00  D   Indicators         Chart\_3w3sgi 



# » Near-Term

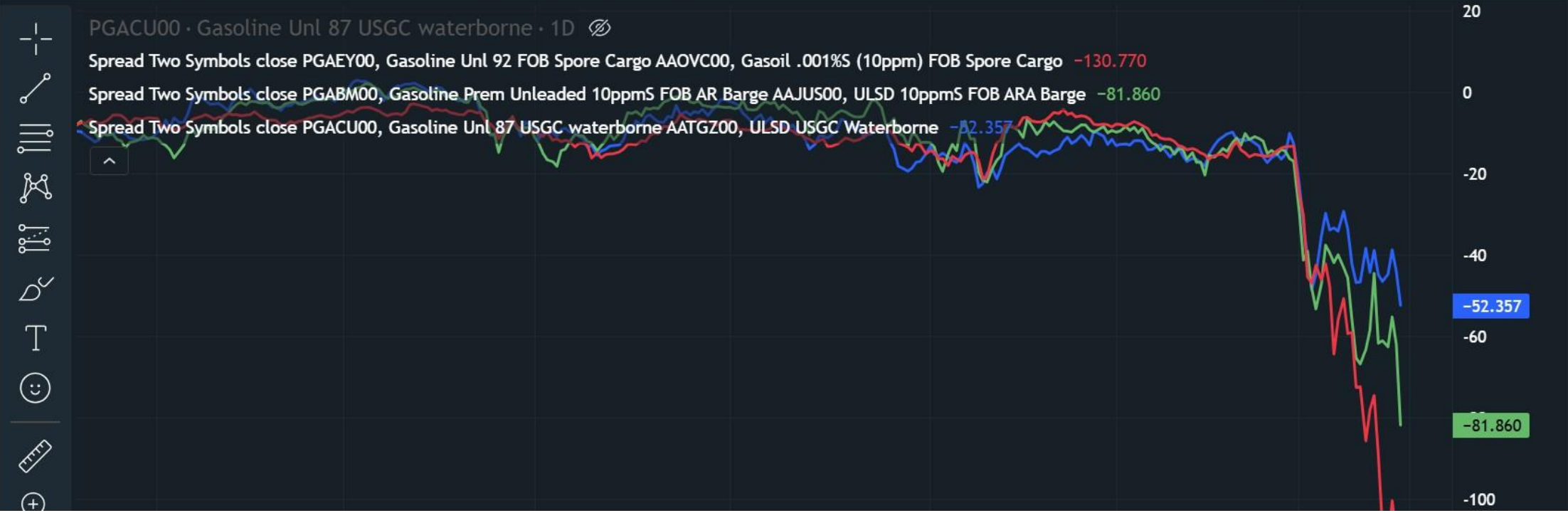
Open In Workspace

Near-Term Written Analysis   **Refined Products Prices**   NGL and LPG Prices and Arbs   NGL Energy Basis, \$/MMBtu   Northeast Asia (NEA) ethylene feedst

Product Prices   **Gasoline - Diesel**   Diesel - HSFO   Jet - Diesel

Chart   Data

PGACU00   D   Indicators   Chart\_96qtzp



LNG

# Price Forecast

Price Forecast



Transpose Grid



☰ Drag here to set row groups

	☰ In-TFDE	☰ forward	☰ ES NWE	☰ GCM	☰ Henry Hub	☰ NG-JKM	☰ East India	☰ Netback	☰ Light A
<b>Chart</b>	<input type="checkbox"/>	<input type="checkbox"/>	<input type="checkbox"/>	<input type="checkbox"/>	<input type="checkbox"/>	<input type="checkbox"/>	<input type="checkbox"/>	<input type="checkbox"/>	<input type="checkbox"/>
<b>Underlying</b>	AASYC00	LEBMH01	AASXU00	LGCSM01	IGBBL21	AAOVQ00	AARXS00	AARX00	
<b>Region</b>	Atlantic Basin	-	North West E...	-	Henry Hub	Asia	West Coast In...	Australia	Malaysia
<b>Group</b>	Freight Rates	Atlantic Basin	Atlantic Basin	Atlantic Basin	Atlantic Basin	Asia	Asia	Asia	Asia
<b>Currency</b>	USD	USD	USD	USD	USD	USD	USD	USD	USD
<b>UOM</b>	day	MMBtu	MMBtu	MMBtu	MMBtu	MMBtu	MMBtu	MMBtu	MMBtu
<b>As of</b>	06 Mar 2026	02 Apr 2026	01 Apr 2026	02 Apr 2026	20 Mar 2026	01 Apr 2026	01 Apr 2026	01 Apr 2026	01 Apr 2026
<b>Jan-2026</b>	23,516.13	6.5	9.3	10.36	7.76	10.66	10.17	9.85	
<b>Feb-2026</b>	14,107.14	5.94	9.27	9.78	3.84	9.61	9.36	9.04	

Columns