

Platts Market Data

www.platts.com

Platts™ *Excel*® Add-In installation guide

April 2018



Applies to Version 4.0.0.0

Table of contents

Introduction	3
Prerequisites.....	3
Installation.....	4
Signing in.....	5
Uninstalling.....	6
Troubleshooting.....	6
Silent Installation	7

Introduction

Platts intuitive Excel Add-In functionality gives our clients the ability to access and interpret Platts Assessment Data and eWindow Market Data with ease.

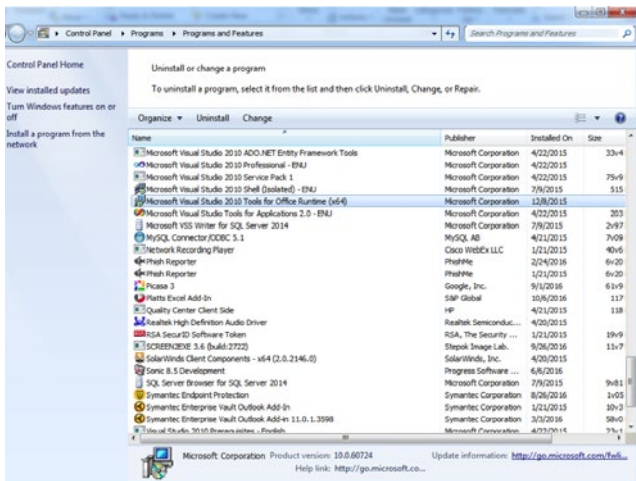
This document provides users with a simple step-by-step guide to installing the Platts™ Excel® Add-In.

Prerequisites

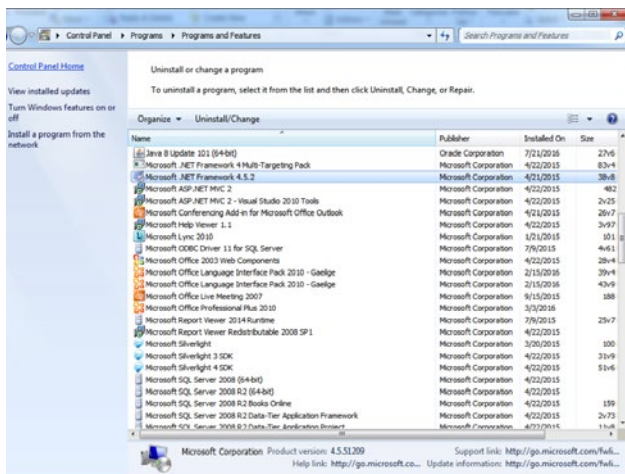
Windows Versions: Windows 7, Windows 8 and Windows 10.

Microsoft Excel Versions: 2010, 2013 and 2016 (both 32 bit and 64 bit are supported).

Office Runtime (VSTO) with Microsoft Visual Studio 20xx Tools installed (administrator rights and a build version higher than 10.0.50903 required). This can be checked via the Windows Control Panel.



- Microsoft .Net framework 4.5.2 or greater. This can be checked via the Windows Control Panel.



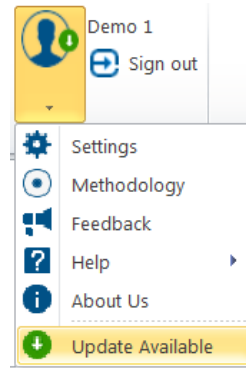
- An active internet broadband connection with a bandwidth of at least 5 mbps.

- The user performing the installation will need Administrator privileges.

Installation

1. Go to www.platts.com/software-user-manuals to download the installation Zip file.

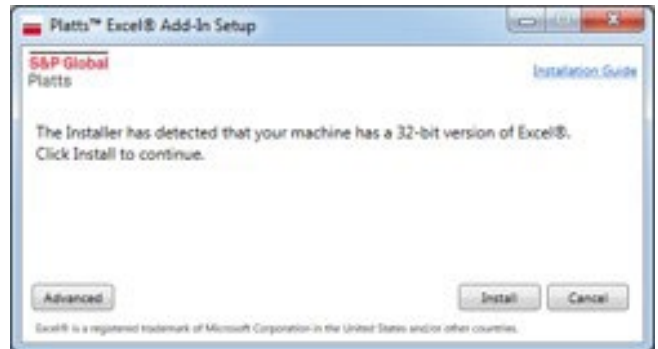
Note: If you have version 3.0.6.0 or above, you can download the latest version of the Add-In using the Update Available option in the User Profile dropdown.



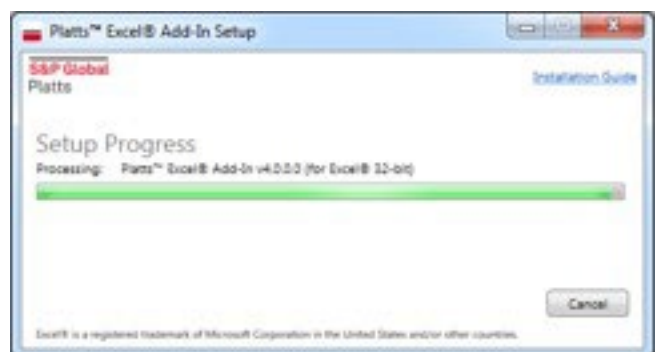
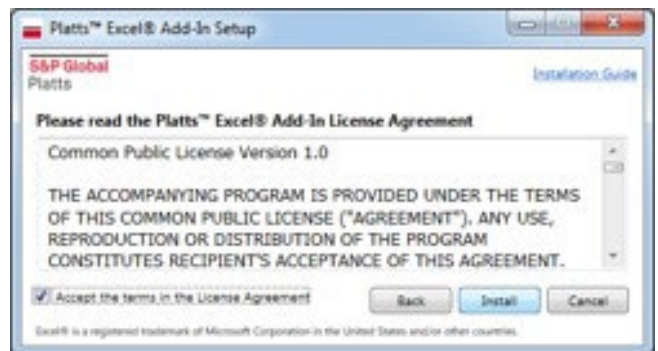
2. Extract the Zip file “platts-excel-add-in-vX.X.X.X”

3. Run the installer “Platts Excel Add-In vX.X.X.X.exe” From Platts™ Excel® Add-In version 4.0.0.0 onwards, the installer automatically detects and installs the correct version according to the Excel bitness on your machine.

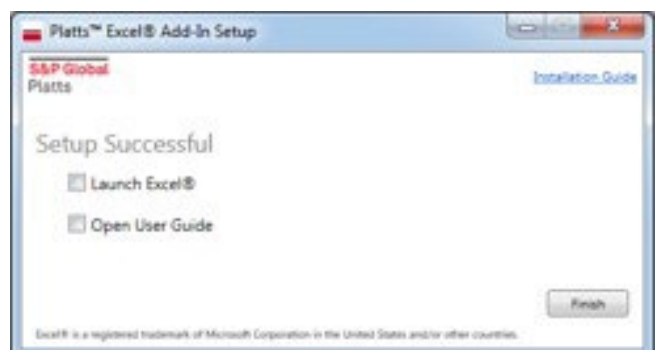
4. Click ‘Install’



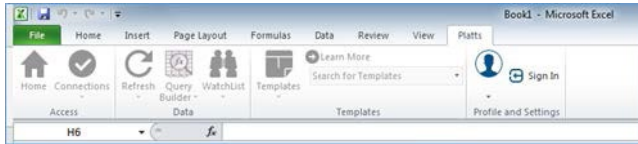
5. After reading the Platts™ Excel® Add-In License Agreement, accept the terms by selecting the checkbox and click ‘Install’.



6. After the installation is complete, you now have the option of Launching Excel, or opening our User Guide



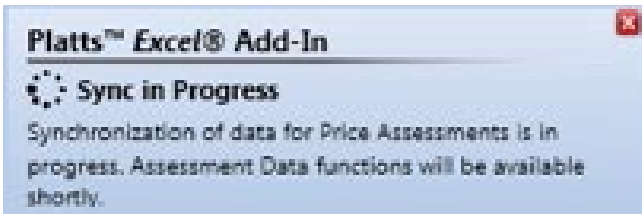
Signing in



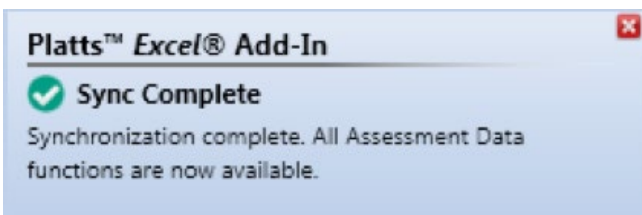
1. Open Excel.
2. Select the new ribbon bar entry called 'Platts' in Excel.
3. Click 'Sign in'



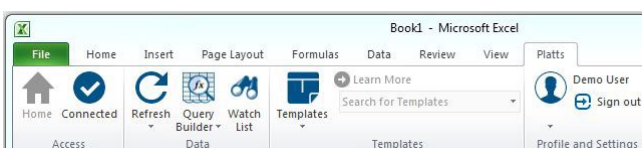
4. Enter your registered email address and password and click 'Sign in'.



5. The first time you Sign in, the Add-In may take a few seconds to initialize along with a message on the lower right corner of your screen.



6. Once the initialization is complete, the below message is displayed.



7. After all Connections are established, the Ribbon bar is enabled, and the Add-In is now ready for use

Uninstalling

If a previous version of the Excel Add-In has already been installed, you can uninstall the previous version of the Platts Excel Add-In by following these simple steps:

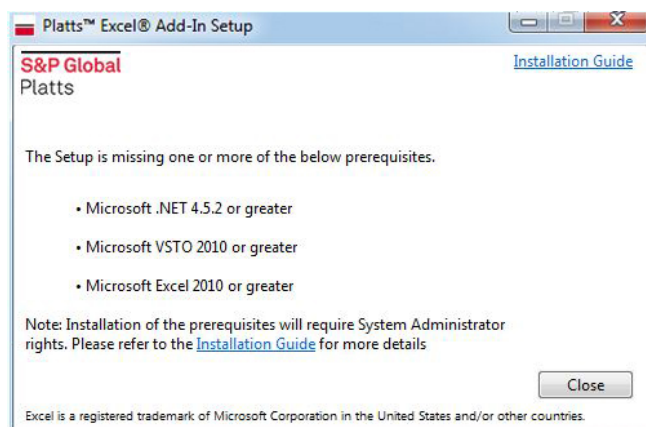
1. Open the 'Windows Control Panel' and select 'Programs and Features'
2. Select 'Platts Market Data Direct' or Platts™ Excel® Add-In and click 'Uninstall.'
3. Then click 'Close.'

Troubleshooting

Issue

Action to be taken

Prerequisites not Installed.

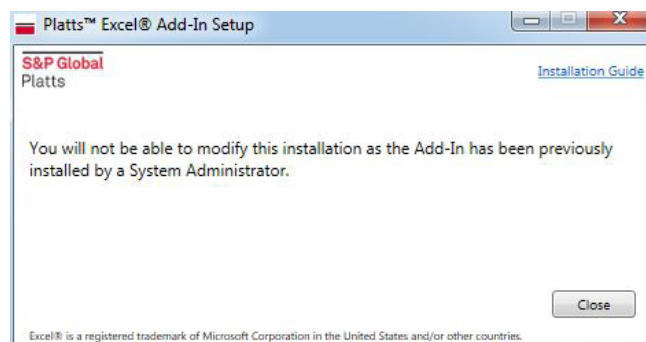


Ensure all prerequisites are installed on the machine.

In case one or more of these prerequisites are missing, please download and install them from the Microsoft website.

Note: Microsoft Excel 2007 is not supported with version 4.0.0.0 and above.

Unable to install due to previously installed version by a System Administrator.



If a version has been previously installed by a System Administrator, uninstallation of the Add-In will be required by a System Administrator before a Standard user can proceed with the installation.

Silent Installation

Silent Installation is a convenient way to streamline the installation process of the Platts Excel Add-In to a User Group. You can use the below commands to perform the silent installation on a machine.

Note: These commands must be performed by a System Administrator only.

Command	Usage
<code>"Platts Excel Add-In vX.X.X.X.exe" /passive PerMachine=1 SilentInstall=YES</code>	Installs the Add-In for all users on the Machine
<code>"Platts Excel Add-In vX.X.X.X.exe" /passive PerMachine=0 SilentInstall=YES</code>	Installs the Add-In for the current User only
<code>"Platts Excel Add-In vX.X.X.X.exe" /passive /uninstall</code>	Uninstalls the Add-In from the Machine.

For more information, please contact the Platts office nearest you:

North America

New York

2 Penn Plaza, 25th Floor
New York, NY 10121-2298, USA
P: +1-800-PLATTS8 (toll-free)
P: +1-212-904-3070 (direct)

Boston

225 Franklin Street, 14th Floor
Boston, MA 02110 USA
P: +1 800-752-8878
P: +1 617-530-8300

Denver

1800 Larimer Street, Suite 2000
Denver, CO 80202, USA
P: +1-720-264-6600

Hightstown

148 Princeton-Hightstown Road
Hightstown, NJ 80021, USA
P: +1-800-PLATTS8 (toll-free)

Houston

Heritage Plaza
1111 Bagby Street, Suite 2200
Houston, TX 77002, USA
P: +1-800-PLATTS8 (toll-free)

Pittsburgh

424 South 27th Street, Suite 306
Pittsburgh, PA 15203, USA
P: +1-412-431-4370

Washington, D.C.

1200 G Street NW, Suite 1000
Washington, DC 20005, USA
P: +1-212-904-3070

Latin America

Buenos Aires

Tte. Gral. Juan D. Perón 346, 6th
Floor
(C1038AAH) Buenos Aires, Argentina
P: +54-11-4121-4810

São Paulo

Av Brigadeiro Faria Lima
201 21st floor
São Paulo – SP Brasil – 05626-100
Brazil
P: +55-11-3818-4100

Europe, Middle East and Africa

London

20 Canada Square
12th Floor, Canary Wharf
London E14 5LH, UK
P: +44-20-7176-6111

Dubai

DIFC, The Gate Precinct
Building 1, Level 05
P.O. Box 506650
Dubai, UAE
P: +971-4-372-7100

Moscow

Business Center
Mokhovaya
4/7 Vozdvizhenka Street
Building 2, 7th Floor, 125009
Moscow, Russia
P: +7-495-783-4141

Stavanger

Øvre Holmegate 1
4006 Stavanger
Norway
P: +47-51-89-06-66

Asia-Pacific

Singapore

12 Marina Boulevard
#23-01 Marina Bay
Financial Centre Tower 3
Singapore 018982
P: +65-6532-2800

Beijing

Suite 1601, 16/F Tower D
Beijing CITC
A6 Jianguo Menwai Avenue
Chaoyang District
Beijing 100022, China
P: +86-10-6569-2929

Hong Kong

Unit 6901, Level 69
International Commerce Centre
1 Austin Road West
Kowloon, Hong Kong
P: +852-2841-1035

Shanghai

33/F Shanghai Plaza
138 Huaihai Road (M)
Shanghai 200021, China
P: +86-21-5110-5488

Tokyo

Marunouchi Kitaguchi
Building, 28th Floor
1-6-5 Marunouchi
Tokyo 100-0005, Japan
P: +81-3-4550-8300

Melbourne

Level 45, 120 Collins Street
Melbourne
VIC 3000, Australia
P: +61-3-9631-2000